

MARSMAN EXECUTIVES ON THE MOVE

The rapidly expanding activities of the Marsman organization are keeping the key men "on the go", as they supervise the various projects and make plans for new activities.

Mr. Marsman himself returned from London a short time ago. After leaving Manila he visited the Mangani Mine, and then flew from Medan, Northern Sumatra, to Amsterdam. He established contacts and concluded valuable business in Amsterdam and London before returning to Manila in time to spend the holiday season with his family.

G. B. Gifford Hull, consulting engineer of Marsman Hongkong China Limited, consulted with Mr. Marsman in London on engineering projects for the Hongkong Company.

Major A. Beckerleg is now on a business trip to Singapore and surrounding territory where he will investigate several placer properties under consideration by the organization. He will be joined by George W. Kerr, of the board of consulting engineers, and by T. S. Scrutton, consulting engineer for the Hollybush Trust Limited to London, who flew there directly from London.

Three of the Marsman executives have recently returned from abroad. Benj. S. Ohnick, vice-president of Marsman & Company, returned from a well-earned vacation to Seattle. J. O.

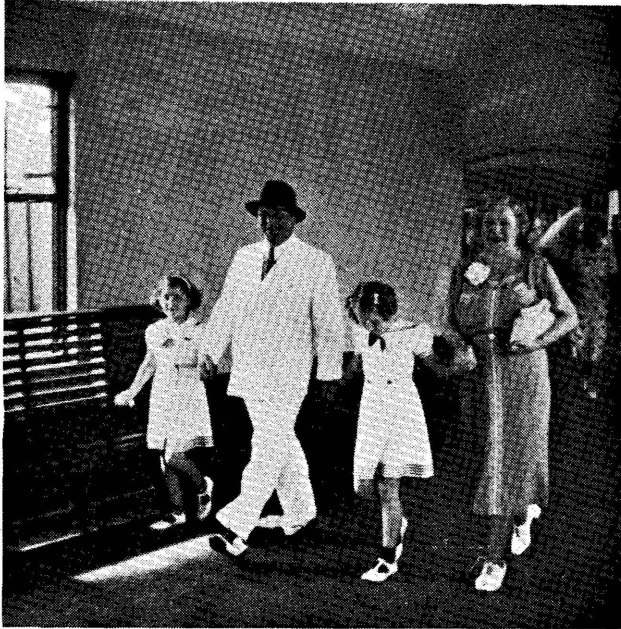
Enberg arrived from a combined business and pleasure trip to the Western United States, during which he examined some promising mining properties. R. W. Crosby of the mine consultation staff, also was in Western America on business and pleasure; during his trip he looked over mining operations in which the organization is interested.

Robert De Vos, managing director of Marsman Hongkong China, is now back in Hongkong after spending some time in London with Mr. Marsman, following which he went to the United States to follow up negotiations initiated by Mr. Marsman.

W. L. Carman, of the metals department of Marsman Hongkong China, has returned to Hongkong after a quick trip to the United States in connection with the metals business. He flew from Manila to San Francisco.

A. Prismall, travelling auditor, has returned to Manila after seven months with Marsman Hongkong China in Hongkong.

J. E. Atkinson, consulting engineer for the Mangani project, was recalled to Manila for consultation concerning that operation just before the New Year. He has returned to his post to supervise the further development of the Mangani mine.



When Mr. Marsman returned from London recently, he was met at Pier 7 by Mrs. Marsman, his daughter Anne Petronella, and his niece, Eileen Wedderburn.