

# CLETRAC - The Modern Dirt Mover

Everything you've ever wanted in a Farm Tractor—that sums up CLETRAC, the tractor manufactured by the Cleveland Tractor Company, of Cleveland, Ohio, and distributed in the Philippines by the Marsman Trading Corporation.

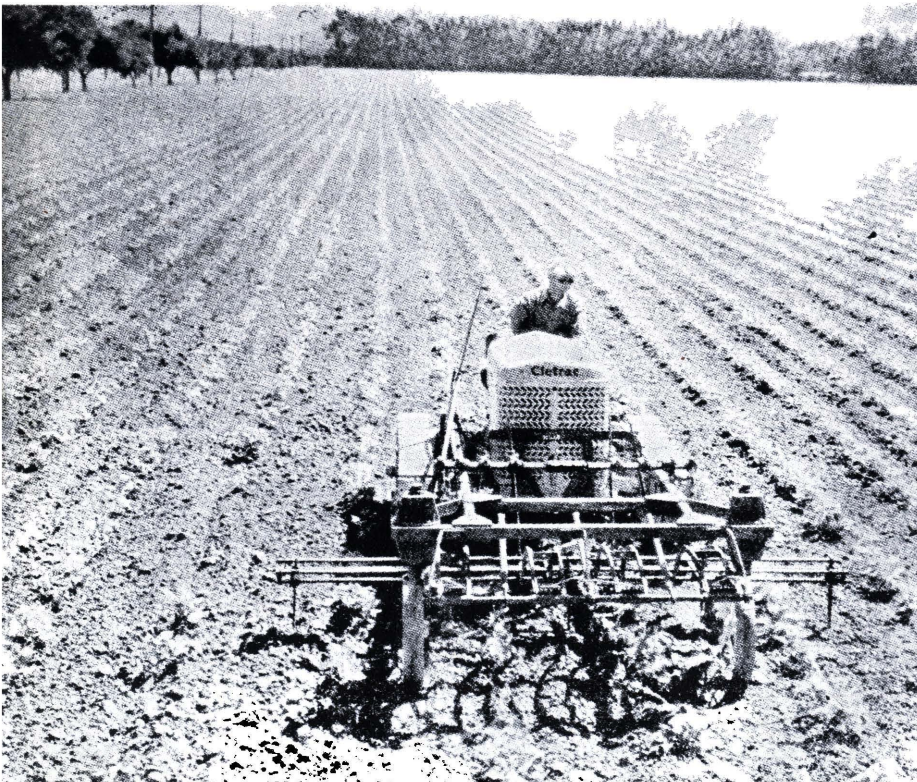
In mud, sand, clay, rock . . . hauling scrapers, bulldozing, trail building, handling elevating graders, blade grading, ripping . . . moving dirt more economically—that's the story of Cletrac the world over, as shown by the pictures on these pages.

With Cletrac's Controlled Differential Steering, an exclusive Cletrac feature, both tracks are pulling at all times, on the turns as well as on the

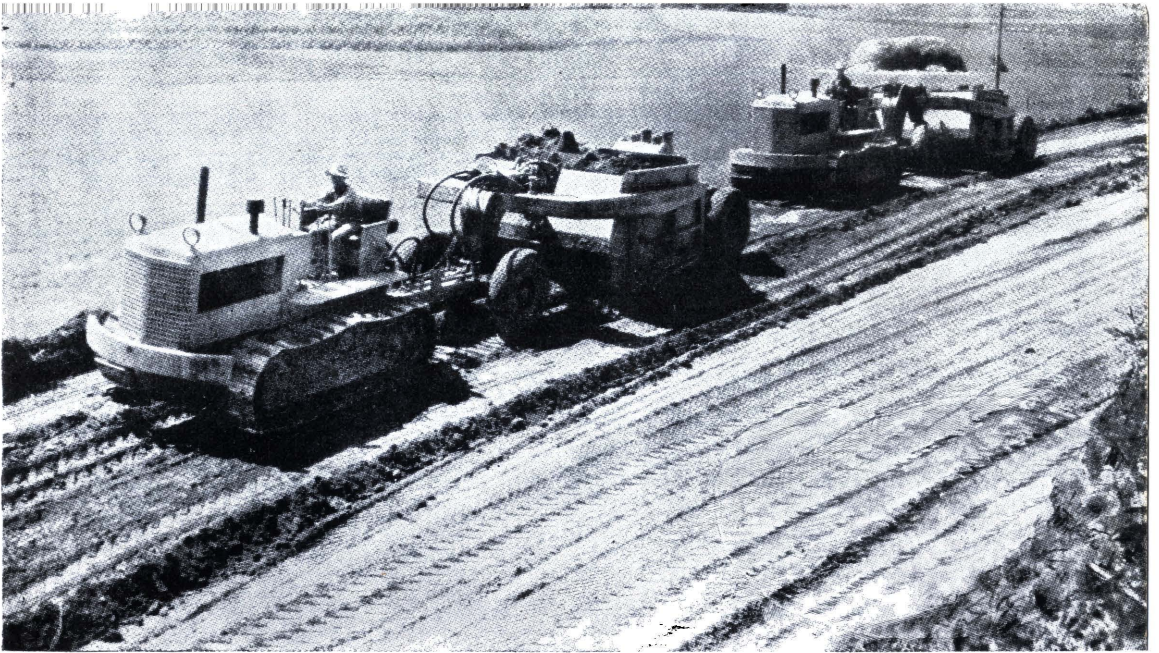
straightaway. The tractor turns around—not twists around—like a team of horses. You handle larger loads on the turns. Loads move forward more smoothly. Power is saved. Wear and tear on the tractor are minimized.

Furthermore, because of this feature, it is easier to balance the load against the tractor in bulldozing, backfilling, snow removal, ditching, and other off-center loads. You do a smoother, better job . . . and faster.

Balanced design, which combines lightness in weight with maximum traction, increases capacity on grades as much as 19 per cent on a 30 per cent grade. Again, Cletracs increase capa-



*Several Cletracs similar to that shown here will soon be in use on Negros sugar plantations.*



*Two Cletracs of the type shown above have been purchased by the Philippine Gov't. for use on the Agno River project, and will be in operation soon.*

city and cut costs.

And because of Cletrac's wonderful simplicity, Cletracs are easier and simpler to maintain. Steering bands can be adjusted in less than fifteen minutes, replaced in not much longer. Clutch can be adjusted in five minutes, replaced without disturbing either engine or transmission.

Greater speed . . . greater capacity . . . greater economy . . . greater dependability—all combine to make your first choice Cletrac.

Controlled Differential Steering is an exclusive Cletrac feature and has been in continuous use since 1916. It is the secret of Cletrac's remarkable ease of handling . . . positive control . . . and greater safety on hills and grades. With this form of steering there is no "de-clutching" or "braking." Instead the tractor turns in much the same way as a team of horses. On the turn the inside track slows down, in effect, drops into a lower gear. The out-

side track speeds up, steps into a higher gear. The result is that both tracks are under power at all times.

Cletracs roll around on a turn, not twist around. They roll over rocks, stumps, roots and other obstructions instead of twisting and sliding the tracks under and against the obstructions. Consequently, Cletracs consume less power in turning. There is more available to handle the load. Furthermore, because of this easier turning, there is less strain on the track side frames. This means longer life, less trouble, fewer shocks and strains, and less difficulty with track alignment.

Cletracs move gradually around the curve when turning instead of zig-zagging in a series of starts and stops. The result is a shorter turn. The shortness of a Cletrac turn is limited primarily by the drawn equipment.

Write or telephone Marsman Trading in Manila for a demonstration of Cletracs.