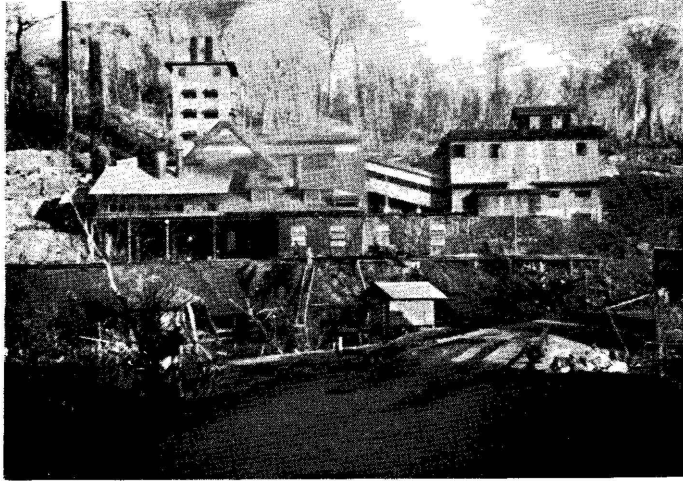


## PHILIPPINE SMELTING COMPANY TREATS CONCENTRATES AND ORES VALUED AT ₱900,000.00



*An excellent picture of the Philippine Smelting Company on the Mambulao Bay showing at the left the Cotrell Plant, the main smelter plant in the foreground, with the crushing, sampling and storage plant at the right.*

The Philippine Smelting Company had a record breaking month during March.

The smelter treated 2,189.5 tons of material, of which 1,546.2 tons were concentrates, 250 tons of limerock, 157.8 tons of siliceous ores, with the balance of the total smelter secondaries.

The output of the plant was 105.8 tons containing 10,699.8 ounces of gold,

23,860 ounces of silver, and 89,459 pounds of copper, with a total value of ₱900,000.00.

Joining the companies which ship concentrates to the smelter for further refining was the North Camarines Gold Mining Company.

To correct the overload on the transformers, a 105 KVA Capacitor was installed during March.

---

## DEVELOPMENT WORK ON MOUNTAIN MINES IS PROGRESSING

The development work by Marsman & Company on this property is progressing rapidly.

Work on the 28 drift north consisted of crosscutting to the west in the No. 1 crosscut, and to the east in the No. 2 crosscut. No. 1 crosscut was advanced during the month from 5 feet to 100 feet from the main drift.

The 28 drift north was advanced to a point 200 feet from the portal, and a crosscut to the east was started. This

crosscut was advanced 25 feet and is being driven to investigate a fault structure in the main drift.

On the south side of the Pasil River, opposite the camp site, a tunnel has been started. This tunnel was advanced during March approximately 10 feet, in average grade ore.

With weather conditions good, considerable trail work and prospecting in various localities were performed.