

Building Entrance, on Aviles

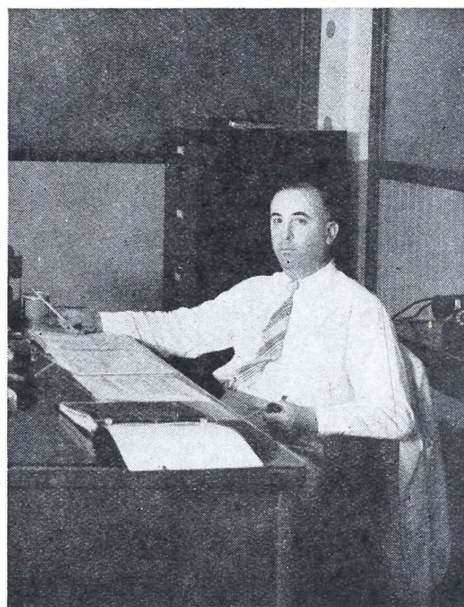
A newcomer in the field of mining activities in the Philippines is the Southwestern Engineering Company of P. I., Inc., but the mother Company of this local organization, the Southwestern Engineering Company at Los Angeles, California, is by no means new to the mining industry throughout the world. The Southwestern of Los Angeles has been active in serving mining enterprises the world over for the past twenty-one years, and has rendered valuable service to some of the largest of mining organizations. Southwestern's metallurgical and manufacturing departments at Los Angeles have contributed their services to such Companies as Beattie Gold Mines, Ltd., Quebec, Canada; Phelps Dodge Corporation, Arizona; American Smelting and Refining Company, U. S. A. and Mexico; Bethlehem Steel Corporation (Copper, Pyrite), Pennsylvania; The Karabash Combine (Copper, Zinc, Pyrite), U. S. S. R.; Nevada Consolidated; Roan Antelope, N. Rhodesia; St. Joseph Lead Company; and other prominent mining concerns.

Among the scores of ore milling plants engineered and constructed by Southwestern Engineering Company are such mills as that at the Black Hawk Consolidated Mining Company, New Mexico, a selective flotation plant job; Cia. Minera Agua Fria, Honduras, a combination cyanide-flotation plant; Santa Catalina Island Company's selective flotation plant, California; the flotation-cyanide plant, at Weepah Nevada Mining Company, Nevada; Christmas Copper Company's 400-ton flotation mill, Arizona; a 500-ton graphite ore mill at Burnet, Texas; and many other mills treating precious and base metal ores, and non-metallic minerals.

Since the year, 1916 the mother Company of the local Southwestern Engineering Company has, in its ore testing laboratory, tested ore samples from more than 2600 mines and mining properties for the purpose of determining the best suited treatment process to recommend to its clients. It has also contributed materially to the development of the Flotation Machine. During the past twenty-one years the Company, and individual members of its engineering staff, have assisted in pioneering work and made substantial contributions to the art of milling ores.

The Southwestern Engineering Company of P. I., Inc., was incorporated under the laws of the Philippines in the early part of this year (1937) and has been active in local mining circles since that time. They are at present constructing a 150-ton Lead-Zinc-Gold flotation plant for Mineral Resources, Inc., on Marinduque Island.

Their services to the Philippine mining industry includes laboratory ore testing; consulting metallurgical work at operating mills requiring same; ore milling plant design, either preliminary layouts or completely detailed drawings and specifications, as required; the supply of standard ore milling equipment; and the furnishing of completely erected ore milling plants on either fee basis, cost-plus basis, or at a turnkey contract price.



S. E. Stein, President and Gen. Mgr.

The Southwestern Engineering Company of P. I., Inc., have established their Head Office, Ore Testing Laboratory, Assay Office and Plant-Design Department in Manila at 506 Calle Aviles, San Miguel. Their staff consists of Metallurgical and Mechanical Engineers, Laboratory Technicians and Plant Construction Superintendents and Foremen, each member being thoroughly experienced for the performance of his duties.

Southwestern will in no way participate in the ownership of mining enterprises, nor will they undertake mine management or directing. Their purpose is to be of service, in the activities mentioned above, to independent mine owners and operators and to those Companies organized for the purpose of managing and directing mining enterprises.

The Southwestern Engineering Company's local staff boasts of many oldtimers in the mining field, whose long experience in their chosen work qualifies them to render the most efficient service to the Company they represent and to the Company's clients in the Philippines.

Mr. S. E. Stein, President and General Manager of this organization is a mining and metallurgical engineer. A graduate of the Alabama Polytechnic Institute (Auburn), class of 1913, he has devoted the past 24 years to the mining industry in the fields of mining, ore-milling, ore-testing and laboratory research, and has been variously identified with such Companies as Nevada Consolidated, Ray Consolidated, Utah Copper, Phelps Dodge, Allenby B. C., and has had headquarters under Southwestern Engineering Company at Los Angeles, New York City, Montreal and Toronto. In the latter Company (Southwestern) he started as Metallurgical Engineer and later became Manager of their mining department. He arrived in the Philippines during the latter part of 1936 to organize and establish the Southwestern Engineering Company of P. I., Inc. He holds a license as Mining Engineer in the Philippines.

Luther Kirtley, Metallurgical Engineer and Chief in charge of laboratories, is a graduate of the University of Chicago and the Columbia School of Mines. During more than 25 years in the business he has served in the employ of such Companies as the U. S. Smelting and Refining Company, Nevada Consolidated, Utah-Apex, Dorr Company, Replogle Steel and San Francisco Del Oro.

John Bendel, Chief Designer and Mechanical Engineer, has been designing mills and smelters for the past 25 years for mining Companies in both North and South America. Mr. Bendel is one of the widest known engineers in his especial field. He was one of the well known group (Bendel, Maag, Collins and Ruth) who staffed the designing departments of the firm Bradley, Bruff and Le Barthe in the early 1900's. For several years Mr. Bendel was in full charge of designing (including several complete large plants) for Cerro de Pasco both in Peru and New York City.

William J. Towne, Office Manager, arrived in Manila early this year (1937) and is experienced in general business purchasing, merchandising, and traffic management. He has also had considerable experience in trans-Pacific import and export trade and management.

(Please turn to page 28)

equipment man, and is Far Eastern head of Mine Safety Appliances Co.

HAUSSERMANN: Benguet Consolidated made a new monthly record during October, with 31,852 tons of ore milled, and a production of P897,918.00. Balatoc turned out 37,884 tons with a value of P1,067,510.08; Cal Horr, 6,693 tons valued at P135,234.22, and Ipo milled 6,023 tons worth P51,696.23.

Judge Haussermann told the JOURNAL he expects to win the important Balatoc patent case now pending in the courts for decision. We summarized the points at issue in this case in our last number. The Judge said there is a case decided in 1935 by the Supreme Court of the United States, involving identical points as are involved in the Balatoc case. The 1935 case involved an oil-prospecting location on which assessment work had been allowed to lapse. While the assessment work had lapsed, Congress withdrew the land from further exploration. The United States Supreme Court held in that case that the private complainants were entitled to a patent from the government upon completing their assessment work and other requirements under the law at the time they located the property.

This case is directly in point should the Balatoc case reach Washington for final decision, the Judge said.

R. M. Overbeck, a consulting engineer of wide experience, has joined the staff of Benguet Consolidated Mining Company as consulting geologist for the Benguet interests.

SORIANO: Stockholders of the North Camarines Gold Mining Company voted to increase the capitalization of the company from P500,000.00 to P1,000,000.00 at the annual meeting of the company held on November 9. This company is one of the Soriano group, under the management of the International Engineering Corporation, the Soriano technical company.

This company has 82 "new style" lode claims and fractions in Paracale, adjacent to the properties of Paracale Gold, Coco Grove and United Paracale. The International Engineering Corporation has an option on P400,000.00 worth of the unissued stock of the company, at par. Development began in October, 1936, with Drexel

Spaulding, formerly of the Antamok Gold-fields staff, as resident engineer, and H. Lindbloom, formerly of Masbate Consolidated, as consulting geologist.

Capital development up to September of this year amounted to 5,107 feet. A diamond drilling program accounted for 3,223 feet more.

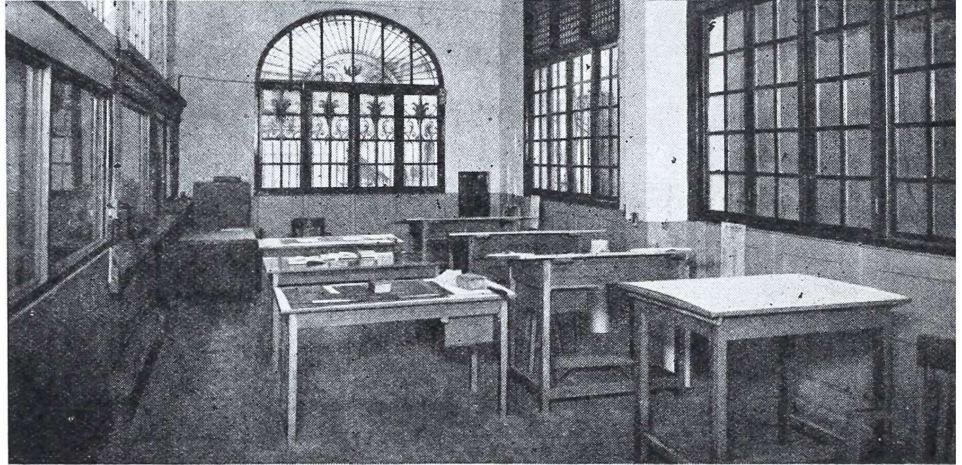
Soriano offices announced that the work during the latter part of this period has definitely indicated that the property will become a gold producer during 1938. Permanent equipment to complete the blocking-out program in preparation for a mill has been completed, and a moderate building program has been finished. Ore samples are being taken in duplicate for mill tests and gow sheet design.

I. X. L. produced P204,578.17 from 6,771 tons treated in October. This is slightly under the all-time high, but Soriano officials are satisfied, as the extraction at the mill averaged 96.5 per cent—the best I. X. L. has ever done.

Antamok, one of the Islands' biggest consistent producers, turned in P455,232.57 from 23,903 tons of ore during October.

Andres Soriano, the chief of the Soriano interests, which include the San Miguel Brewery, his mining companies, a brewery in Kansas City, Mo., the Insular Cold Stores here in Manila, and many other commercial enterprises, is on an extended trip abroad.

EAST MINDANAO: A new producer, this company extracted P43,200 of ore from 3,228 tons in October.



Mine Mill, and Power Plant Design, Southwestern Engineering Co. P. I., Inc.

A Modern...

(Continued from page 19)

Roy A. Smith, Field Superintendent in charge of construction, has had more than 25 years direct construction experience in building mills, industrial plants, roads and bridges in North America.

Morris C. Scherer, field Metallurgist, graduated from the College of Mines and Metallurgy, University of Texas (1925). He has had mining and ore-milling experience variously at The Mexican Corporation, Fresnillo; Cia. Minera de Perroles; Nevada Consolidated; Chelan Copper Mining Company; Boriana Tungsten Mine; Ray Southern Mine, Arizona; various mills in California and others.

Teofilo Soriano, Mechanical Engineer, is connected with the plant design department. Mr. Soriano is one of our local University men, having graduated from the University of the Philippines. He is experienced in mechanical construction work, plant layouts, and industrial electrical installations.

Miss Isabel M. L. Stangl, assayer, graduated in chemistry from Silliman University in 1931. She was employed at the Binalbagan Sugar Central, Negros, Occidental, for two years. In 1935, she was assistant, in charge of the assay laboratory of the Central Philippine College at Jaro, Iloilo, and in 1936-37 assayer at the laboratory of Silliman University, in connection with the new College of Mines.

Additional Engineers will arrive in the Philippines later in the year and, other members of the staff, such as Assayers, Draftsmen, Field Construction Supervisors and Foremen, are being recruited locally as far as possible. The staff will be increased from time to time as required with a personnel of similar experienced technical calibre, and it is the intention of the management to operate a highgrade engineering service with the hope of making such a service desirable in the minds of informed persons in the field of mining in the Philippines.

Amalgamated Minerals, Inc.

118 T. PINPIN, MANILA

Telegraphic Address—"AMALGAMATED"

OPERATORS AND ADMINISTRATORS OF MINES

Specializing in Base Metals

COMPLETE STAFF
of
ENGINEERS and
GEOLOGISTS

REPRESENTING
LEADING SMELTERS and
BUYERS THROUGHOUT
THE WORLD

Buyers and Exporters of Copper, Manganese,
Chromite and Other Base Metals

Consultation Invited

No Problem is too Difficult. We Operate Ships Under Special Charter