

THE Luneta is more than a historic park. It is a revelation of the Filipino. The Luneta mirrors his desire to improve his environment, his passion for beauty and his capacity for discipline.

The Luneta was once a mish-mash of unimaginative landscaping and grotesque structures. The untrimmed shrubs bloomed for lovers; ugly iron bars protruded from the sides of the grandstand for years; a garish obelisk towered over the Rizal monument at one time. What sustained the Park was the people's innate fondness for it, and its own unique history, the spirit of the old Bagumbayan.

The Luneta started enjoying the care it deserved in 1966 when Mrs. Imelda R. Marcos, in the initial thrust of her national beautification and cultural program, turned her attention to the restoration and improvement of national parks, historical shrines and cultural relics.

The Luneta of our affection was one of the early beneficiaries of her care. The Rizal Park Development was organized. Columnist Teodoro F. Valencia performed a key role in the Park's development. In addition to raising funds for Luneta, Valencia overseered improvements on the Park, engaging himself in such details as selecting appropriate music for the Park's stereo system. His role has been universally acclaimed by the people.

Now, the Rizal Park (this includes Luneta) is easily one of the most beautiful and biggest parks in the world. It has flaws but in its basic concept, as a people's park, it more than serves its purpose. There is nothing that can diminish the Park's usefulness. Not criticism but assistance in fact that has helped make the Park the spiritual center of the country.

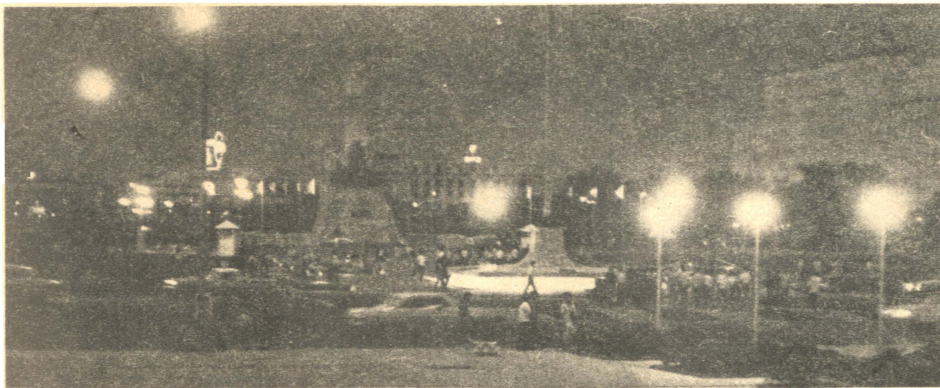
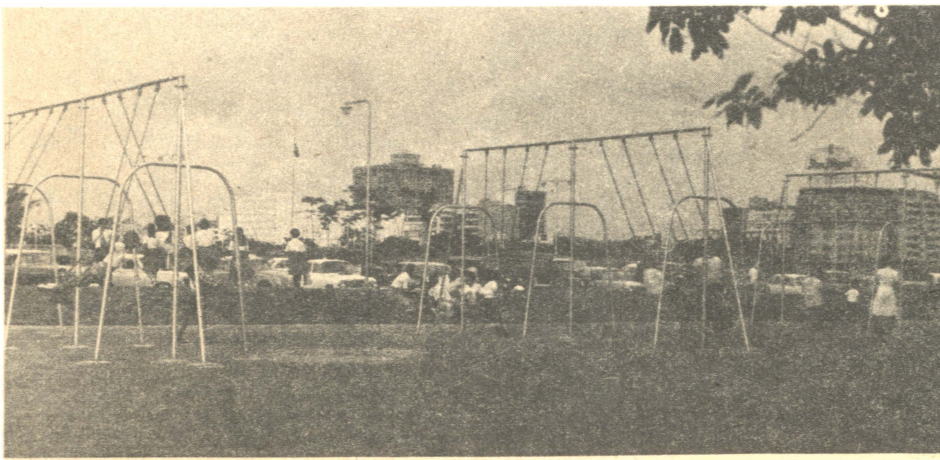
This assistance must be emphasized. A unique phenomenon of the Rizal Park is the so-called rise of the Luneta Filipino. He is the embodiment of discipline and order, of civic spirit and community consciousness. One wishes the Luneta Filipino were found in every community and sector of society. The Luneta Filipino in a big scene is the New Filipino, one with a profound concern for his community and his fellowmen, practising the ethics of discipline and cooperative work.

Fort Santiago is also a case of a decaying treasure restored. It is a miniature park although its mood is more somber and solemn. From a nightmarish prison compound, the Fort has been transformed into a noble shrine also through the efforts of Mrs. Marcos and Mr. Valencia. Like the Luneta, Fort Santiago echoes memory and nostalgia, history and remembrance. Yesterday lives in vivid hues because there are people who care. **PM**

The Luneta

Symbol of a People's Dynamism





The new Luneta is one of the biggest and most beautiful parks in the world. Carefully planned and well-kept, its sceneries are a delight to both local and foreign visitors. Its children's playgrounds are crowded with frolicking kids any day of the week. At night time one is always tempted to promenade along its cemented walks lined with blazing lights.



tips for the homemaker



ON HOME DECOR

Cover your porch to solve the problem of too much sun and sudden rain. Make it informal, bringing out a natural look. Dispense with ornate, heavy pieces of furniture. Bring in wickers and wrought irons. Choose colors that blend with the living room. For background, use woody barks, natural stones and rocks.

Living green plants inside freshen up the living room and other areas.

Utilize blank walls to grow plant creepers, or to hang airplants along its cool side.

Potted plants of different heights and foliage form attractive groupings. Hanging ferns from eaves and rafters are lovely little things to transform a drab skyline into one of beauty. Keeping a couple of caged birds among the potted palms will add glamour to the place.

Bring the plants inside among the furniture and against the walls. Stack them in shelves, put them on tables or create focal points with other pieces like driftwoods and sculptured rocks.

Wood-panelled walls not only make the room seem cozier, they require practically no special care or periodic re-decoration. Consider this next time you order replacements of your walls.

In planning a kitchen arrangement, concentrate on a triangle consisting of a range, refrigerator and sink. Most walking in the kitchen takes place between these three pieces of equipment.