

4

NI

UNIVERSITY OF THE PHILIPPINES
LIBRARY
JUL 10 1975

MARSMAN MAGAZINE

A MONTHLY CHRONICLE
OF THE ACTIVITIES
OF THE
ORGANIZATION

FOR THE INFORMATION OF SHAREHOLDERS
OF
MARSMAN AND COMPANY, INC.
MINE MANAGERS AND OPERATORS
AND
ASSOCIATED COMPANIES

VOL. I
MAY
1937
NO. 11

MANILA, PHILIPPINES

MISSING

PAGE/PAGES

MARSMAN AND COMPANY, INC.

BOARD OF CONSULTING ENGINEERS:

- J. O. Enberg, *Chairman*
- A. Beckerleg, *Director, Marsman & Company
and Marsman Investments, Ltd.*
- A. Welhaven, *Manager, Manila Division*
- J. O. Greenan, *Consulting Engineer*
- J. B. Stapler, *Manager, Southern Division*
- G. W. Kerr, *Consultant, Placer Mining*
- J. B. Findley, *Construction Engineer*
- C. A. Weekley, *General Mill Superintendent*
- R. W. Crosby, *Manager Northern Division*

GEOLOGICAL AND FIELD ENGINEERING SECTION:

- J. E. Atkinson, *Division Engineer*
- L. W. Buchanan, *Examining Engineer*
- D. W. Blythe, *at San Mauricio Mining Company*
- V. V. Clark, *Placer Engineer*
- A. M. Dixon, *at Gumaos Goldfields*
- Frank Erno, *General Superintendent, Minda-
nao Mining Company*
- J. E. Fyfe, *Southern Division, Engineer and
Geologist*
- D. L. Gardner, *Geologist, Southern Division*
- H. G. Iverson, *Metallurgist*
- G. H. Newman, *Engineer and Geologist*
- C. G. Scott, *at Acoje Mining Co., Zambales*

MACHINERY AND SUPPLY DEPARTMENT:

- C. H. Hirst, *Manager*
- G. H. Evans, *Purchasing Agent*
- H. A. Ottiger, *Baguio Branch Manager*
- H. J. H. Maclean, *Paracale Branch Manager*

INSURANCE DEPARTMENT:

- F. J. Courtney, *Manager*

ACCOUNTING DEPARTMENT:

- R. C. Allen, *Chief Mine Accountant*
- C. E. Strait, *Chief Commercial Accountant*

A PAGE OF PRODUCTION FIGURES

These figures are mine estimates only: final mint returns will differ slightly

	JANUARY				FEBRUARY				MARCH			
	1934	1935	1936	1937	1934	1935	1936	1937	1934	1935	1936	1937
Itoyon	₱170,750	196,714	169,785	264,700	171,370	176,136	189,827	237,648	170,847	186,118	215,747	269,610
San Mauricio				241,434			80,474	173,491			75,305	175,777
Suyoc Consolidated		52,104	101,628	98,850		46,768	92,098	87,873		58,503	98,910	126,146
United Paracale			103,702	119,686			73,280	109,822			76,858	93,631
Northern Mining ...			214	375			5,441	527			3,964	85
Coco Grove			8,157				44,990	nil			60,647	
TOTALS	₱170,750	248,818	383,486	725,045	171,370	222,904	486,110	609,361	170,847	244,621	531,431	665,250
	APRIL				MAY				JUNE			
	1934	1935	1936	1937	1934	1935	1936	1934	1935	1936	1936	
Itoyon	186,700	189,400	270,859	246,890	182,000	205,173	216,162	189,763	206,400	226,335	226,335	
San Mauricio			149,990	213,802			106,540			100,388	100,388	
Suyoc Consolidated		86,225	79,411	135,243		91,957	95,731		75,644	86,080	86,080	
United Paracale			87,755	119,933			109,431		70,481	101,494	101,494	
Northern Mining ...			4,009	495			4,819			13,564	13,564	
Coco Grove			45,531	nil			53,700			13,345	13,345	
TOTALS	₱186,700	275,625	637,555	716,363	182,000	297,130	586,383	189,763	352,525	541,206	541,206	
	JULY				AUGUST				SEPTEMBER			
Itoyon	177,626	209,218	253,132	170,268	71,353	207,423	₱195,603	172,972	226,538	226,538	226,538	
San Mauricio			161,607			202,786			213,420	213,420	213,420	
Suyoc Consolidated		68,362	85,672		75,673	120,719		81,773	99,931	99,931	99,931	
United Paracale		93,344	110,336		99,045	111,417		50,232	123,375	123,375	123,375	
Northern Mining ...			5,488			10,526			9,277	9,277	9,277	
Coco Grove			69,010			88,119			110,701	110,701	110,701	
TOTALS	₱177,626	370,924	685,245	170,268	246,071	740,990	195,603	304,977	783,242	783,242	783,242	
	OCTOBER				NOVEMBER				DECEMBER			
Itoyon	218,892	201,378	299,119	₱183,853	199,841	₱294,519	204,362	204,504	256,223	256,223	256,223	
San Mauricio			224,512			228,235			250,631	250,631	250,631	
Suyoc Consolidated		101,166	113,108		105,652	97,691		103,764	101,568	101,568	101,568	
United Paracale		80,403	138,415		77,711	122,732		90,215	116,996	116,996	116,996	
Northern Mining ...			2,444			5,871			6,732	6,732	6,732	
Coco Grove			95,545		7,981	48,101		8,100				
TOTALS	₱218,892	382,947	873,143	183,853	391,185	796,261	204,362	406,583	732,150	732,150	732,150	
	(First 4 Months)											
		1934	1935	1936	1937							
Itoyon		₱2,222,034	₱2,219,207	₱2,825,669	1,018,848							
San Mauricio				1,793,388	804,504							
Suyoc Consolidated			947,591	1,172,547	448,112							
United Paracale			561,431	1,275,791	443,072							
Northern Mining ...				72,349	1,482							
Coco Grove			16,081	636,958								
TOTALS	₱2,222,034	₱3,744,310	₱7,777,202	2,716,018								

Marsman Extends Quest For Gold To Mountains Of East Indies

The activities of Marsman interests in the Netherlands East Indies received world wide attention early in May through a United Press article. The article was written by Reuel S. Moore, United Press Staff Correspondent in London, formerly United Press representative in the Philippines. Mr. Moore's article follows:

Belief that the mountains and jungles of the East Indies may hold hidden fortunes in precious metals similar to those found in the Philippines has led J. H. Marsman, mining financier of Manila and London, to extend his quest for gold to the islands of that archipelago.

Marsman was an outstanding figure in the expansion of the Philippine Mining industry, which mounted sensationally from an annual production of a few million pesos to ₱44,000,000 in half a decade.

Success in his Philippine enterprises led him to organize the Marsman Hongkong China Company. The first shipment of wolfram (tungsten) from Hongkong, presaging prosperity for the company which is exploring mining properties throughout south China is now on the water enroute to Britain.

It was natural that Marsman whose energy is always seeking new outlets should turn next to the East Indies.

He proceeded to form the Marsman Algemeene Exploratie Maatschappij, which will explore properties in Sumatra, Borneo, Java and the Celebes, and other East Indian islands, as soon as legal formalities of the organization are completed in Holland.

Marsman disclosed shortly thereafter his intention to form another New Guinea company, to explore possibilities there, where new gold finds are reported.

The first is a 1,000,000 guilder company, and the New Guinea enterprise will be a 2,000,000 concern, with

Dutch, British and Philippine capital interested.

"There are vast areas in the East Indies where little is known of the mineral resources", Marsman told the United Press. "But enough gold and other metals have been found to warrant the hope that these islands might be susceptible to mining expansion paralleling that of the Philippines".

The boom in Philippine mining will aid in the development of mines in neighboring countries, he believes, because the industry there has accumulated a group of technicians who are available for prospecting and exploring in other nearby regions.

The new airplane service established between Manila and Hongkong, and the service in prospect between the Philippines and Java, will make his personnel highly mobile and regions heretofore remote will be easily accessible to skilled mining men.

Furthermore, the success of Philippine mines has made capital eager to find other opportunities for parallel profits.

The links already established between mining enterprises in the Philippines and neighboring countries will tend to encourage the interest of British and Dutch capital in the Philippines, Marsman believes. The British have shown considerable interest in Philippine mining, although Marsman estimated that not more than 5 per cent of the total capital invested in Philippine mines was British.

(Continued on page 12)

MARSMAN & COMPANY

has agreements with the following companies, on either a profit-sharing or fee basis, or both:

Itogon Mining Company

Suyoc Consolidated Mining Company

United Paracale Mining Company

San Mauricio Mining Company

Coco Grove, Inc.

Acoje Mining Company

Dulong Mining Company

Mindanao Mining Company

Gumaos Goldfields, Inc.

Filipinas Mining Corporation

Valley Placer Mining Company

Tinga Gold Mining Company

Kowloon Tungsten Project

Homestake Gold Mines, Inc.

\ Palidan-Suyoc Deep Level Tunnel Company

Elizabeth Anaconda Mining Association

Dayaka Mining Company

Marsman Algemeene Exploratie Maatschappij

In addition, the company carries on a consultation service with a competent staff of mining engineers, geologists, and metallurgists available for such work.

Further information will be furnished upon request.

Itoyon Mining Company

WARREN GILKISON

General Superintendent

During April the mill treated 16,079 tons of ore, from which ₱246,885.90 was recovered. The recovered value was ₱15.18 and the extraction was 87.25%.

Development

Development work amounted to 3,729 feet, a record monthly footage for Itoyon. Of this 1,174 feet were in operating development, and 2,511 feet in capital development. Of the operating advance, 966 feet were in ore, and of the capital development, 728 feet. Development work was satisfactory both as to footage and as to ore.

The new main hoist is practically complete and will be in operation early this month. Dumping cradles for the skips have arrived but cannot be installed until after the arrival of the skips.

The installation of all machinery sufficient to handle 1000 tons per day is now 95% complete, and work on the

new washing plant will be expedited as much as possible during May. The coarse crushing unit, washing plant, primary grinding unit and secondary grinding unit have all operated satisfactorily during the month.

The recently improved primary filtering unit was put into operation April 30 and with this in the circuit better overall metallurgical recovery can be expected.

The new Allen Diesel engines No. 4 and No. 5 have been bedded in and the crank cases and cylinder blocks are assembled and in position.

It has been found necessary to demolish eight of the oldest barrio houses and to replace them with larger buildings. Extensive necessary repairs are being made to houses in barrios Nos. 1, 2, 4, and 5. Further houses are to be built to alleviate the employees' housing problem. The tractor is being kept busy widening and improving the road between Itoyon and the Twin Rivers gate.

DULONG MINING COMPANY

The development advance during April was 371.5 feet. Exploration work by means of dogholes was continued and considerable information was obtained in this way.

The assay department is now in operation.

Mr. Strenger is now working the survey to Aurora 22 and through all the Aurora prospects.

TINGA GOLD MINING

Development work has been confined to the driving of an untimbered raise from the drift west in tunnel No. 1. A narrow stringer of ore is being followed, and as soon as this widens to a foot or a foot and a half, stopping will be commenced.

Routine repair work has been in progress and all tunnels are now accessible.

A concrete bulk head has been placed in tunnel No. 4 to provide an ample water supply.

MANILA MACHINERY & SUPPLY CO.

INCORPORATED
675-681, DASMARIÑAS
—MANILA—



Exclusive Philippines Agents

FOR THE FOLLOWING MANUFACTURERS:

JEFFREY MFG. CO., Columbus,
Ohio.

Conveying and Mill Equipment

TRAYLOR ENG. & MFG. CO.,

Allentown, Pa.

Crushing and Cement Equip-
ment

WALWORTH INTERNATIONAL
CO., New York City, N.Y.

Valves, Fittings, Tools

RUSTON & HORNSBY, LTD.,

Lincoln, England

Diesel Engines, Diesel Loco-
motives

BUCYRUS ERIE CO., South Mil-
waukee, Wisconsin.

Gold Dredges & Excavating
Equipment

IDEAL ELECTRIC & MFG. CO.,
Mansfield, Ohio.

Alternators, Generators, Mo-
tors.

MINE SAFETY APPLIANCES
CORP., Pittsburgh, Pa.

Complete Mine Safety Equip-
ment, Miner's Protective
Hats.

KIMBALL KROGH PUMP CO.,
San Francisco, Calif.

Pumps for all Mill Purposes.

THE A. LIETZ CO., San Fran-
cisco, Calif.

Complete Surveying Equip-
ment.

E. H. EDWARDS CO., San Fran-
cisco, Calif.

High Grade Wire Rope.

WRIGHT MFG. CO., 230 Park
Ave., New York City.

*Division of American Chain and
Cable Co., Inc.*

Hoists, Trolleys' Cranes.

SULLIVAN MACHINERY CO.,
New York, N. Y.

Hoists, Air Compressors, Rock
Drills, Etc.

DEWAR MFG. CO., Brooklyn,
N. Y.

"I.T.P." Carbide Lamps.

United Paracale Mining Company

R. H. CANON

General Superintendent

April gold production amounted to ₱119,933, from a tonnage of 10,321. The recovered value per ton was ₱11.67.

Sulphide mill unit No. 1 treated 3,670 tons of ore and recovered ₱97,153.04. Production from the Rocky Mountain group of Northern Mining & Development Company amounted to 18 tons of ore with a recovered value of ₱26.93 per ton. Percentage of extraction for this unit was 88.07%.

Oxide mill unit No. 2 treated 6,651 tons of ore, of which 5,603 tons came from Haliguang Bato and 1,048 tons from the mine. Percentage of extraction from this unit was 43.50%.

Development

Development for April amounted to 1,950 feet, of which 1,135 feet were

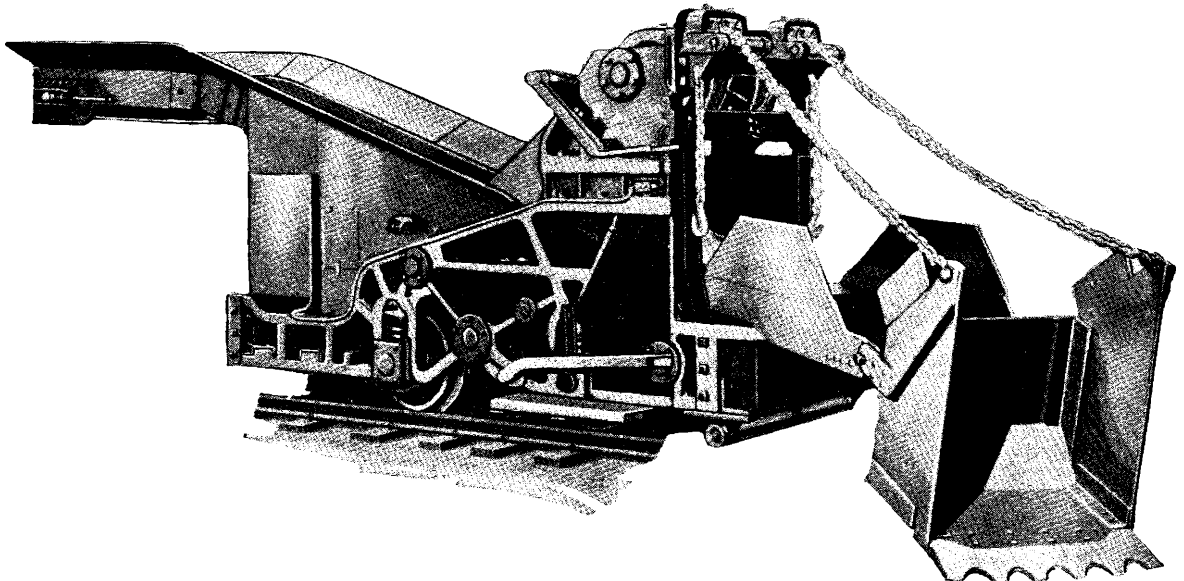
capital and 815 feet operating development. Of the total development advance 1,011 feet were in ore.

Baluarte shaft No. 1 was sunk 36 feet to a total depth of 405 feet below the zero level, after which the 400 level station cut was started.

Baluarte shaft No. 2 was sunk 14 feet to a depth of 319 feet below the zero level, the 300 level station was cut, and the 302 drifts north and south were advanced 18 and 22 feet respectively.

Diamond drilling is still going on.

Work was resumed on the power house cooling tower superstructure and pipe lines. The framework for the power house extension was erected and the roof put on during the month. Excavation for the drill shop building was continued.



A Conway Mucking Machine similar to this one is being installed at the Palidan-Suyoc Tunnel. The machine is now being assembled by F. S. Mott, factory representative. This machine is a 50 hp size and through its use it is expected that as high as 600 feet a month can be advanced in a tunnel.



Mr. Silen, Mr. James, Mr. Whittall, and Mr. George arrive via Patco.

Paracale Country Club [Sports Weekend.

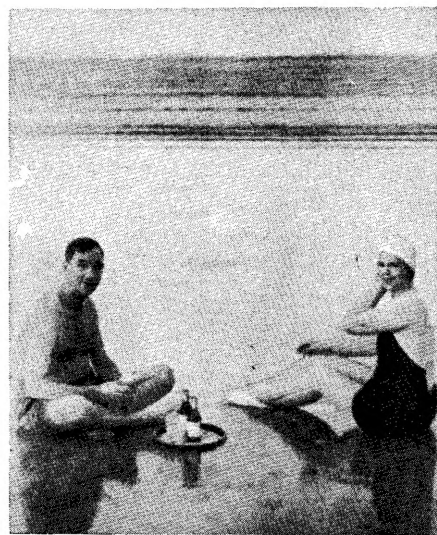
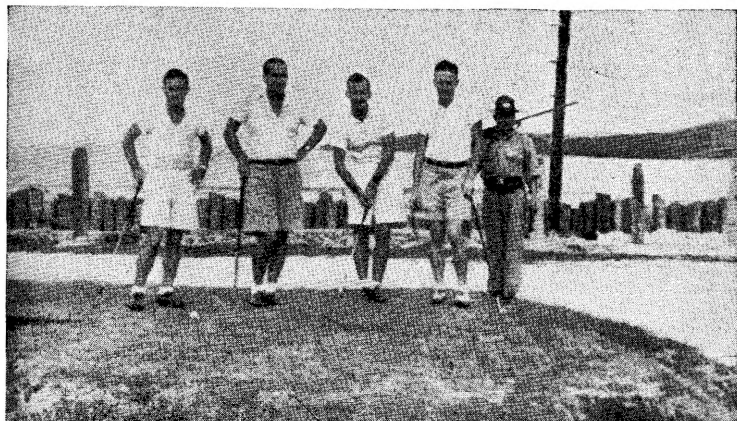
Bottom: Mr. Ewing, Mr. Stapler, Mr. Wotherspoon and Mr. Canon tee off. The armed guard kept score.



Mr. Barr tells one.



Left: Mr. McKibben entertains.



Mrs. Fyfe and Mr. Whittall take time out for a bit of refreshment.

NORTHERN MINING & DEVELOPMENT COMPANY

Work was resumed in the 19 north stope, where a small tonnage of good grade ore was extracted.

An advance of 26 feet was made in the footwall of the vein.

ELIZABETH ANACONDA MINING SYNDICATE

The development work during the month of April amounted to 467 feet of which 64.5 feet or 16.02% was in ore.

The 6-room bunkhouse has been finished and is now occupied. The barriero water supply system has been completed and is in use. One small oil house has been finished. This house holds two small tanks which are piped to the compressor house.

MARSMAN EXTENDS QUEST FOR GOLD TO MOUNTAINS OF EAST INDIES

(Continued from page 6)

Although rising prices and shortage of base metals created by European demand for rearmament tended to center interest in these metals, Marsman foresaw no immediate important developments for the Philippines arising from this situation.

For the moment, uncertainty in European security markets tends to slacken far-away investments and cause liquidation to obtain cash.

Marsman will return to the Philippines probably in June, stopping enroute in the East Indies and Hongkong.

E. E. Wing, Marsman official at present in London, plans to return about the same time.

Marsman predicted that gold production in the Philippines, topping P4,000,000 a month at present, can be expected to increase to P5,000,000 monthly by the end of the year.

FILIPINAS MINING CORPORATION

Operation at the Filipinas property during April consisted of gathering chromite in the various lenses. Work on the Princesa lens is practically complete, as it is on the Don Pedro No. 1 lens.

Work on the Queen deposit indicates a considerable tonnage of chromite ore. Most of this is very fine and will probably have to be washed before shipment. The amount of ore which has been extracted to date is estimated to be 3,652 tons.

ACOJE MINING COMPANY

The mining of chromite from Lens No. 2 has been started in order that 1,100 tons may be shipped by June first. A temporary loading platform was constructed for the loading of trucks. The delivery of chromite to the pier was started on May first.

The grading of the road to the pier was completed on April 8th. The road to the permanent camp site has been completely graded, the bridge finished and surfacing now 50% complete. The road to lens No. 4 is almost ready for surface.

Camp construction is well under way. Two bunk houses have been started and construction of office and bodega will begin at once.

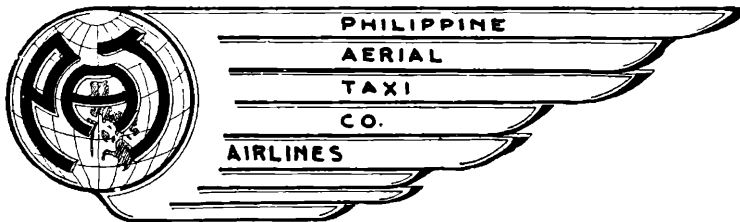
The excavation of ore bins at the pier is nearly finished. The tunnel under the bins is now underneath the bins and excavation work will be completed considerably sooner as all excavated materials will be removed through the tunnel. The light plant has been received and is being installed. The delivery of building materials and supplies by water is proving very satisfactory and is much cheaper than any other method.

Construction of the pier is showing good progress.

SAFETY

COMFORT

See the Philippines
from the air



Over One Million Miles Safely Flown

Serving the Mining Districts

BAGUIO - DAILY SERVICE - Leave Manila.. 6:30 a.m.
 Arrive Baguio.. 7:30 "
 Leave Baguio.. 7:40 "
 Arrive Manila.. 8:40 "
 ONE WAY - - - P25
 ROUND TRIP - P45

PARACALE - MON. Leave Manila.... 9:00 a.m.
 TUES. Arrive Paracale... 10:00 "
 WED. Leave Paracale... 10:00 "
 THURS. Arrive Manila.... 11:00 "
 FRI.
 ONE WAY - - - P35
 ROUND TRIP - P70

PHILIPPINE AERIAL TAXI CO.
 J. H. MARSMAN, President

RESERVATIONS

Mackay Radio	Tel. 2-43-45
Manila Hotel	" 2-20-22
Bay View Hotel	" 2-43-84
Grace Park Airport	" 2-43-30
Baguio	Royal Garage
Paracale	Marsman & Co.
	(H. Maclean)

SPEED

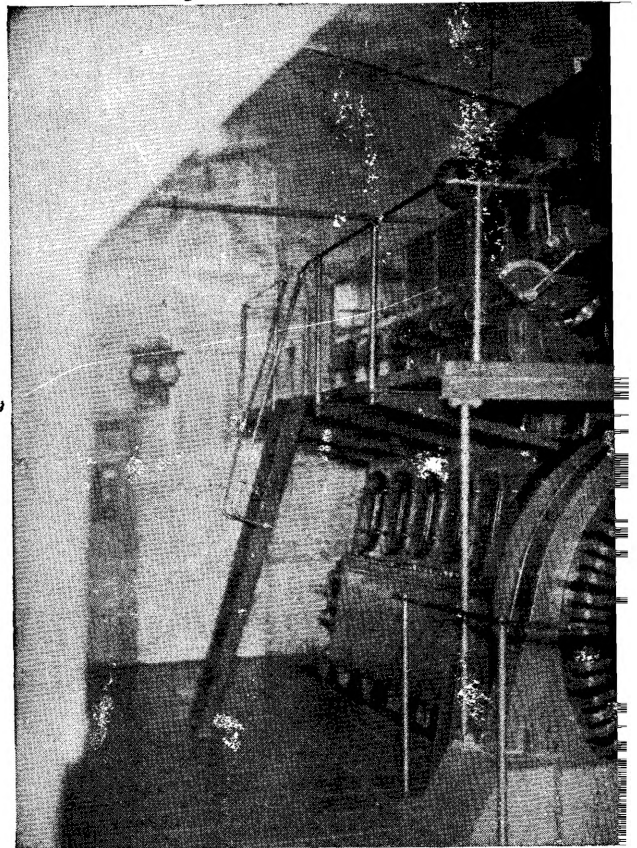
SERVICE

ALLEN DIESEL ECONOMY DURABILITY

W. H. ALLEN
BEDFORD

ENGAGED FOR OVER 50
MECHANICAL, HYDRAULIC,

STAFF OF SPECIALISTS RE-
TAINED WHOSE ADVICE ON
ANY PROBLEM IS GIVEN
WITHOUT OBLIGATION.



One of the Allen Diesels at the Itogon Mining Con

MARSMAN &

DISTRIBUTI

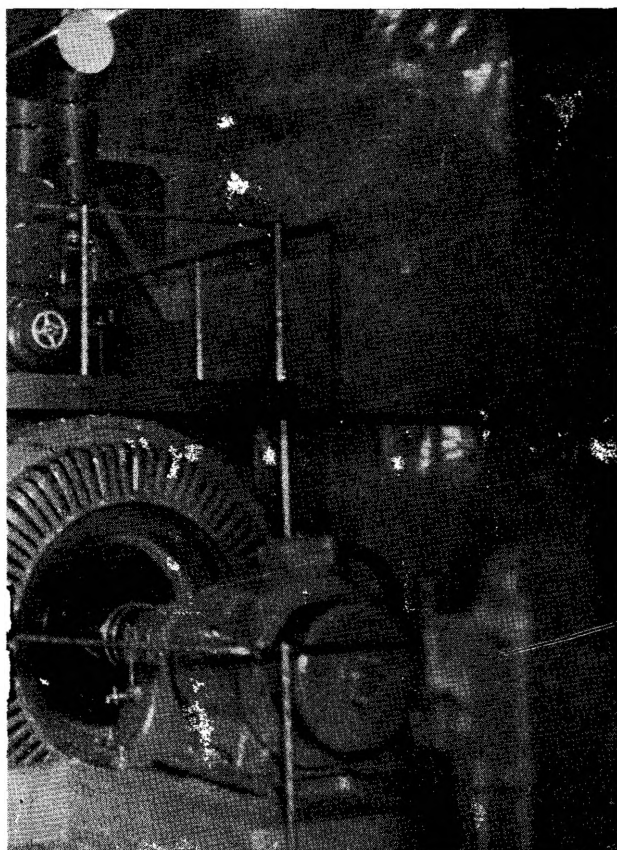
LEN

ENGINES

EFFICIENCY
DEPENDABILITY

SONS, LTD.
ENGLAND

YEARS IN MANUFACTURE OF
AND ELECTRICAL EQUIPMENT.



CONTRACTS OF ANY SIZE
UNDERTAKEN IN ANY PART
OF THE WORLD.

pany. This is a 6-Cylinder 500 horsepower engine.

& COMPANY

NG AGENTS

San Mauricio Mining Company

H. L. BARR

General Superintendent

San Mauricio milled 4,314 tons of ore during April, for a production of ₱213,801.90. Recovered value per ton was ₱48.09, and extraction was 93.44%.

Development

Development footage was 992, of which 186 was in operating and 806 in capital development. Of the total advance, 324 feet were driven in ore.

The main shaft of the San Mauricio mine was sunk 36 feet. The San Mauricio shaft was not advanced during the month due to the cutting of the station and sump on the 500 level.

The Santa Monica shaft was sunk 32 feet in very hard granite gneiss.

The Wilfley table and Weinig flotation cells are being installed in the mill at the present.

Work on ball mill No. 2 and the Aikins classifier was completed and these units put into service.

Transformers, pumps, and all cables were installed at the Santa Monica shaft.

Classes are being held for the miners, and are showing successful results in improving their working knowledge at the mine. These classes are to be continued.

PALIDAN-SUYOC DEEP LEVEL TUNNEL COMPANY

The face of the tunnel was advanced 245 feet during April, and the distance from the portal to the face is now 628 feet.

After careful observation of the Ruhrthaler Diesel locomotive in operation, it was considered advisable to place an order for a storage battery locomotive to make up the train, so as to avoid running the Diesel locomotive over the passing track and switches.

The Ruhrthaler Diesel is functioning very satisfactorily, but the punishment is quite severe over short switches, and consequently the lighter locomotive was ordered.

The average number of daily workmen has been increased to 98 because of freight handling, excessive road maintenance, and the starting of construction of one additional laborer's bunkhouse.

HOMESTAKE GOLD MINES, INC.

Prospecting operations progressed well during April.

The diamond drilling program has been started and most of the other prospecting activities suspended. The field prospecting work, however, will continue and all outcrops, jobs, stringers, etc.

will be surveyed and mapped. Specimens of the country rock will be systematically collected and submitted for microscopic determination. It is hoped that these rock determinations will furnish information as to rock contacts, and other geological conditions which will assist in the prospecting work.

Suyoc Consolidated Mining Company

L. M. ROBINSON

General Superintendent

The plant treated 6,171 tons of ore from which ₱21.90 was recovered per ton for a gross production of ₱135,243.29. Percentage of extraction for April was 89.2%.

Development

Development advance was 1,352 feet, of which 522.5 feet was in operating and 829.5 feet in capital development. Of the operating development, 123 feet

was in ore, while 53.5 feet of the capital development showed commercial values.

Excavation for the 2000 pump station has been completed and work has begun on pump foundations and excavation for the sump.

Work was completed on the 8-inch and 10-inch water columns in No. 1 shaft. Work was started on the installation of the 125-horsepower hoist motor and accessories at No. 1 shaft.

DAYAKA MINING COMPANY

During April the development advances amounted to 442.7 feet. Of this 202.9 feet was in the 300 level south and 100.8 feet in the 300 level north.

The mine is now equipped for rapid development. All new equipment and supplies on hand are sufficient to operate with for three months.

A saw mill and road is being built by Heald Lumber Company eight kilometers up the trail from Km. 48 on Bokod Road. This will put the road within 16 kilometers from camp.

The building program has been completed.

D. MORGAN REES & SONS LTD. GROVE WORKS. WHITCHURCH. CARDIFF.

MANUFACTURERS OF WIRE ROPES OF ALL KINDS for MINING, LOGGING, OVERHEAD ROPEWAYS, SUSPENSION BRIDGES, SHIPPING, ENGINEERING, OIL WELLS, STEAM TRAWLERS, STEAM PLOUGHING, AIRCRAFT, etc.

Also manufacturers of the Highest Grade of Wire, including Special Improved and Best Plough, I, proved and Best Patent Steel, Bright, Galvanized and Rust-Resisting.

Contractors to the ADMIRALTY, WAR OFFICE, AIR MINISTRY, COLONIAL OFFICE, etc.

Head Office: Cardiff: Telephone Whitchurch 770.

London Office: 34/35 Norfolk Street, W. C. 2.
Telephone: Temple Bar 8871.

Telegram: "Nurope-Cardiff".

Representing The Following Pro

ATLAS POWDER CO., SAN FRANCISCO.

Dynamite and Supplies

THE GOODMAN MFG. CO.

Trolley Locomotives

Conway Tunnel Mucking Machines

**AMERICAN POTASH and CHEMICAL CORP.,
LOS ANGELES**

"TRONA" Brand Soda Ash

COLORADO IRON WORKS, DENVER, COLO.

Akins Classifiers

THE EIMCO CORP., SALT LAKE.

New and Reconditioned Machinery

A. S. CAMERON PUMP WORKS

Centrifugal Pumps for Mines and Mills

C. C. FILSON CO., SEATTLE

Hats, Coats, Pants, Waterproof.

**BRUKSKONCERNEN AKTIEBOLAG,
FAGERSTA, SWEDEN**

Drill Steel

**FRASER & CHALMERS ENGINEERING WORKS,
ERITH, KENT.**

Ball Mills and Heavy Mining Machinery.

MINE a
SUPPL
EQUIP

GASO
O
GRE

MARSMAN AND

ducts And Firms

THE DENVER FIRE CLAY CO., DENVER, COLO.
DFC Assay Equipment and Supplies.

**GREAT WESTERN ELECTRIC CHEMICAL CO.,
SAN FRANCISCO**
Flotation Reagents, Xanthates, etc.

nd MILL
IES and
MENT

**JOSHUA HENDY IRON WORKS,
SAN FRANCISCO**
Mine Hoists

**MANCHA STORAGE BATTERY LOCOMOTIVE CO.,
CHICAGO**
Battery Locomotives

LINE
LS
ASES

D. MORGAN REES & SONS LTD., ENGLAND
High Grade Wire Rope

T. C. WILSON CO., SAN FRANCISCO
Pine Oil

JUSTRITE MFG., CO., CHICAGO
Carbide Lamps

W. H. ALLEN SONS & CO., LTD., BEDFORD, ENGLAND
Diesel Engines

COMPANY, INC.

Paracale Country Club Sports Weekend

Manila members of the Paracale Country Club were the guests of the Paracale group at a sports weekend, May 15, 1937. About thirty-five representatives of contributing firms made the trip to Paracale, most by Patco planes. Baseball, golf and badminton contests were held between the visitors and the Paracale members. The Invaders were successful in baseball and golf and held the Paracale badminton stars to tie. Because of rainy weather the tennis courts were not completed in time for weekend festivities.

C. E. Stone vs. J. C. J. Dunn (1).
 C. H. Fossum vs. H. L. Barr (1).
 Finals 5 Final 3

BADMINTON

D. Stapler and C. Hirst (2) vs J. E. Fyfe and H. T. Hutchinson.
 N. Wotherspoon and R. Ewing vs. J. B. Stapler and R. H. Canon (2).
 B. Silen and R. McKibben (2) vs. J. C. J. Dunn and Bill Barr.
 E. Heybroek and J. George vs. A. M. Morris and W. Knott (2).
 Draw 4-4

Lineups for the sport events:

BASEBALL

Game umpired by Jack George.

<i>Invaders</i>		<i>Paracale</i>	
B. Russell	c	H. T. Hutchinson	
B. H. Silen	p	E. M. Burno	
C. A. Weekley	1b	H. L. Barr	
R. Ewing	2b	A. S. MacArthur	
C. Hirst	3b	T. White	
C. L. Larsen	ss	R. H. Canon	
N. Wotherspoon	ss	R. Woddell	
R. B. Stapler	lf	H. L. Baker	
C. Sherwood	cf	C. R. Hubbard	
C. Stone	rf	J. Strong	
Runs.....	7	Runs.....	1
Hits.....	12	Hits.....	4
Errors.....	2	Errors.....	12

GOLF

The golf matches were interrupted by rain on Saturday but played off on Sunday.

N. Wotherspoon (1) vs J. B. Stapler.
 J. George (1) vs. Dr. P. C. Palencia.
 H. C. Whittall (1) vs. H. MacLean.
 R. Ewing (1) vs. R. H. Canon.
 R. A. MacKibben vs. H. T. Hutchinson (1).

Guests from Manila were C. E. Stone, Manila Machinery; C. L. Larsen, Atlantic, Gulf and Pacific Co.; C. B. Steven, American Oxygen; C. H. Hirst, Marsman and Co.; R. B. Stapler, Marsman and Co.; R. A. McKibben, General Electric Co.; S. J. Wilson, S. J. Wilson and Co.; B. H. Silen, S. J. Wilson and Co.; J. George, S. J. Wilson and Co.; E. Muller, Kuenzle and Streiff; A. P. Drakeford, Socony Vacuum; W. C. Gulick, Goodrich Tire Co.; C. A. Fossum, Norton and Harrison; R. Ewing, Swan, Culbertson and Fritz; E. Heybroek, Wise and Company; N. Wotherspoon, Wise and Co.; H. C. Whittall, Asiatic Petroleum; J. E. Wilfarth, Botica Boie; J. Blades, Honolulu Iron Works; W. A. Heppel, San Miguel Brewery; E. Cichy, Pacific Com'l Co.; C. Sherwood, Western Equipment; E. Maitland, Crown Mines; also Judge and Mrs. Ramon Quisumbing, court of first instance, Daet; Capt. Legaspi and F. Segovia, district engineer.

The affair was arranged in order that the contributing members of the club might have the opportunity of looking over the new clubhouse and grounds. C. H. Hirst was in charge of the Manila

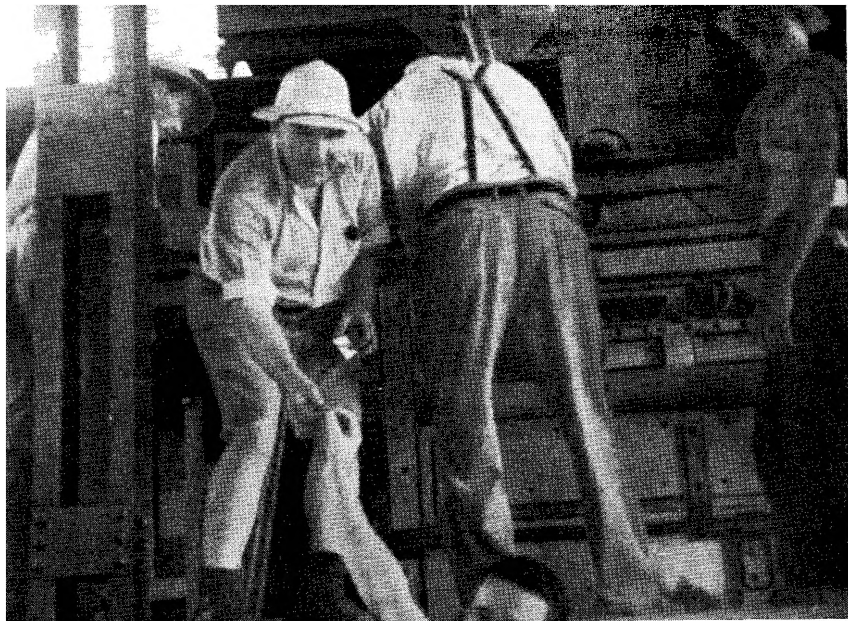
contingent, while J. B. Stapler, H. L. Barr, Hector Maclean, and J. C. H. Dunn took care of arrangements here.

The Paracale Country Club was started here a few months ago with Marsman and Company, the United Paracale Mining Company, and the San Mauricio Mining Company as proprietary members. Contributing members are:

San Miguel Brewery, A. L. Ammen Transportation Company, Atlantic Gulf and Pacific Company, Goodrich International Rubber Co., Philippine American Drug Company, Wise and Company, Max Kummer and Co., Swan, Culbertson and Fritz, Manila Machinery and Supply Company, American Oxygen and Acetylene Company, Norton and Harrison Co., Pacific Commercial Company, Standard-Vacuum Oil Company, Asiatic Petroleum Oil Co., Edward J. Nell and Company, Sta. Rosa Mining Company, General Electric Company, Inc., Philippine Iron Mines, Union Management, Earnshaws Docks and Honolulu Iron Works, Opisso and Company, Sorox y Cia., Luzon Stevedoring Company, Engineering Equipment and Supply Co., H. A. Wendt and Company, Luzon Brokerage Company, Philippine Education Company, J. P. Heilbronn, Western Equipment and Supply Co., L. Perez y Cia., Royal Paracale Mines, J. B. Findley, Kuenzle & Streiff, Inc.

These views are enlargements of moving pictures taken by Richard Hubert.

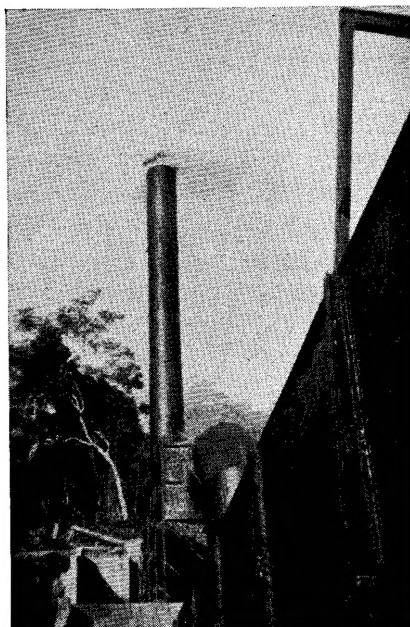




New Smelter Is Blown In

C. A. Weekley, General Mill Superintendent for Marsman and Company, lights the match to blow in the new Marsman smelter at Mambulao, on May 15th. Beside him, looking at the furnace, is Fred Furnas, veteran smelting man who is furnace superintendent.

*And the smoke starts to pour out
of the smelter stack!*



A STEP AHEAD

(Continued from page 1)

In introducing a new industry to the Philippines—for smelting can so be classified—Marsman and Company is following its policy of leading the way in mining. In constructing a smelter at a time when to most people economic conditions in the Philippines are unsettled, Marsman and Company shows its faith in the future of the Commonwealth.

GUMAOS GOLDFIELDS, INC.

Development work was carried on during April in seven tunnels. Diamond Drill Hole No. 8 was advanced 378 feet from the collar. Diamond Drill Hole No. 9 was started and advanced several hundred feet.

Diamond drilling has been temporarily suspended. The camp site is being cleaned up and made safer for the health of the employees.

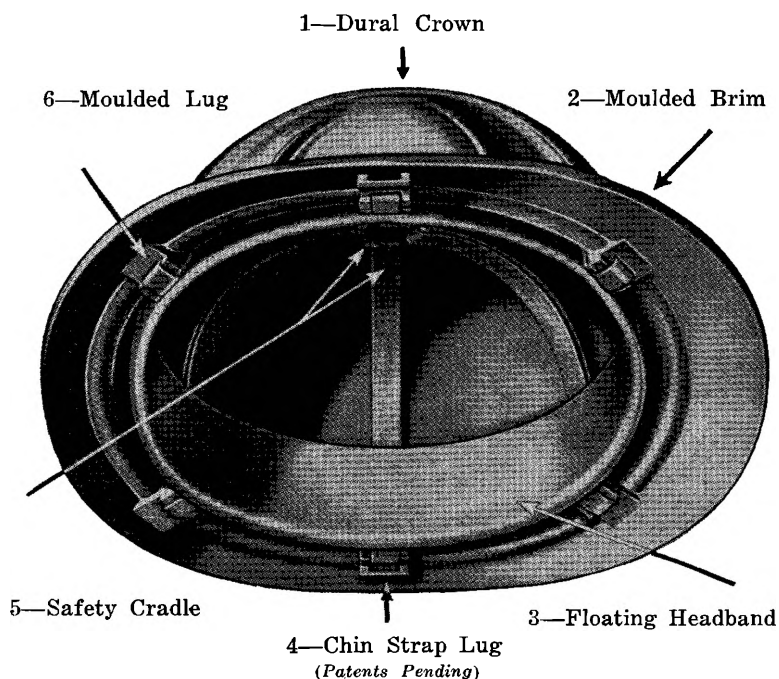
The Greatest Protection

The McDonald Safety Hat embodies many new features in construction which add to the comfort, durability and safety of protective hats.

The one-piece crown is Dural, (Specially hardened heat treated aluminium alloy) which speaks for itself as to strength and blow resistance as this material is used in plane construction.

The moulded slightly flexible brim offers more protection as the hat is not easily knocked off, which is a decided advantage for men working in close places.

The hat has adequate ventilation for underground work and has added features for outside work where head protection is required, such as in the oil fields, quarries and construction work, because it is cooled by radiation.



Manufactured and Sold by

B. F. McDONALD COMPANY

1248 SOUTH HOPE STREET

LOS ANGELES, CALIFORNIA, U. S. A.

PHILIPPINE AGENTS:

MARSMAN & CO. INC.



Major Adolphus Beckerleg

Let's Get Acquainted

The expansion of the Marsman mining enterprises during the past few years has been possible to a considerable extent through the interest which English financiers have taken in the organization. Mr. Marsman went to London in 1935, and effected the organization of Marsman Investments, Ltd., in which there is much English capital.

Major Adolphus Beckerleg, a mining engineer of wide experience was chosen by the London group to represent them in the Philippines. As a director of Marsman and Company and of Marsman Investments, Ltd., Major Beckerleg is in close touch with all phases of the various projects of the organization. He is a member of the executive and finance committees of Marsman and Company, and thus is active in shaping the policies of the company.

A native of Penzance, Cornwall, Major Beckerleg was brought up in one of the oldest mining regions of the world. He was educated at the Cornwall School of Mines, and had his early mining experience in the tin and copper mines of that part of England. He is a member of the Institution of Mining and Metallurgy of London.

During the early years of his career he worked in southern India, several

sections of Africa, and in South America. In each of these countries he did general mining engineering work, and specialized in underground mining. He has held several important executive positions with leading firms.

At the outbreak of the World War, Major Beckerleg became a second lieutenant in the Royal Engineers. He took regular staff courses, rose to the rank of colonel, and was retired with the rank of major in 1920. He served in France and in North Russia, was three times wounded, and received several decorations.

Before coming to the Philippines in 1935, Major Beckerleg was consulting engineer for the Hollybush Trust Limited, of London. When Mr. Marsman interested this group in the Philippines, Major Beckerleg was at once chosen to investigate conditions here. His reports led to the investment of substantial amounts of British money in local mining.

Major Beckerleg was an International Rugby Footballer, and takes a keen interest in sports of all kind. He makes his home in Manila when he is not in the field at one of the many mining camps of the organization.

With The Marsman Men

A number of new arrivals in the Philippine Islands joined the staff of Marsman and Company during April:

Edward S. Burno—Mr. Burno is a graduate of Colorado College, Colorado Springs; he also attended the Colorado School of Mines for two years. He has had several years of mining experience in Colorado and has been engaged in engineering work of various kinds for some time. For three years he worked on civil engineering projects, while he has had two years experience in construction work. Mr. Burno is mine shift boss at San Mauricio.

* * *

Frank Rose, Jr.—Mr. Rose has joined the Itogon Mining Company as mine shift boss. He spent three and a half years studying civil engineering at the Los Angeles Junior College. He then attended the University of Hawaii. He has had considerable practical experience in mining and construction work.

* * *

T. Anden De Vore—A native of Houston, Texas, Mr. De Vore's home is in Los Angeles, California. He spent seven years as foreman of a silver-gold refinery and smelter. His last position was as metallurgist and mill superintendent for the Carlyle Mining Co. in California.

* * *

Arthur C. Noble—Mr. Noble is a Californian and he has been working in mines since 1907. He is a master mechanic and has had experience in Mexico as well as several of the Western States. He is now master Mechanic at San Mauricio.

Philip K. Strong—Mr. Strong is one of the new mine shift bosses at San Mauricio. He is a graduate of the College of Mining, University of California, and has had experience in the Western States.

* * *

P. A. Lewis—Mr. Lewis arrived in Manila from Korea where he has been on the staff of the Oriental Consolidated Mining Company for the past three years. Mr. Lewis was born in St. Louis, and received his degree from the Colorado School of Mines several years ago. He is now on the mine staff at Itogon.

* * *

Donald Ross—Mr. Ross is a native of California and a graduate of the University of California. Mr. Ross has had considerable experience in oil fields. He is a geologist and is at present stationed in Leyte.

Q. S. LOCKHART

Q. S. Lockhart, 52, a native of Cowden, Illinois died this month in Iligan, Mindanao. Mr. Lockhart had been ill for some time and his death resulted from complications arising from acute kidney trouble. Mr. Lockhart came to the Islands in September 1936, from the United States where he had varied experience in mining. At the time of his death he was in charge of a drilling crew in northern Mindanao. His widow, Mrs. Mae Lockhart, lives at 3902 Taft Ave. Extension.

Marsman Engineers Go To Sumatra

J. O. Greenan, Consulting Engineer of Marsman and Company, and G. W. Kerr, Consultant on placer mining, of the Marsman Board of Engineers, left Manila on April 27th for Sumatra to supervise exploration work on various mining properties.

F. E. Blanc, diamond driller who has been working at various Marsman properties left the Islands about the same time for Sumatra.

Lawrence W. Buchanan, Charles H. McIlvaine and H. T. Merrill, left for Sumatra April 18th. Mr. Buchanan is a member of the geological and field staff, while Mr. McIlvaine and Mr. Merrill are diamond drillers. The

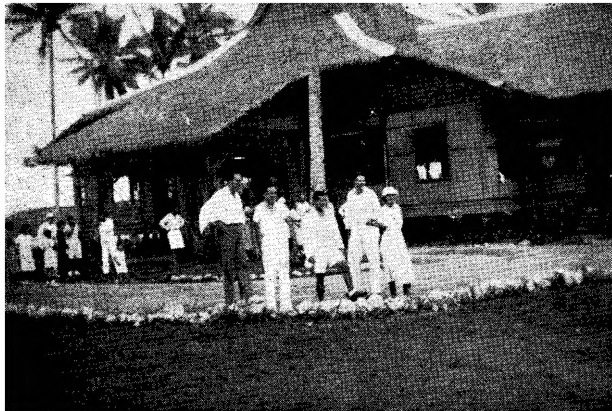
party is now examining properties in Borneo and Sumatra.

R. C. Allen, chief mine accountant, has just returned to Manila after spending several weeks visiting properties under the management of Marsman and Company. As a part of a service Marsman and Company offers to mining companies, Mr. Allen makes periodical visits to the various mine offices. He checks details of accounting with the different mine accountants and assists them in keeping their records. All of the companies under Marsman management have a uniform accounting system. This greatly facilitates the work of the Board of Consulting Engineers in keeping a close check of costs and results.

The Annual Picnic Of Marsman Employees



About 120 members of the organization and their families attended the affair, which was held April 18 at Los Baños.



A group in front of the Paracale Country Club on May 15th during the height of the sports weekend festivities.

Charlie Hirst, left, Manager of the Machinery and Supply Department, talking things over with Charlie Fletcher, Mechanical Superintendent of the southern division of the Company. This picture was taken in Paracale during the sports weekend.



Marsman and Company, Inc.

Insurance Department

Representing

The Employers' Liability Assurance Corporation, Ltd.

Insurance Company of North America

North China Insurance Company, Ltd.

The Manufacturers Life Insurance Company of Canada

Filipinas Life Assurance Company

Crown Life Insurance Company of Canada

Occidental Life Insurance Company of U.S.A.

Asia Life Insurance Company

120°

125°

MINES UNDER MANAGEMENT

Or

MARSMAN & CO., INC.

MANILA, PHILIPPINES



LUZON

Dayaka
 Valley Placer
 Acoje Mining
 Fillpinas Mining
 Baguio
 Irogon Mining
 Gold Pocket Placer
 Palidan - Suyoc Deep Level
 Tunnel
 Suyoc Consolidated

PARACALE DISTRICT

- 1 San Mauricio
- 2 Mother Lode
- 3 Tinga Gold
- 4 United Paracale
- 5 Coco Grove
- 6 Guinaus Goldfields

TO HONG KONG
331 NAUTICAL MILES

MINDORO

MASBATE

SAHAR

PANAY

LEYTE

NEGROS

CEBU

BOHOL

SULU SEA

MINDANAO

Mindanao Mining

BORNEO

120°

125°

20°

15°

15°

10°

5°

5°