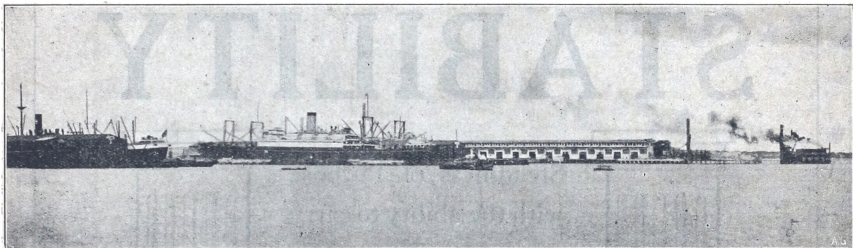




SHIPPING NOTES



SHIPPING REVIEW

By H. M. CAVENDER

General Agent, Dollar Steamship Line



During September there was more space available at Philippine ports to ports throuth the world than possibly has been on the berth and in want of but without cargo es during any month in the past ten years. Tonnage increases on every hand while there is

but a slight annual increase in the exportation of cargoes from the archipelago. Inward cargoes were heavy into the port of Manila. Outports of entry received more cargo direct from the outside. There is a noticeable gradual increase in the direct

importation to outports of entry. Manila is gradually losing the transshipment feature as she has done in the case of much export cargo.

Available figures as to outward passengers show that during September a total of 1104 people left the islands by regular lines. No figures are yet available giving the total passengers entering during the same period. Of those departing we find them distributed as follows: (first figure represents cabin passengers, second figure steerage) to Hongkong 116—128; Shanghai 14—5; Japan 8—2; Honolulu 2—589; Pacific coast 68—155; Singapore 9—0; Europe 8—0 and 1 cabin passenger to New York.

Filipino emigration during September to Honolulu and to the Pacific coast, included in the foregoing paragraph, amounted to Honolulu 589 as compared with 307 in August and to the Pacific coast 155 as compared with 252 in August.

The combination of the American Far East and the Pacific-Australian lines in a

single service known as the American-Australian Oriental Line is completed. The new line, owned by the United States Shipping Board, is under the operating management of Swayne & Hoyt. The management in the Far East is directly under the control of Swayne & Hoyt with the firm of L. Everett, Inc. acting as Executive Head of the Oriental agencies. The main office is at Shanghai; at Manila the firm is presented by Mr. G. P. Bradford with offices in the Pacific Building. A new schedule of operation has been announced, operations are divided in three interlocking routes, the first from Pacific Coast ports

ADMIRAL ORIENTAL LINE

MANILA



SEATTLE

VIA HONGKONG - SHANGHAI - KOBE - YOKOHAMA

	Leaves Manila	Arrives Seattle
PRESIDENT MCKINLEY	Oct. 16	Nov. 7
PRESIDENT JEFFERSON	Oct. 28	Nov. 19
PRESIDENT GRANT	Nov. 9	Dec. 2
PRESIDENT MADISON	Nov. 21	Dec. 13
PRESIDENT JACKSON	Dec. 3	Dec. 25

ONLY TWO-DAY STOP AT HONGKONG
TWENTY-THREE DAYS MANILA TO SEATTLE

ADMIRAL ORIENTAL LINE

PHONE 22441

MANILA

24 DAVID

OXYGEN

Electrolytic
Oxygen 99%
pure

HYDROGEN

Electrolytic
Hydrogen 99%
pure

ACETYLENE

Dissolved
Acetylene for
all purposes

WELDING

Fully Equipped
Oxy-Acetylene
Welding Shops

BATTERIES

Frost O Lite
Electric Storage
Batteries



Philippine Acetylene Co.

281 Calle Cristobal

MANILA

to New Zealand and Australia with sailings every four weeks, taking in Auckland, South Island ports and outports, omitting Wellington and Lyttleton; the second route is to Auckland and Wellington, thence to Australia, loading from New Zealand and Australia for the Philippines and Hongkong direct to Los Angeles and San Francisco; the third route is outward to Yokohama, Kobe, Shanghai, Hongkong, Manila and Singapore affording shippers an opportunity to ship to outports in China, the Philippines and Indo China. Four ships have been allocated to the first route, six to the second and six to the third, giving in all sixteen large, fast cargo liners.

G. P. Bradford, agent in the Philippine for Swayne and Hoyt, left Manila September 26 on board the s.s. *Beauport* for southern ports. He expects to be away from Manila three weeks.

Neil Macleod left Manila for Shanghai October 4 on board the s.s. *President Jackson*. Mr. Macleod is manager of the shipping department of Smith, Bell & Co., general agents in the Philippines for Alfred Holt's interests, and it is understood he proceeds to Shanghai to attend the annual get-together Holt representatives stage in the Orient.

Hilton Carson

Furniture Moved
Contract Hauling
Baggage Transferred
Dump Trucks for Hire

AUTO TRUCKING 1955 Ascarrage
CO. Phone 22345

SHIPPING PERSONALS

Carl Seitz, oriental manager of the Oregon Oriental Line, after spending more than a month in the Philippines, returned to his headquarters at Shanghai about the s.s. *President Taft*, sailed September 22.

J. G. Megirt arrived in Manila September 5 aboard the s.s. *President Pierre*, to take up duties with the Dollar and Admiral lines as claim agent, relieving Mr. Wells, transferred. Mr. Megirt, formerly a commissioned officer in the Army Transport Service, left that service only recently to join the Dollars.

Shipping row and the whole of Manila was violently jarred on September 16 when telegraphic advices announced the untimely deaths of Lester "Ham" Hamilton and Jack Plummer.

Manila to New York via Suez and Europe

See the Old World on your trip home. Stops of several days in many ports. You can travel through Europe and catch our boat for New York via Southampton, England, at Bremen. "The Most Interesting Trip In The World."

NORDDEUTSCHER LLOYD

Zueilig & von Knobelsdorff
AGENTS

90 Rosario
Manila

Phone 22324

DOLLAR STEAMSHIP LINE

SERVES THE WORLD

ROUND THE WORLD

24 Calle David

Telephone 22441

High-class Passenger and Freight Service

SAILINGS
EVERY
14 DAYS

The President Liners Offer
SPEED—SERVICE—COURTESY—COMFORT
Excellent Food, Comfortable Cabins, Broad Decks,
American Orchestra, Dancing, Swimming Pool,
Sports.

SAILINGS
EVERY
14 DAYS

To SAN FRANCISCO

via

HONGKONG, SHANGHAI, KOBE,
YOKOHAMA and HONOLULU

NEXT SAILING

PRESIDENT LINCOLN - - - Oct. 20
PRESIDENT CLEVELAND - - - Nov. 3

THROUGH RATES TO EUROPE
Railway Tickets to all points in America.

To BOSTON-NEW YORK

via

SINGAPORE, PENANG, COLOMBO,
SUEZ, PORT SAID, ALEXANDRIA
NAPLES, GENOA, MARSEILLES

Round—the—World

NEXT SAILING

PRESIDENT MONROE - - - Oct. 28
PRESIDENT HARRISON - - - Nov. 11

Stopovers will be granted which permit the making of interesting side trips at various points.