

Fi

NI

THE

UNIVERSITY OF THE PHILIPPINES  
LIBRARY  
OCT 10 1975

# MARSMAN MAGAZINE

VOL. III

**FEBRUARY**

1939

NO. 8

MANILA, PHILIPPINES

February  
1939

THE  
**MARSMAN**  
MAGAZINE

---

---

Vol. III  
No. 8

## Two New Gold Output Records

Two Marsman operated mines established new alltime high monthly records during January. San Mauricio passed all existing marks with a production of P504,168.56 from 9,453 tons of ore milled. Average recovery of P53.33 per ton also established a new mark and leads all other operating companies in the Philippines in the grade of ore treated.

United Paracale continued to establish new production records in January with a gross recovery of P238,355.11. The mill treated 9,426 tons of ore for P25.29 per ton average recovery.

Total production from the one placer and four lode operations amounted to P1,372,691.09, from 54,508 tons of ore milled and 351,545 cubic yards of gravel dredged. Output was approximately P47,000 higher than that of the previous month.

---

### MARSMAN TAKES OVER ROYAL PARACALE

Marsman & Co., Inc. has taken over the management of Royal Paracale Mines, Inc. The main offices of Royal Paracale are now located in the Marsman Building in the Port Area, and the transfer office is that of Marsman and Company.

The stock of Royal Paracale Mines, Inc., was listed on the big board of the Manila Stock Exchange on Tuesday,

February 21. The company has an authorized capital stock of P2,000,000, of which P665,800 is subscribed and P642,300 paid up. The company was incorporated April 8, 1937, to take over a group of 67 lode claims in Mambulao. In June, 1937, the company acquired the I. X. L.-Argos mine, including a 100-ton milling plant, in Masbate. This property consists of 55 claims

lying to the west of the I. X. L. property.

Ore reserves, including positive and probable ore, as of January 1, 1939 are 65,000 tons with an estimated value of P670,000. Marsman & Company during February, 1939, after examination, has undertaken the management of Royal Paracale. The general plan which will be followed is to bring the capacity of the plant now in operation up to 100 tons per day or more with the best possible extraction and most economical working cost.

In the mine, the winze will be unwatered, and the hangingwall and footwall structures crosscut at the 420 level, and the ore shoots on this horizon developed by drifting and raises. Should encouraging values be encountered, the winze will be continued to the 520 level and the vein crosscut and

developed at this point. This development should increase the ore reserves to a tonnage sufficient for at least three years of operation. If good ore is encountered at the 520 level, it is proposed to sink a working shaft to a depth of 600 feet below the present 320 or mill head level, and develop the vein at these lower horizons. Several promising veins have been crosscut in the agglomerate series which, apparently, carries the highest grade veins throughout the district. These will be developed as rapidly as possible. Other favorable indications are known on various parts of the property and these will be investigated with a view to development. As soon as enough ore is indicated to assure a long operation, the mill will be increased to a capacity of 200 tons a day in order to lower operating costs.

---

---

# Marsman Trading Corporation

---

---

*Philippine Representatives for the*  
**ATLAS POWDER COMPANY**



*Everything for Blasting*

San Francisco, California

*Cable Address—Giant—San Francisco, California*



# ATLAS EXPLOSIVES

## AND BLASTING SUPPLIES

# Marsman Trading Corporation

## The growth of the machinery and supply unit of the organization

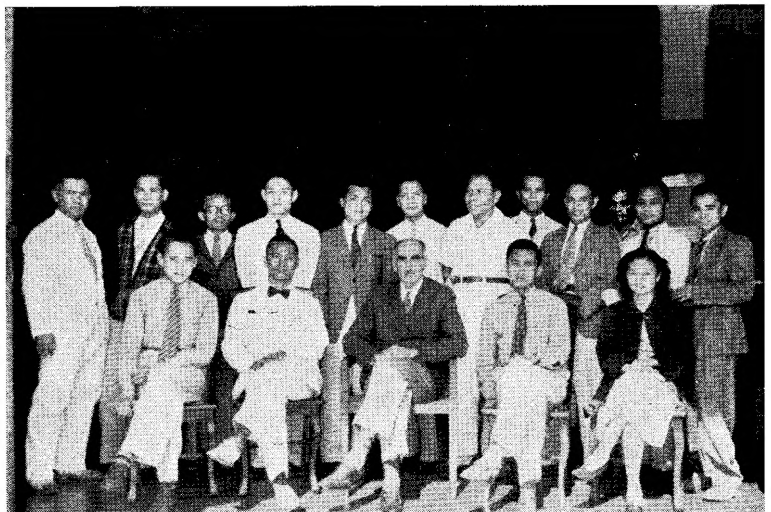
An integral part of the important share in the development of the mining industry of the Philippines, borne by the Marsman organization, has been the supplying of machinery and equipment to the various companies all over the Islands. Marsman Trading Corporation now occupies a prominent position in the mercantile business of the industry; its growth since its organization in August, 1937, has been steady and rapid.

In 1921, when Mr. and Mrs. Marsman undertook the development of the raw prospect which is now the Itogon Mining Company, facilities for supplying the many and complex needs of the mining industry (then centered in Baguio) were lacking. There were no supply houses nearer than Manila, and transportation from terminals to the mines was infrequent and unreliable. In addition to the development of the Itogon mine, Mr. Marsman gradually became interested in other projects, among which were general engineering and contracting, and in 1929, Marsman

& Company, Inc. was organized for the purpose of carrying on the various activities which he had heretofore conducted personally. The general engineering and contracting department was then established and undertook the erection of many building projects in the Baguio district.

Three years later, in 1932, a mine consulting and a mine management department were organized by the company. With the coming of the boom in 1933, the company was in a position to supply its clients with the benefits of professional mining knowledge combined with trained business and financial services. Along with the rapid growth of mining, there naturally came a steady growth in the demand for machinery and equipment. Because of the increasing volume of business in the merchandising department of Marsman & Company, it was decided, in 1937, to organize a new corporation to take over the merchandizing end of that company. Accordingly, the Marsman Trading Corporation was formed on August

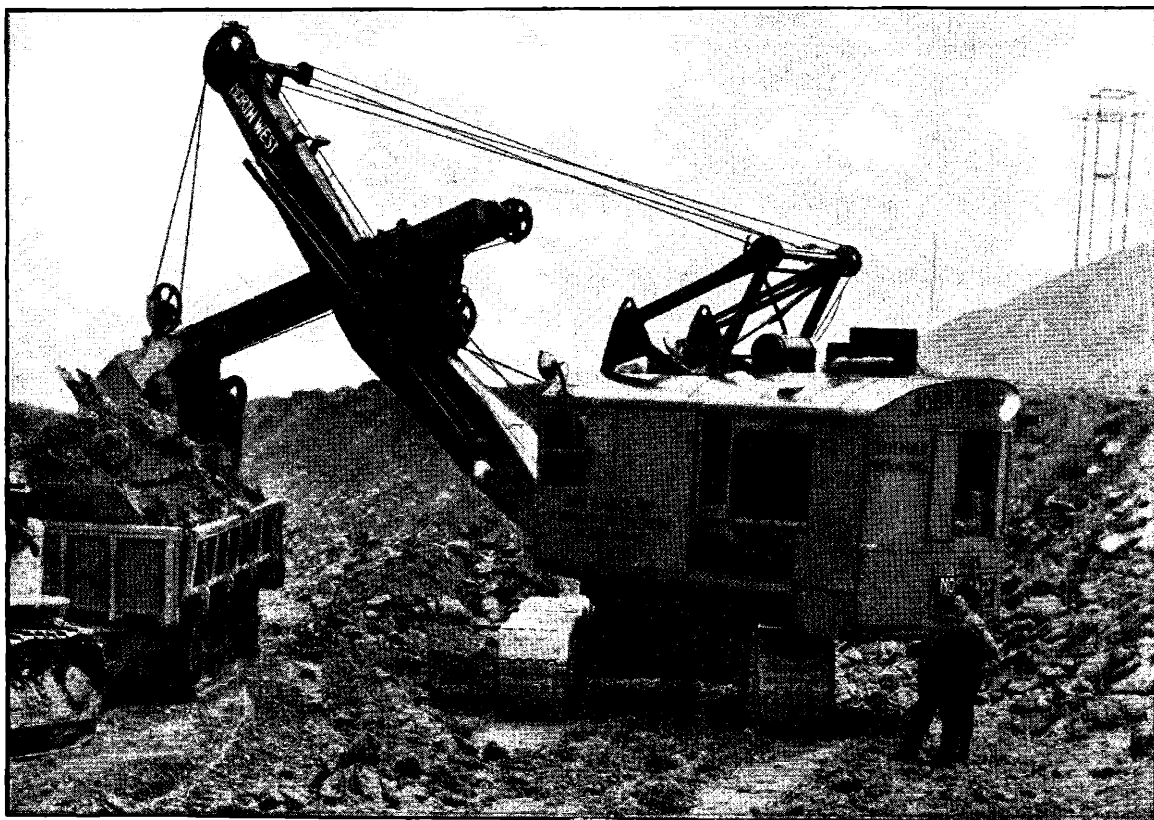
*The Marsman Trading Staff at Baguio. F. Ream, manager, is in the center.*





# RUGGEDNESS and QUALITY

*Combined*



GASOLINE  
ELECTRIC  
DIESEL  
OIL

## NORTHWEST

*Built  
in a range  
of 18 SIZES  
½ yd. capacity  
and  
Larger*

*Shovels • Cranes • Draglines • Pullshovels • Skimmers*

**NORTHWEST ENGINEERING COMPANY**

*World's Largest Exclusive Builders of  
Gasoline, Oil, Diesel or Electric Pow-  
ered Shovels, Cranes and Draglines*

*Philippine Agents*

## Marsman Trading Corporation

20, 1937, with a paid in capital of ₱1,740,590.

Operations have been outstandingly successful. The corporation took steps to broaden its activities in the import line.

Marsman Trading now has agencies representing the outstanding manufacturers of the United States and England. The operation consists of branches carrying complete stocks at Manila, Baguio, Paracale, and Surigao. Five stores, with refrigeration equipment for meat, fruit, vegetables, et cetera, are operated in the mining camps (Itogon, Suyoc, United Paracale, and San Mauricio (2) ).

A Diesel fuel oil installation is maintained at Mambulao where two tanks totaling 2,500 tons capacity and mooring space for ocean-going tankers is available. The company has transfer oil and gasoline tanks in Baguio of 50-ton capacity each, and operates the Socomy Baguio service station.

Shortly after the organization of Marsman Trading Corporation, in August, 1937, it became evident that an even wider representation of quality machinery and equipment products would be advisable in order that the new organization might better serve its clientele, not only in the Philippine Mining Industry, but also in the con-

struction and mercantile fields. Accordingly, it was decided that it would be to the best interests of the corporation to send one of the executives abroad to make a thorough investigation of possible new connections, as well as to renew the contacts which the organization had enjoyed since its inception.

George H. Evans, vice-president of Marsman Trading, was chosen to make the trip. He left Manila by Clipper late in May, 1938, after the Marsman Trading directors had worked with him in the preparation of an itinerary which would be of most benefit to the company. During the course of his travels before his return to the Philippines, he covered some 35,000 miles visited half a dozen countries, and established many valuable contacts.

Mr. Evans went first to San Francisco, thence by air to New York, on to Boston, across country to St. Louis, Chicago, Cleveland, Pittsburgh, and Philadelphia. Then he returned to New York to catch a boat for London. After visiting the various Marsman connections in England, he went on to Amsterdam and Hamburg before returning to the United States. The return Westward across the States took him through Denver, Salt Lake City, Seattle, Los Angeles and San Francisco,

*The Marsman Trading display rooms in Baguio.*



where he boarded the Clipper for the return trip to Manila.

Important calls on his trip were made at the offices and plants of the Atlas Power Company, Great Western Chemical Co., Crucible Steel Co. of America, Justrite Manufacturing Co., Goodman Manufacturing Company (Mancha), Dixon Valve and Coupling Co., Denver Fire Clay Company, The Mace Company, Colorado Iron Works, Wilfley Pump Company, EIMCO, Filson, B. F. Macdonald American Potash Company, the Cameron Pump Division of Ingersoll-Rand, all in the United

States; W. H. Allen Sons Ltd. and Streamline Filters in England.

New contacts made were with Spang Chalfant, Inc.; Great Lakes Steel Corp.; Koehler Manufacturing Co.; Simplex Wire & Cable Co.; The Medart Company; Corrugated Sheet Steel Piling Co.; Briggs & Stratton Corp.; D. O. James Manufacturing Co.; American Brattice Co.; Reid, Murdock Co.; Wellman Engineering Co.; Superior Zinc Corp.; Layne, Bowler & Co.; Sears International and Sears Roebuck; Vulcan Iron Works; Everseal Manufacturing Co.; Sutorbilt Corp.



*Clerical staff, Baguio branch of Marsman Trading.*

# MEDART

MEANS EVERYTHING IN  
POWER TRANSMISSION and SPECIAL EQUIPMENT

●  
GEARS and SPROCKETS  
●

Since 1879

THE MEDART COMPANY  
St. Louis, Mo.

P. I. Agents: MARSMAN TRADING CORP.

# ANTIMONY — WOLFRAM

REGULUS guaranteed 99% min.—CRUDE guaranteed 70% min.—  
WHITE OXIDE 98-99 soluble

## MARSMAN HONGKONG CHINA LTD., HONGKONG

European Agents:—THE HOLLYBUSH TRUST LTD.

149 Leadenhall Street, London, E.C.3

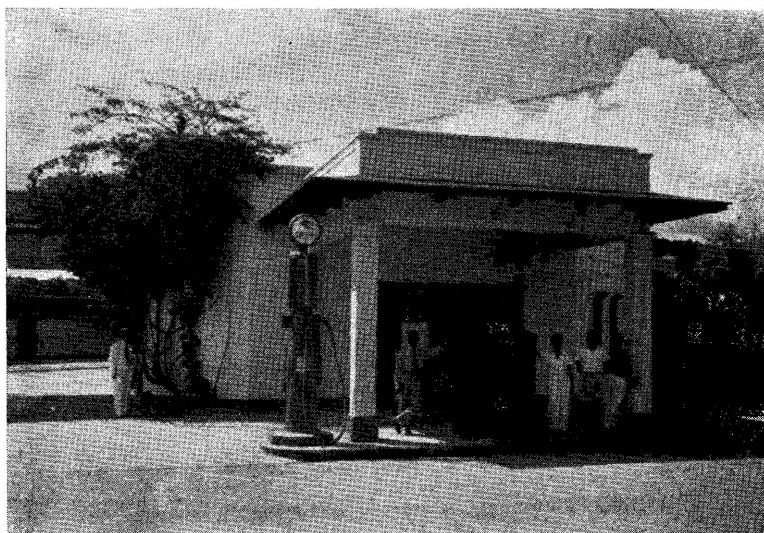
Telephone: Avenue 5393

Telegrams: Hollyma, London

CHROME  
INQUIRE:

## MARSMAN TRADING CORPORATION

*Socony filling station in Baguio,  
operated by Marsman Trading.*



*One corner of the Surigao  
branch store of Marsman Trading.*





# MANILA MACHINERY & SUPPLY CO.

INCORPORATED  
675-681 DASMARIÑAS  
—MANILA—



## Exclusive Philippine Agents

FOR THE FOLLOWING MANUFACTURERS:

**JEFFREY MFG. CO.**, Columbus,  
Ohio.

Conveying and Mill Equipment

**TRAYLOR ENG. & MFG. CO.**,  
Allentown, Pa.

Crushing and Cement Equip-  
ment

**WALWORTH INTERNATIONAL  
CO.**, New York City, N.Y.

Valves, Fittings, Tools

**RUSTON & HORNSBY, LTD.**,  
Lincoln, England

Diesel Engines, Diesel Loco-  
motives

**BUCYRUS ERIE CO.**, South Mil-  
waukee, Wisconsin.

Gold Dredges & Excavating  
Equipment

**IDEAL ELECTRIC & MFG. CO.**,  
Mansfield, Ohio.

Alternators, Generators, Mo-  
tors.

**MINE SAFETY APPLIANCES  
CORP.**, Pittsburgh, Pa.

Complete Mine Safety Equip-  
ment, Miner's Protective  
Hats.

**KIMBALL KROGH PUMP CO.**,  
San Francisco, Calif.

Pumps for all Mill Purposes.

**THE A. LIETZ CO.**, San Fran-  
cisco, Calif.

Complete Surveying Equip-  
ment.

**E. H. EDWARDS CO.**, San Fran-  
cisco, Calif.

High Grade Wire Rope.

**WRIGHT MFG. CO.**, 230 Park  
Ave., New York City.

*Division of American Chain and  
Cable Co., Inc.*

Hoists, Trolleys' Cranes.

**SULLIVAN MACHINERY CO.**,  
New York, N. Y.

Hoists, Air Compressors, Rock  
Drills, Etc.

**OWEN-DYNETO CORP.**  
New York, N.Y.

U.S.L. Protected Arc Electric  
Welders



By Ralph Keeler

## MINE MANAGEMENT IN THE PHILIPPINES

The organization which J. H. Marsman has built for the management of mining properties in the Philippines is based on the principle of coordinating the services of many specialists through committees. It is organized for the utmost efficiency and economy, and smoothly-run operations at the Marsman mining properties indicate the success of the system.

The foundation of any mining company, of course, is the body of shareholders. The shareholders meet once a year, and elect directors, who in turn elect their officers—president, vice-presidents, secretary, and treasurer.

The administrative board in Marsman & Company is the Executive Committee, composed of six members appointed by the Board to carry out the policies of the Company.

A Finance Committee consisting of experienced financiers control the financial affairs.

Technical details of mine operation are determined by the Boards of Engineers, which consists of 7 members, each an engineer of long experience in

his particular line, whether it be mining, milling, smelting, dredging, geology or drilling. As new problems arise, such as plant construction, new underground development campaign, et cetera, they are discussed at length by this board. After a plan of operation has been drawn up and approved, it is turned over to the Division Managers (at present there are two, Northern and Southern Division Managers).

The Division Managers in turn delegate the details to the General Superintendents of the various units.

Each mining company is under the active administration of the General Superintendent and his staff. Experienced mining engineers, most of them graduates of one of the leading mining schools of the United States, are chosen for these staff positions. Each man is thoroughly investigated before he is engaged, and each has years of experience to his credit.

A feature of the Marsman organization which is outstanding is the accounting system which has been built up during the past five years. Each mining company uses the same details



of accounting, with a mine accountant stationed at each property. Daily records are sent to the main office in Manila, for careful study and recording. Through these records, which the division managers, the mine management committee, and the board of engineers go over daily, the progress of each mine is noted.

Purchasing for all of the mining companies is handled through the Manila office, and substantial economies are effected by large quantity buying. The isolated location of practically all of the mining companies makes it essential to keep comparatively large stocks of mining supplies at the mine, as well as the necessities of life for the staff

## **Close Human Relationships**

*—exist between this bank and the people of this Community.*

**T**HERE are no dividing lines between the interests and welfare of this bank and the interests and welfare of its neighbors, whether or not they are customers.

Our depositors who entrust their funds to our keeping represent a broad average of the men and women of the Community. Our borrowers are men and women engaged in active business enterprises which, we feel, entitle them to the use of the bank's credit resources created with the aid of our depositors' money.

This bank, as a center of the financial interests of these men and women, makes possible interchange of practical helpfulness.

**PEOPLE'S BANK AND TRUST COMPANY**

Manila, Philippines

Four Provincial Branches at your Service

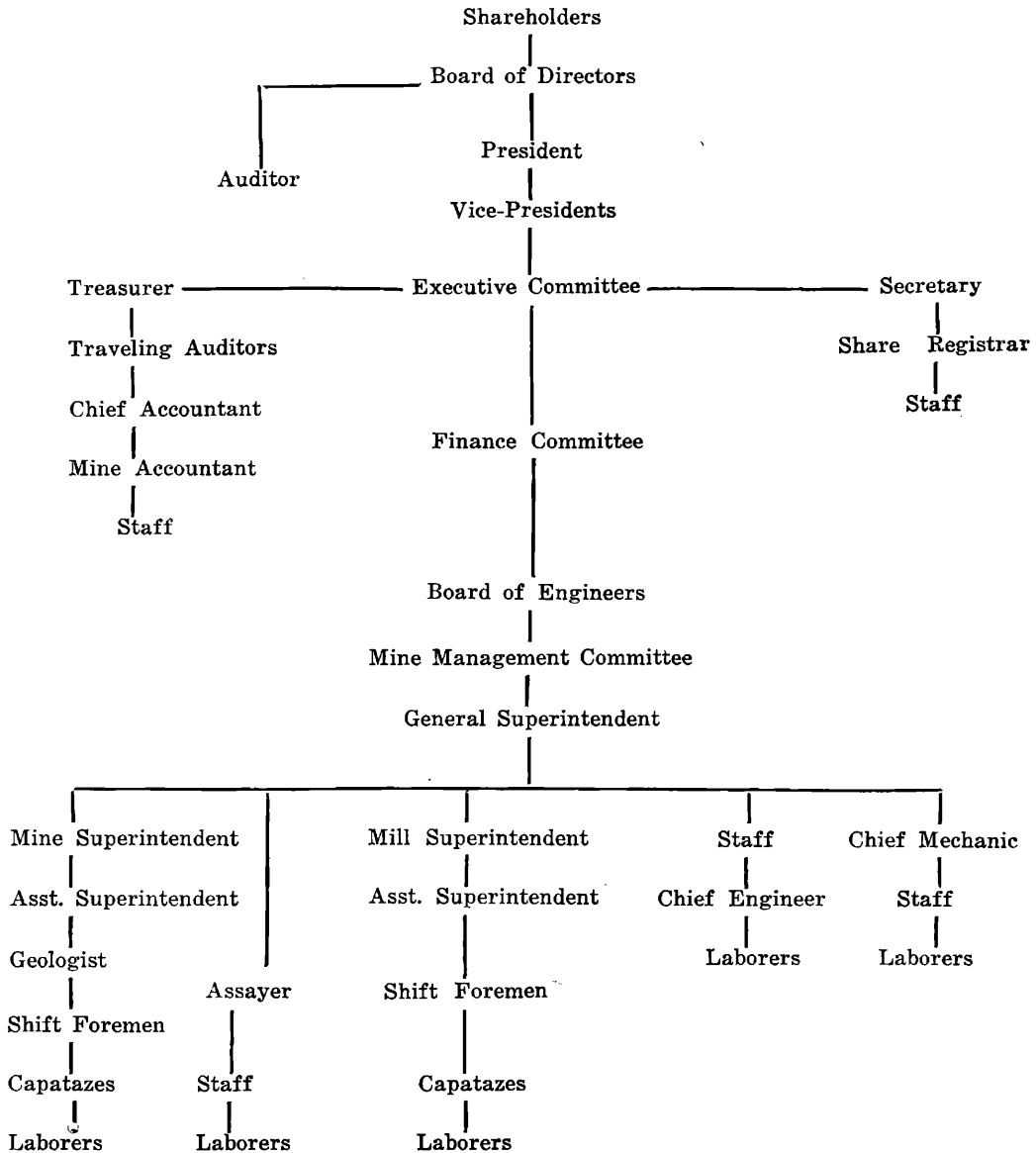
Baguio, Mountain Province  
Tarlac, Tarlac—San Pablo, Laguna  
San Fernando, Pampanga



members, the laborers, and the families of all employees. Every mining camp has a complete cold store, where fresh meat, fish, vegetables, and dairy products are always available. Much improved transportation facilities in the Philippines in recent years, by air, train, water, and road, make it possible to send supplies from Manila almost daily—bad weather during the rainy season, however, must be foreseen and

care taken that the warehouses are sufficiently stocked to keep the camp running efficiently.

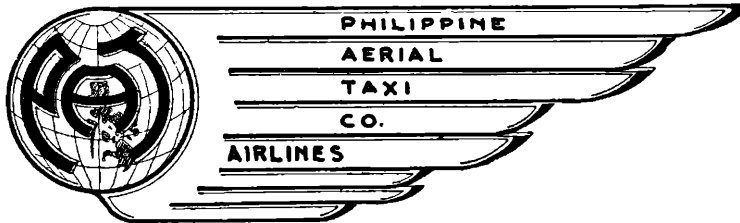
The principal work of the secretary is the handling of stock transfers and of the general correspondence of the company. The mining industry everywhere is, of course, closely linked to the share markets; when the market is active it keeps the secretary and his staff busy.



SAFETY

See the Philippines  
from the air

COMFORT



Over One Million Miles Safely Flown

*Serving the Mining Districts*

**BAGUIO** - DAILY SERVICE -

Leave Manila . . . . .	6:30 a.m.
Arrive Baguio . . . . .	7:30 "
Leave Baguio . . . . .	7:40 "
Arrive Manila . . . . .	8:40 "

ONE WAY . . . . . P25  
ROUND TRIP . . . . . P45

**PARACALE** -

Tues.	{	leave Manila . . . . .	6:45 a.m.
Thurs.		arrive Paracale . . . . .	8:00 a.m.
Sat.		leave Paracale . . . . .	8:05 a.m.
		arrive Naga . . . . .	8:40 a.m.

Manila-Paracale, one way P35, round trip P70  
 Manila-Naga, one way P50, round trip P100  
 Manila-Legaspi, one way P65, round trip P130  
 Paracale-Legaspi, one way P30, round trip P60  
 Paracale-Naga, one way P15, round trip P30  
 Naga-Legaspi, one way P15, round trip P30

**PHILIPPINE AERIAL TAXI CO.**

J. H. MARSMAN, President

RESERVATIONS

Mackay Radio	Tel. 2-43-45
Manila Hotel	" 2-20-22
Bay View Hotel	" 2-43-84
Grace Park Airport	" 2-43-30
Baguio	Royal Garage
Paracale	Marsman & Co. (H. Maclean)

SPEED

SERVICE



## ITOGON MINING COMPANY

---

During January the Itogon plant treated 29,266 tons of ore from which ₱346,242.52 was recovered. Average recovery amounted to ₱11.83 per ton and extraction was 84.44 per cent.

Development advance during the month under review amounted to 5,535 feet. Capital development totalled 3,042 feet of which 515 feet were in ore. Operating development accounted for 2,493 feet with 1,226 feet in ore.

Satisfactory progress was made in reopening old workings on both the three and zero levels. Several new stope preparations are underway on the three level.

The 875 level Sesame counterdrive was advanced 520 feet in January, and is now about 320 feet from the projection of the Balatoc 251 vein.

Drifts on the Taka vein from the main 875 level crosscut were started during the month. The east drift was advanced 25 feet while the west advanced 23 feet. Both drifts uncovered better than average ore.

The 700 level station in the Sesame 523 shaft was 90 per cent completed at the end of the month. The shaft timbering to the 800 level will be continued as soon as the work on the station is completed.

Development work from this shaft on the 550 and 600 levels was up to expectations.

The installation of the Allis-Chalmers hoist at the Sesame 523 shaft should be completed during the current month.

Operations in the mine in general were normal.

### *Mill*

All mill units worked satisfactorily during the month although a combination of hard and oxidized ore, together

## COCO GROVE, INC.

---

The two dredges at Coco Grove handled 351,545 cubic yards of gravel during January, from which ₱142,587.58 was recovered. Total production was approximately ₱16,000 higher than that of the previous month.

The dredge Mary Angus handled 170,840 cubic yards for an output of ₱66,221.74. Total area dredged was 90,995 square feet to an average depth of 50.6 feet.

The dredge Anne Petronella handled 180,705 cubic yards of gravel and recovered ₱76,365.84 worth of bullion. This dredge covered 84,060 square feet to an average depth of 58 feet.

In general, the dredges operated steadily and without any serious repairs or overhaul necessary during January. Some trouble developed with the upper tumbler on the Mary Angus, the repairs of which resulted in some 52 hours of lost time.

The Mary Angus is now making the turn to the east and heading again for the shoreline, which should be reached by the middle of May. The Anne Petronella will be operated in the Paracale River area during February and is expected to cross the provincial bridge about the middle of March.

Paracale Bay was rough during January as the northeast monsoon was still in full force, but weather conditions in general were better than the previous month.

---

with muddy water from the mine, caused higher tails.

Routine replacements in the fine crushing unit consisted of a new bowl liner, new head and foot sprockets and chain, and 60 buckets for the elevator.

### *General*

Production was improved during the month considering the low tonnage milled.

# Boyles Bros. Drilling (Philippine) Co.

MARSMAN BUILDING

Manila

## Diamond Drilling Specialists

**We Carry In Stock**

**A Complete Line of Diamond Drills**

**Diamond Drilling Supplies**

**Bortz**

**Carbon**

**Ready-Set Bits**

**When contemplating diamond drilling**

**Consult us**

**No Job Too Small—No Job Too Large**

**Tel. 2-32-32**



**Head Office  
and Factory:  
Boyles Bros.  
Drilling Co., Ltd.  
Vancouver, B. C.**

**Branch:  
Boyles Bros.  
Drilling Co., Inc.  
Salt Lake City  
U. S. A.**

## UNITED PARACALE MINING COMPANY

United Paracale continued to set new monthly production records in January with a gross operating revenue of ₱238,355.11, up ₱5,000 from December which was also a record month. The mill treated 9,426 tons of ore for an average recovery of ₱25.286 per ton. Extraction was 92.36 per cent.

### *Development*

Total advance for the month amounted to 1,296 feet. Capital development accounted for 1,059 feet with 78 feet in ore. Operating advance amounted to 237 feet with 81 feet in ore.

### *Mine*

Drift 207 south, San Antonio 200 level, was advanced 71 feet along the vein. On level 400, 4 south crosscut east was advanced 294 feet through granite and cut several narrow stringers, none of which gave economic values.

Drift 401 north, Baluarte 400 level, was advanced 78 feet along the vein in high grade ore. Drift 501 north on the 525 level, was advanced 79 feet along the vein in commercial grade ore.

Sinking operations were resumed in the Haliguig Bato shaft with 17 feet of advance reported. The shaft is now down 234 feet below the Zero level.

The Big Bear crosscut was advanced 155 feet through granite. The Malaguit crosscut west advanced 58 feet through soft, altered granite.

### *Mill*

Operations in the mill were satisfactory during the month. The grate and breast liners were changed in No. 2 mill. A complete liner change was made in No. 1 mill, and both No. 1 Tel-smith crusher and the Dorr bowl classifier were completely overhauled.

## SAN MAURICIO MINING COMPANY

San Mauricio established a new all-time monthly production record in January when the mill treated 9,453 tons of ore for ₱504,168.56. Average recovery was ₱53.33 per ton and extraction was 93.91 per cent. The mill continues to treat the highest grade ore mined by any operating company in the Philippines.

Total development advance amounted to 1,686 feet. Capital advance accounted for 1,276 feet with 304 feet in ore. Operating development totalled 410 feet with 217 feet in ore. January development resulted in a further increase in ore reserves.

In the San Mauricio mine, Tacoma No. 1 north drift was advanced 45 feet on the 200 level in good grade ore. Tacoma No. 3 north drift was also advanced 45 feet in ore. Tacoma No. 3 hangingwall drift 2135 north on the 300 level was advanced 81 feet in better than mine average ore.

Tacoma No. 3 north drift on the 400 level advanced 127 feet in commercial grade ore. This drift on the 500 level was advanced 162 feet in commercial grade ore and a crosscut is now being driven to open the full width of the vein.

In the Santa Ana mine, the 425 level north drift was advanced 91 feet while the south drift advanced 42 feet, both advances uncovered good grade ore.

### *General*

Stoping operations were normal during the month under review and all stopes were in good condition. Repair work was continued in the 200 level drainage adit and the 200 level main drift.

### *Mill*

Operations were normal during the month. A mill office was constructed adjoining the mill building.

The San Mauricio shaft new headframe was completed during the month and frame was dismantled.

## SUYOC CONSOLIDATED MINING COMPANY

January's production at Suyoc Consolidated was ₱141,337.32 from the treatment of 6,363 tons of ore. Average recovery was ₱22.22 per ton and extraction was 86.34 per cent.

Total development advance during the month amounted to 1,758 feet of which 1,089 feet were in capital and 669 feet in operating development. Of the capital advance 283 feet were in ore. Operating advance resulted in 126 feet in ore.

Sinking was continued in No. 1 shaft during January and 54 feet of advance was made. This shaft is 20 feet above the 2200 level.

Crosscut 2201-S was advanced 45 feet. A turnout was made for the 2215 crosscut. An advance of 125 feet was made in crosscut 2201-N. This heading will be stopped temporarily and an orepass-ventilation raise started to connect with the 2000 level.

Crosscut 2001-N continued in the altered andesite zone which carries some quartz and sulphides. Some low grade ore was developed.

Intermediate headings 1900 and 1901 were pushed for stope preparation during the month. Some average ore was developed in 19242 intermediate north and south, 19242 north, 19130 intermediate north and south. Stoping will be started during the current month.

Crosscut 1862 east cut the projection of the 16154 north veins, and showed commercial ore. Drifting on the vein has been started. Crosscut 1848 west cut a two-foot quartz vein of low grade ore. Drifting to the south was started. Crosscut 1856 east cut a two-foot gouge zone with some quartz. This is probably the southern extension of the vein cut in 1862 crosscut east. Values were erratic.

Crosscut 16154 north has been temporarily stopped to await development of the vein on 1800. Crosscut 1654 east was started.

Winze 1662 was advanced 40 feet in ore during the month. An intermediate level will be started at 60 feet from the 1600 level. Winze 14254 south ad-

## PHILIPPINE SMELTING COMPANY

The Smelter treated 1,836.66 tons of material during January, of which 141.64 tons were high grade ore.

Operations were normal during the month. All material on hand was smelted by January 25, when the smelter was shut down temporarily for periodical repairs. During the month 90.4 tons of smelter products were produced, containing 8,273.52 ounces of gold, 15,515.35 ounces of silver, 76,812 pounds of copper. The ratio of concentration was 14.73 to 1.

## MOUNTAIN MINES

Preliminary work at Mountain Mines is well under way, under the supervision of Frank Erno. Grass houses for the laborers have been completed, and foundations for a combination mess house, office, and bodega building completed. A prospect tunnel has been started, and was advanced 26 feet during the month. The portal of the tunnel was located in the middle of the outcrop zone, and the tunnel will be advanced 100 feet, upon which crosscuts to the east and west will be driven to explore the formation. Work on another promising outcrop will be started during February.

R. P. Barnes has been engaged in the capacity of accountant and also to assist in assaying and engineering work.

While continuous rains have somewhat hampered operations to date, better headway will be made when the temporary construction program is completed, and with the coming of dry weather.

vanced 46 feet during the month and resulted in nine feet of ore.

The headframe on winze 1350 was completed and sinking will be started in February.

Mine operations were normal during the period under review, and the mill operated steadily and satisfactorily.

## Several Marsman Staff Changes

During the past month there have been several changes and considerable movement in the Marsman staff organization.

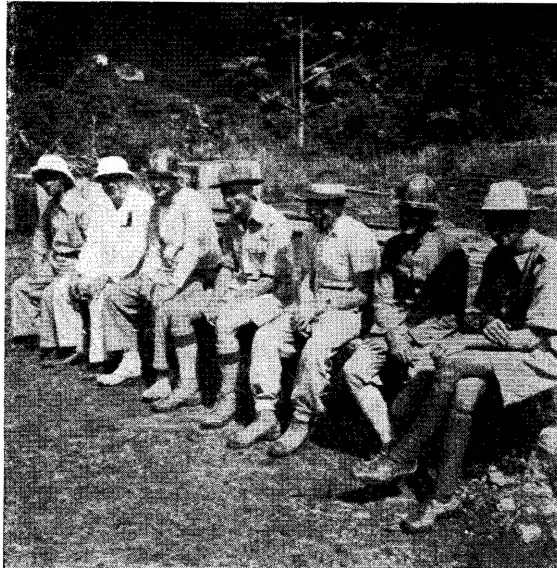
Mr. Marsman made a business trip to Hong-kong by Clipper about the middle of the month, returning to Manila on February 20.

H. G. Iverson, well-known metallurgist on the staff of the Marsman & Co. Inc., has been appointed resident engineer for the Twin Rivers operation recently taken

over by the company. He is now supervising repair work at that plant.

L. M. Robinson, general superintendent at Suyoc Consolidated for the

past few years now occupies the same position at Itogon, vice Warren Gilkison who has left for the United States.



*The Marsman staff at Mangani (Sumatra)*

*Left to right: A. Flores, surveyor; V. W. E. Loth, master mechanic; A. M. Dixon, shaft foreman; L. W. Buchanan, engineer-geologist; K. Wrozyna, mine shifter; A. Klotzke, mine shifter; F. A. Hanedos, electrician. Not in the picture is J. E. Atkins, consulting engineer.*

C. C. Heinrich, former mine superintendent at Suyoc, has been promoted to the position of general superintendent.

Frank Erno, field engineer, is in charge of development work at Mountain Mines, Inc., as resident engineer.

R. H. Canon, general superintendent of United Paracale

and assistant manager of the Southern Division of Marsman & Company, left for the United States late in February for a vacation trip to the United States.

## I. BECK, INC.

Provided Miners Since 1898  
Retail & Wholesale

Wearing Apparel. Haberdashery for Men, Women & Children.  
Big Line of Household goods. Radios. Phonographs. Beds. Toys.

Send for Catalogue

For Reference ask any old Mining Man



# MARSMAN AND COMPANY, INC.

## Producing Mines

<i>Name</i>	<i>Location</i>	<i>Type Property</i>	<i>Plant Capacity Daily</i>	<i>General Superintendent</i>
Itogon Mining Company	27 km S. of Baguio	Gold Lode	1,000 tons	L. M. Robinson
Suyoc Consolidated	98 km N. of Baguio	Gold Lode	200 "	C. C. Heinrich
United Paracale	Paracale, Camarines Norte, 200 km Sw of Manila	Gold Lode	300 "	R. H. Canon
San Mauricio	15 km N. of Paracale	Gold Lode	300 "	H. L. Barr
Coco Grove	Paracale	Gold Placer	13,000 cubic yards	F. A. Nowacki
Royal Paracale	Masbate	Gold Lode	100 tons	James Hopkins

## Properties under Development

<i>Name</i>	<i>Location</i>	<i>Type Property</i>	<i>In Charge</i>
Tuba Project	Tayabas	Gold Lode	L. H. Hinckley
Mountain Mines	Kalinga	Gold Lode	Frank Erno

## LABOR

Attempts are being made by professional agitators to stir up labor in the Philippines. It was but natural that this class of trouble-makers would turn their attention to the mining industry. So far the activities of this small group have resulted only in a few strikes, all of which have been abandoned within a comparatively short time.

It is a peculiar characteristic of such a situation that it often leads the laborers to be swept away by the loud arguments of the professional strike-makers, and to be coerced into actions that in their sober moments they would not consider.

For example: a professional agitator went to one district in the Philippines, looked over the field, and announced publicly that he was going to start a strike in each of the mines in the area. He gave the order in which these strikes would occur; so far his predictions have been accurate.

The laborers in Philippine mining camps received higher pay, more benefits, and have better working conditions than do the workers in any other industry. When modern mining was started here, a few years ago, there was but little trained labor. The operators engaged unskilled workmen,

*(Please turn to next page)*

	<i>Page</i>
Two New Gold Output Records . . . . .	1
Marsman Takes Over Royal Paracale . . . . .	1-2
Marsman Trading Corporation . . . . .	3-6
<b>HISTORY AND GROWTH</b>	
Mining For The Investor . . . . .	9-11
<b>MINE MANAGEMENT IN THE PHILIPPINES</b>	
Itoyon Mining Company . . . . .	13
Coco Grove, Inc. . . . .	13
United Paracale Mining Company . . . . .	15
San Mauricio Mining Company . . . . .	15
Suyoc Consolidated Mining Company . . . . .	16
Philippine Smelting Company . . . . .	16
Mountain Mines . . . . .	16
Several Marsman Staff Changes . . . . .	17
Marsman Managed Mines . . . . .	18
Editorial—Labor . . . . .	19-20

## THE MARSMAN MAGAZINE

*Published each month for Marsman & Company, Inc., Marsman Building, Port Area, Manila, Philippines. P. O. Box 297*

*The magazine is sent to all stockholders of Marsman managed properties and to all staff members of the companies associated with the Marsman interests.*

**NOTE:** *All ore values, bullion figures, etc., given in this magazine are expressed in pesos based on gold at \$35.00 an ounce and silver at the market price. Figures given in monthly reports are based on mine assays, and may differ to some extent from final mint or smelter returns.*

**SUBSCRIPTION PRICE, P5 A YEAR.**

**RALPH KEELER, Editor and Business Manager**

taught them their jobs, built comfortable and sanitary homes for them, provided them with every reasonable facility for happy living. Hospitals, schools, playgrounds, cines, roads, improvements of all kinds, have dotted the path of mining in these Islands.

Through all this the mining laborers have been contented. They have been brought to a higher scale of living than ever before, their families are better provided for than are their relatives in other industries, and, all in all, their lot has been good.

It is unfortunate indeed that a few radicals can, for the sake of the cash which they collect from each laborer whom they persuade to join their so-

called labor unions, disturb even slightly the smooth progress of the mining industry. In most cases the strikers, after they have had time to think things over, admit that they joined a walkout because of the excitement, because of the action of some one else, or for any reason in the world except one of personal dissatisfaction.

President Quezon has said that labor should take the proper legal steps in case of discontent. It is hoped that the government will see to it that the activities of the handful of organizers are kept strictly within legal bounds, and that they are not permitted to continue their flagrant abuse of the confidence of the laborers.

---

---

E. E. Elser, Inc.

All Forms of Insurance

Telephone 2-24-28

P. O. Box 598

MANILA

# MARSMAN TRADING CORPORATION

offers efficient service and tested, quality products to the  
Philippine Mining Industry with complete stocks of

## MINE AND MILL SUPPLIES

<p>Assay Equipment &amp; Supplies Heavy Chemicals Bone Ash Borax Glass Litharge Pine Oil Xanthates Zinc Dust Dynamite, Caps, Fuse Drill Steel &amp; Detach- able Bits Steel Balls Mine Cars Rails &amp; Accessories Carbide Lamps Safety Hats Waterproof Clothing</p>	<p><b>Carbide, Picks, Shovels, Wire Rope, Hose and Hose Couplings, Pipe and Fittings, Cement, Galvan- ized Iron, Gaso- line, Oils, Greas- es, and all other supplies required by the Mining In- dustry.</b></p>	<p>Agitators Akins Classifiers Ball Mills Crushers Diesel Engines Flotation Machines Magnetic Pulleys Mine Hoists  Pumps     Cameron     Wilfley  Reagent Feeders Redwood Tanks Thickeners Streamline Oil Filters</p>

BAGUIO

MANILA

PARACALE



*The* **KEY**  
*to Correct Lubrication*

Correct Lubrication means economy in many ways—fewer shut-downs, greater engine efficiency, minimum oil consumption, reduced depreciation. The key to Correct Lubrication is the Standard-Vacuum recommendation, made after a careful, expert engineering study of your plant and its lubrication requirements. Our experience of 70 years in the manufacture and application of lubricants is at your service.



**STANDARD-VACUUM OIL COMPANY**

Specialists in the Manufacture of High-Grade Lubricants and Greases.