

## ITOGON MINING COMPANY

A new all-time monthly production and tonnage record was made at Itogon during September, when ₱320,319.10 was produced from 30,438 tons of ore. The month saw the tonnage increased to well over 1,000 tons a day, while the highest amount milled during any day was 1,140 tons. The mill handled the tonnage quite satisfactorily with an extraction of 86.75%.

Capital development totalled 1,828 feet, of which 1,099 feet were in ore and 729 feet in waste. Operating development advance was 1,338 feet, of which 1,187 feet were in ore and 151 feet in waste. Ore mined from stopes amounted to 21,948 tons.

will then be further advanced to connect to the main shaft.

The installation of the Washington Iron Works hoist in the zero level Sesame has been completed, as was the water flue extension. During September one 35-room barrio bunkhouse was finished, while a similar one is about 60% completed.

At the higher tonnage, it is interesting to note that mining and milling costs are expected to decrease considerably; the present cost approximates the estimated cost at the beginning of the year.

J. Wynne and J. A. Icazbalceta have recently joined the staff as mine shift bosses.



*Mr. Marsman (center) and Mr. Kerr (left) stopped off in Bandoeng en route to London by air. Here they are shown with Mr. Greenan, who is now stationed in the Netherlands East Indies temporarily, and Mr. Van Steenberg (standing behind the group). This picture was sent to Manila by Mr. Van Steenberg, and reached the Philippines a few days before the news of his tragic death in an airplane crash near Palembang. He left Bandoeng some time after the Marsman party, planning to join them in Amsterdam.*

During the month a four-machine drill carriage and Butler loader was put into operation on the 875 drain tunnel in order to speed up the advance. This crosscut is expected to cut the Sesame vein within several months and

The expansion program at Itogon, started early this year, was completed in September with the doubling of the capacity of the plant to a 1,000-ton-per-day basis, after long and costly

(Continued on page 6)

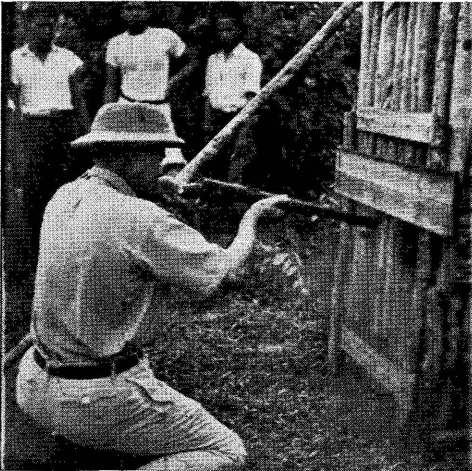


## Trapping A Tiger

*The strip on the left, sent to the Marsman Magazine by V. V. Clark, of the geological and field engineering staff, shows graphically the execution of a tiger in a deserted military camp 14 kilometers from Taloek, in the Netherlands East Indies.*

*The execution of the tiger in the trap might at first thought seem hardly sporting, Mr. Clark wrote, but this particular cat was becoming bolder and bolder around the residences. Stealing pet monkeys was his forte, and those in charge were somewhat of the idea that he might have tried a man for a change of diet.*

*The animal was a beautiful specimen, as the snapshots show—and might well have been a dangerous one! The life of a mining engineer has its hazards, wouldn't you say?*



## Wide Mining . . .

*(Continued from page 14)*

State School of Mining, University of Arizona, South Dakota State School of Mines, Virginia City School of Mines, University of Minnesota, University of Wyoming, Cambridge University, England; Wisconsin Mining School, University of Illinois, Royal Naval Academy of Norway, and University of Wisconsin have all contributed one.

Almost half of these men have had experience in the United States; approximately one-eighth in Mexico and one sixteenth in South America. The work of the rest took them to areas divided between Canada, Alaska, China, Australia, Scotland, Korea, Manchuria and Africa.



## Itogon Mining

*(Continued from page 2)*

delays due to labor and shipping strikes in the United States. The large expenditures involved consequently could not be met from production as had been anticipated. The directors having under consideration the proposed payment of an interim dividend at this time have concluded that sound business prudence should deter an outlay of cash for dividends when expenses for these capital investments have not been liquidated. Accordingly, the matter was deferred.

