

Several Marsman Staff Changes

During the past month there have been several changes and considerable movement in the Marsman staff organization.

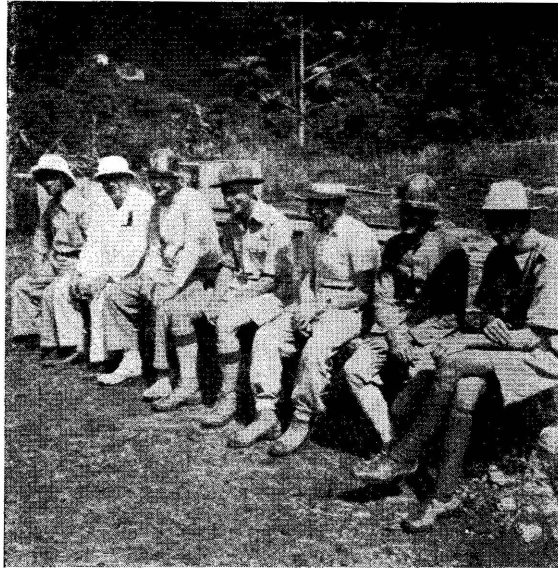
Mr. Marsman made a business trip to Hong-kong by Clipper about the middle of the month, returning to Manila on February 20.

H. G. Iverson, well-known metallurgist on the staff of the Marsman & Co. Inc., has been appointed resident engineer for the Twin Rivers operation recently taken

over by the company. He is now supervising repair work at that plant.

L. M. Robinson, general superintendent at Suyoc Consolidated for the

past few years now occupies the same position at Itogon, vice Warren Gilkison who has left for the United States.



The Marsman staff at Mangani (Sumatra)

Left to right: A. Flores, surveyor; V. W. E. Loth, master mechanic; A. M. Dixon, shaft foreman; L. W. Buchanan, engineer-geologist; X. Wrozyna, mine shifter; A. Klotzke, mine shifter; F. A. Hanedos, electrician. Not in the picture is J. E. Atkins, consulting engineer.

C. C. Heinrich, former mine superintendent at Suyoc, has been promoted to the position of general superintendent.

Frank Erno, field engineer, is in charge of development work at Mountain Mines, Inc., as resident engineer.

R. H. Canon, general superintendent of United Paracale

and assistant manager of the Southern Division of Marsman & Company, left for the United States late in February for a vacation trip to the United States.

I. BECK, INC.

Provided Miners Since 1898
Retail & Wholesale

Wearing Apparel. Haberdashery for Men, Women & Children.
Big Line of Household goods. Radios. Phonographs. Beds. Toys.

Send for Catalogue

For Reference ask any old Mining Man