

FERTILIZERS

SULPHATE OF AMMONIA
SUPERPHOSPHATES
SULPHATE OF POTASH

MENZI & CO., INC.

Iloilo

MANILA

Cebu

J. M. MENZI Bldg.

Corner Reina Regente & Soler Streets

Tel. 4-79-29

Protect your Homes from
FIRE
With

Albi-R

the New Fire Retardant Coating
Material

- ★ Excellent adherence and bonding qualities to insulation boards, lumber, and other inflammable building materials.
- ★ Albi-"R" can be overcoated with any decorative or industrial oil paint, enamel, or lacquer, and retain fire protective quality.
- ★ Lasting fire protection—effective after 12 years weathering.
- ★ APPROVED by U. S. Underwriters' Laboratories.

Exclusive Distributors

PHILIPPINE ENGINEERING CORPORATION

936 RAON, MANILA

TEL. 2-98-71

Text of Import Control Rules

(Directions issued by Secretary of Commerce and Industry Cornelio Balmaceda as Chairman of the Import Control Board, to importers who are affected by Executive Order No. 193.)

1. Importers concerned should register at once in the Import Control Office, 210 General Solano, Manila, bringing with them their registration papers either in the Securities and Exchange Commission or in the Bureau of Commerce, business license and tax clearance certificate. Each importer should fill out Form IC-6 of the Import Control Office entitled "Importer's Information Sheet." Import values must be c.i.f., Philippine ports. Quantity of commodities need not be stated.

2. After accomplishing the "Importer's Information Sheet," it should be submitted to the Import Control Office for approval. A registration certificate will then be issued to the importer. This certificate is his authority to apply for quota allocation and import license.

3. Based on the figures submitted by the importer in Form IC-6, the Import Control Office will give him a tentative import quota.

4. To obtain final import quota, the importer must submit invoices or documentary proofs to support the value of his importations as submitted in Form IC-6.

5. To apply for import license, fill out Form IC-1, specifying the kinds of articles to be imported, value, names of foreign suppliers, port of origin, etc.

6. An import license is not transferable, except where the corporate or firm name of licensee has been changed, or when it is desired to transfer license to subsidiary of the licensee duly registered in the Import Control Office, or where the entire or a substantial portion of the assets of the corporation has been sold or transferred to any individual or firm duly registered in the Import Control Office.

7. To secure a consular invoice abroad, the importer must give the number of the import license, which must be shown on the consular invoice.

8. In order to clear shipments, the importer must present the original copy of the import license to the Collector of Customs at the port of entry.

9. If only a partial shipment has been made against an import license and no additional shipments against the unshipped balance is contemplated, the license must be returned to the Import Control Office.

10. An import license is subject to revocation for cause.

11. In case the goods covered by an import license are not shipped before the expiry date of the license, request for extension may be made with the Import Control Board which may grant such extensions for justifiable cause.

12. Application to renew an expiring import license should be made 10 days before the expiry date. The request for renewal should consist of a new license application accompanied by the old license and the reasons why renewal is requested.

13. If the Board finds that the importer has failed or has not taken steps to import the articles covered by his license, the Board may cancel it and reallocate the quantity of merchandise covered by such license.

14. Acceptance of orders by suppliers abroad should be reported immediately to the Import Control Office, stating approximate date of shipment, together with the documents evidencing acceptance.

15. Importers of goods under license will report in writing the arrival of such goods to the Import Control Office within two (2) days of such arrival.

16. Goods in bonded warehouses in the Philippines are considered to have entered the country.

17. Goods not included in the list appended to Executive Order No. 193 do not need import license.

18. Goods in dock, on lighter and on exporting vessel on January 1, 1949 are considered to have left port on that date and therefore not subject to import control.

19. Import license numbers will not be required on consular invoices before January 20, 1949. However, importers in the Philippines must secure import license upon arrival.

20. Old importers must register on or before January 31, 1949 and new importers on or before February 28, 1949.

* * * * *

CIRCULAR 2
(Revised)

January 21, 1949

TEXTILES

Specific Articles Under Woven Fabrics, Ready-Made Wearing Apparel,
Household Articles And Other Manufactures

Those not included are not under control.

Woven Fabrics

1. Cloth, knitted and not knitted
2. Remnants

SWAN, CULBERTSON & FRITZ

BROKERS IN LOCAL AND FOREIGN SECURITIES

Member—Manila Stock Exchange

Correspondents — New York — San Francisco
Honolulu — Uruguay
Shanghai — Hongkong

701 S. J. WILSON BLDG.
143 JUAN LUNA

TELS. { 2-74-55
2-80-53

- 3. Tapestries
- 4. Tulle
- 5. Veilings
Applies to Rayon & other textiles, not controlled if made of cotton except grey cloth 17.1.

Ready-Made Wearing Apparel

- | | | |
|------------------|-------------------|---------------|
| Inner | Outer | |
| 1. Nightgowns | 1. Bathrobes | 8. Overalls |
| 2. Petticoats | 2. Blouses | 9. Pajamas |
| 3. Sports Shirts | 3. Coats | 10. Pants |
| 4. Shirts | 4. Dresses | 11. Skirts |
| 5. Slips | 5. Jackets | 12. Slacks |
| | 6. Kimonos | 13. Sun Suits |
| | 7. Lounging Robes | 14. Trousers |

Applies to cotton, Rayon & other textiles.

Household Articles

- 1. Bath Mats
- 2. Bed Sheets and Pillow Sheets
- 3. Blankets
- 4. Curtains and Draperies
- 5. Mosquito Nets
- 6. Quilt, Counterpanes, and Bedspreads
- 7. Table Cloths
- 8. Towels
- 9. Table linens or covers, doilies, napkins and table runners
Not controlled if made of cotton.

Other Manufactures

- 1. Carpets
 - 2. Embroideries
 - 3. Handkerchiefs
 - 4. Laces
 - 5. Umbrellas
 - 6. Veils
- Items 1, 2, 3, 5 and 6 are not controlled if made of cotton, except item 4 (Laces) and weaving yarns.

(SGD.) ERNESTO B. LEDESMA
Executive Officer

CIRCULAR 3

January 13, 1949

SPECIFIC ARTICLES UNDER:

BEAUTY CULTURE EQUIPMENT

- 4.1 Beauty Parlor Equipment and Accessories
 - (a) Electric Permanent Wave Machine (including Wireless or Pre-Heat)
 - (b) Electric Hair Dryer
 - (c) Electric Steamer for hot oil treatment
 - (d) Shampoo Board
 - (e) Croquignole Heaters
 - (f) Spiral Heaters
 - (For Toilet Preparations used by Beauty Parlors, please consult the heading **PERFUMES AND TOILET PREPARATION.**)
 - 4.2 Manicure Apparatus and Accessories:
Manicure sets, any component part of which is of gold, silver or platinum (plated or not plated)
 - 4.3 Dresser Sets:
 - (a) Powder Boxes
 - (b) Perfume or Lotion Bottles
 - (c) Atomizers
 - (d) Combs
 - (e) Brushes
 - (f) Hand mirrors
- When any component part of the above articles is of gold, silver or platinum (plated or not plated or if the glassware are of cut glass),

GAMES AND AMUSEMENTS

- 5.5 Other game equipment
Includes pinball machines, chess, checkers, dominos, bingo.

ORNAMENTAL ARTICLES, INCLUDE:

- (a) Christmas trees, decorations and lights
- (b) Flower vases, bowls, stands, brackets and hangers
- (c) Figures
- (d) Candle sticks
- (e) Book ends
- (f) Curios and carvings
- (g) Artificial flowers and fruits
- (h) Picture frames

Approved By The Import Control Board
At Its Meeting On January 10, 1949

(SGD.) ERNESTO B. LEDESMA
Executive Officer

MOTOR SERVICE CO., INC.

AUTOMOTIVE PARTS • ACCESSORIES
GARAGE & SHOP EQUIPMENT
BATTERIES • TIRES • TUBES

230 13th ST., PORT AREA TEL. 2-65-27

SILVER AND JAVA PACIFIC LINES

SILVER LINE, LTD.
London, E. C. 2

JAVA PACIFIC LINE
N. V. S. M. "Nederland"
N. V. Rotterdamsche Lloyd
Amsterdam—Rotterdam

KERR STEAMSHIP CO., INC.
General Agents
17 Battery Place
New York

JAVA PACIFIC LINE, INC.
General Agents
25 Broadway
New York

MANILA ILOILO CEBU
To and From
VANCOUVER SEATTLE PORTLAND
LOS ANGELES and SAN FRANCISCO
and
To and From
BOMBAY and CALCUTTA



SILVER LINE, LTD.

KERR STEAMSHIP COMPANY, INC., GENERAL AGENTS
17 Battery Place, New York 4, N. Y.

FROM
U. S. ATLANTIC COAST PORTS
TO
MANILA

FROM
PHILIPPINES

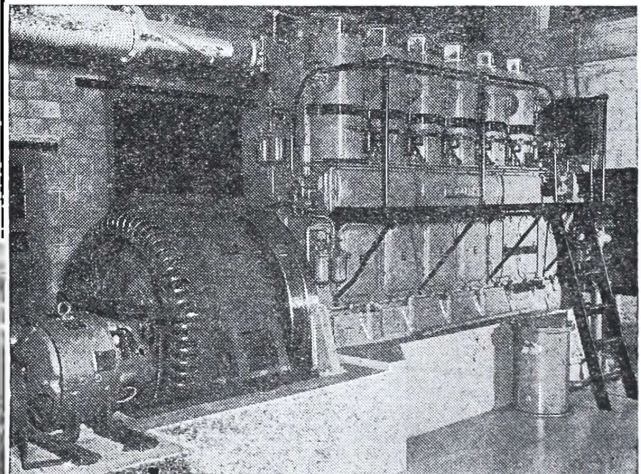
TO
HALIFAX and U. S. ATLANTIC COAST PORTS

For Particulars See:

ROOSEVELT STEAMSHIP AGENCY, INC.
AGENTS

3rd Floor, Trade & Commerce Bldg., Juan Luna Tel. 2-82-01

ENTERPRISE
HEAVY DUTY
DIESEL ENGINES
for
Electric Drive



Prompt Delivery

Exclusive Distributors

MANILA MACHINERY & SUPPLY CO., INC.
675 Dasmariñas Tel. 2-72-98

SUPERIOR GAS & EQUIPMENT CO.

MANUFACTURERS AND MANUFACTURERS' REPRESENTATIVES

Producers of:

SUGECO
Highest Purity
OXYGEN and
ACETYLENE GASES

"SUPER FLAME"
BOTTLED and
TANK GAS
For all cooking purposes

CARBON DIOXIDE
In liquid and solid form
For
FIRE EXTINGUISHERS
BOTTLED DRINKS and
FROZEN FOOD PRESERVATION

HYDROGEN GAS
For balloons

Distributors of:
NATIONAL CARBIDE
WELDING EQUIPMENT &
SUPPLIES
TAPPAN GAS STOVES

with complete Installation & Service Facilities



CIRCULAR 4

January 15, 1949

1. Quotas to old importers may be based either on their total imports during the base period or on two-thirds of their imports from July 1, 1947 to December 31, 1948.
2. Shipments covered by payments made by the importers or by irrevocable letters of credit issued prior to January 1, 1949, certified by the issuing bank, shall be given import licenses. Such shipments shall be charged to the present and future quotas of the importers.
3. Merchandise shipped from the port of embarkation after January 1, 1949 but were in transit from the point of origin to the port on or before that date, shall be issued the corresponding import licenses. Such shipments shall be charged to the present and future quotas of the importers.
4. In the two preceding cases, should the total quota of the importer be insufficient to cover his shipment, the excess thereof shall be referred to the Import Control Board for decision.

(SGD.) ERNESTO B. LEDESMA
Executive Officer

* * * *

CIRCULAR 5

January 18, 1949

Specific Articles Coming Under Furniture,
Item 24.4 of Appendix "A"

(Hospital and Medical Equipment are not under control)

- Beds
- Benches
- Bookcases
- Buffet
- Cabinets (kitchen, storage, etc.)
- Chairs
- Commodore (comodas)
- Cupboards
- Dressers (vanities)
- Decks
- Hostess Serving Carts
- Magazine Baskets
- Nursery Furniture
- Racks (for hats or canes)
- Screens (mamparas or cancelos)
- Sofas
- Stools
- Tables
- Wardrobes

(SGD.) ERNESTO B. LEDESMA
Executive Officer

*

CIRCULAR 6

January 24, 1949

Licenses For Articles Used As Samples

Articles under control brought in or sent to importers or indentors in the Philippines as samples shall be allowed to come in provided the necessary license has been secured for them. The licenses for such articles will be for specific amounts and periods to be determined by the Import Control Office. Importers or indentors desiring such licenses must file their applications (Form IC-7) under oath with the Import Control Office. These articles are not chargeable to quotas.

Licenses For Articles For Personal Use

Articles under control for personal use and not for resale shall be allowed to enter by mail, air or ship provided the necessary license has been secured for them. These licenses will not require quotas. Applications for these licenses may be made by filling out the Import Control Office Form No. IC-7. When the articles are to be brought in by incoming passengers, applications may be filed with the Philippine Consulates abroad. These applications duly approved by the Philippine Consulates should be presented to the Import Control Office at Manila or to the Collector of Customs at other ports of entry for a license to clear the shipments.

FOR
RE-WINDING OF
GENERATORS -- MOTORS

CALL

E. J. MORA ELECTRIC CO., INC.

Address:

170-2 M. de Comillas Tel. 6-65-85

Rayon Price Limits

The price limits set for Rayon fabrics in Appendix "B" of Executive Order No. 183 apply to cloths of single width not to exceed 40". The price limits for cloths with widths over 40" are two times those of single width.

**Chandeliers
(Item 13.2)**

For purposes of the Import Control Law, CHANDELIERS are defined as lighting fixtures with more than six (6) outlets for lights. Chandeliers with six (6) or less numbers of outlets are not subject to control. Chandeliers made of cut glass are subject to control irrespective of the number of outlets.

(SGD.) ERNESTO B. LEDESMA
Executive Officer

* * * *

CIRCULAR 7

January 31, 1949

TOYS

UNDER CONTROL

- Air Rifles
- Construction Sets except those listed below under "NOT UNDER CONTROL"
- Dolls and Accessories
- Miniature Musical Instruments
- Roller Skates
- Rubber Balloons
- Toy Games
- Trains, Mechanical and Electrical and Accessories
- All other Toys not listed below under heading "NOT UNDER CONTROL"

NOT UNDER CONTROL

- Airplane Model Construction Sets
- Alphabet Blocks
- Savings Banks
- Ship Model Construction Sets
- Lady Carriages and Children's Vehicles:
 - Automobiles
 - Beach Vehicles
 - Gocarts
 - Scooters and Sidewalk Cycles
 - Strollers
 - Sulkies
 - Three Wheeled Play Carts
 - Velocipedes and Tricycles
 - Wagon (Coasters and Play)
 - Walkers and Tenders

(SGD.) ERNESTO B. LEDESMA
Executive Officer

Weekly Changes in Retail Prices

*Bureau of Commerce, Market Division
January 24 to 29, 1949*

THE deflationary trend of retail prices of essential commodities, which has been going on steadily since the last quarter of the past year, appears to be gathering momentum as reflected by the further drop of the Bureau of Commerce Price Index to the 235.94-mark, recording a new post-liberation low. The lowest point ever touched by the index previously was at the 237.10-mark during the middle part of 1948. Likewise, the recent decrease of the index by 4.05 points from the previous week's level, was the sharpest made within the last four months. Principally responsible

**MANILA SHIPYARD, DRYDOCK AND
ENGINEERING CO.**

**OFFERS COMPLETE HULL AND ENGINE
REPAIR
THREE SLIPWAYS AND DRYDOCK AVAIL-
ABLE.**

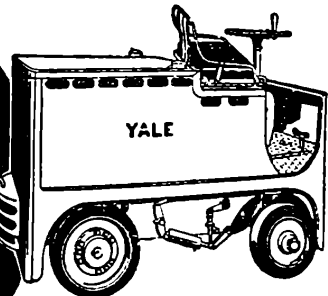
Shipyards: Navotas, Rizal Tel. 40 Ask 499
Office: Room 507 Insular Life Bldg., Manila
Tel. 2-89-06

FOR THE

LONG PULL

AND THE

HEAVY LOAD



YALE
TRACTOR

TRAILER TRAINS move along at a fast clip when the motive power is supplied by a rugged, easy-to-operate Yale Electric Tractor.

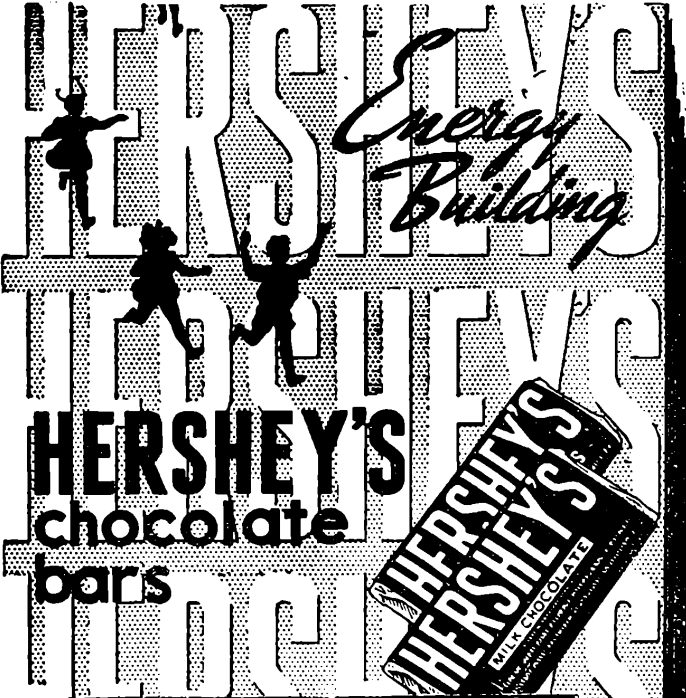
Whether your hauls are in the plant, from building-to-building, in storage yards or on receiving and shipping docks, the dependable Yale Electric Tractor "delivers the goods" in a hurry—and saves you money.

Yale makes a complete line of industrial electric tractors. There's a

model with exactly the pulling power you need. Two and four wheel drives. Fixed or automatic trailer couplers. We'll gladly tell you all about them, feature for feature. At the same time you can learn how Yale High-Lift Fork and Platform Trucks take all the hard work out of loading and unloading trailers. Make an appointment to suit your convenience. Call us today!

THE EDWARD J. NELL COMPANY
1450 Arlegui St. Tel. 3-26-15

**TOOLS THAT KEEP INDUSTRY
ON THE MOVE . . . MADE BY** YALE



HERSHEY'S
chocolate
bars

CONNELL BROS. COMPANY
MANILA • CEBU • ILOILO • DAVAO