

Fi

N1

THE

UNIVERSITY OF THE PHILIPPINES
LIBRARY
JUL 10 1975
10/2/75 J

MARSMAN MAGAZINE

A MONTHLY CHRONICLE
OF THE ACTIVITIES
OF THE
ORGANIZATION

FOR THE INFORMATION OF SHAREHOLDERS
OF
MARSMAN AND COMPANY, INC.
MINE MANAGERS AND OPERATORS
AND
ASSOCIATED COMPANIES

VOL. I
APRIL
1937
NO. 10

MANILA, PHILIPPINES

APRIL
1937

THE MARSMAN MAGAZINE

Vol. 1
No. 10

EXPANSION

The activities of the Marsman organization during the past year have indicated clearly that the possibilities for mining, not only in the Philippines but also in other parts of the Far East, are excellent.

Exploration work now going on in the Netherlands East Indies has met with encouraging results, and it is not at all unlikely that mining will become an important industry in that area. While the existence of gold has been known for many years, there has been no serious prospecting by a scientific organization up to the present.

In China, preliminary inspections have indicated the probability of several interesting mineral areas which may be developed in the near future.

Work is going on in several different localities at the present. Engineers of the organization are constantly on the alert for mining properties for development.

With all this activity in other parts of the Orient, there is no neglect of the
(Continued on page 8)

Table of Contents

Editorial	1
Marsman Investments Directory	2
Marsman & Company Directory	3-4
A Page of Production Figures	5
Itogon Mining Company	6
Acoje Mining Company	6
Dulong Mining Company	6
Suyoc Consolidated Mining Co.	8
Palidan-Suyoc Deep Level Tunnel Co. .	8
Dayaka Mining Company	8
United Paracale Mining Company	10
The New Smelter	11
Gumaos Goldfields, Inc.	12
Filipinas Mining Corporation	12
San Mauricio Mining Company	13
Marsman Hongkong China Meeting	16
New Bucyrus Machine	18
Hongkong Transfer	19
Card of Thanks	19
Marsman Engineers in Sumatra	22-23
Let's Get Acquainted	25
With the Marsman Men	26-27
Tinga Gold Mining Company	28
Homestake Gold Mines, Inc.	28

Published on or about the 20th of each month for Marsman & Company, Inc., Insular Life Building, Plaza Cervantes, Manila, Philippines. P. O. Box 297.

The magazine is sent to all stockholders of Marsman managed properties and to all staff members of the companies associated with the Marsman interests.

NOTE: All ore values, bullion figures, etc., given in this magazine are expressed in pesos based on gold at \$35.00 an ounce and silver at the market price. Figures given in monthly reports are based on mine assays, and may differ to some extent from final mint or smelter returns.

Reproduction of materials published in The Marsman Magazine is welcomed. Cuts used may be borrowed, or matrices supplied, upon application to the editor.

SUBSCRIPTION PRICE, ₱5 A YEAR.

Entered as second class mail matter at the Manila Post Office, July 18, 1936.

RALPH KEELER, Editor

N. LEWIS, Business Manager

MARSMAN INVESTMENTS, LIMITED*DIRECTORS*Jan Hendrik Marsman, *Chairman*Geo. C. Dankwerth, *Managing Director*

Adolphus Beckerleg

Benjamin S. Ohnick

George W. Kerr

Henry P. L. Jollye

LONDON COMMITTEE

L. E. B. Homan

Mrs. M. A. Marsman

M. Hackforth Jones

Dr. A. Wijnberg

B. W. Mason

E. W. B. Leake

TECHNICAL ADVISERS AND CONSULTING ENGINEERS

Marsman & Company, Inc.

Insular Life Building, Manila, P. I.

BANKERS

Chartered Bank of India, Australia & China

38 Bishopsgate, London, E. C. 2, England

Chartered Bank of India, Australia & China

Wilson Building, Manila, P. I.

AUDITORS

S. H. Swallow & Company (Chartered Accountants)

38 Basinghall Street, London, E. C. 2, England

White, Page & Company

Chartered Accountants

National City Bank Building, Manila

GENERAL COUNSEL IN THE PHILIPPINES

Benjamin S. Ohnick

SECRETARY AND TREASURER

A. F. Kelly

Insular Life Building, Manila, P. I.

ASSISTANT SECRETARY AND TREASURER

John Hunter

LONDON REGISTRAR AND TRANSFER OFFICE

J. O. Wheeler, A. C. A.

149 Leadenhall St., London, E. C. 3, England

REGISTERED OFFICE

149 Leadenhall St., London, E. C. 3, England

HEAD OFFICE

Insular Life Building, Manila, P. I.

MARSMAN AND COMPANY, INC.

Incorporated under the laws of the Philippine Islands

HEAD OFFICE: Fifth Floor, Insular Life Building
Plaza Cervantes, Manila, P. I.
Post Office Box 297, Manila, P. I.

EUROPEAN OFFICE: 149 Leadenhall St., London, E. C. 3, England

BRANCH OFFICES: Baguio, Mountain Province, P. I.
Paraoale, Camarines Norte, P. I.
Surigao, Surigao, P. I.

BOARD OF DIRECTORS

J. H. Marsman, *Chairman*

A. Welhaven

J. O. Enberg

A. Beckerleg

B. S. Ohnick

W. H. Brown

T. J. Wolff

E. Madsen

Geo. C. Dankwerth

A. F. Kelly

EXECUTIVE COMMITTEE

J. H. Marsman, *Chairman*

A. Beckerleg

B. S. Ohnick

A. Welhaven

OFFICERS:

J. H. Marsman, *President*

B. S. Ohnick, *First Vice-President*

A. Beckerleg, *Vice-President*

A. Welhaven, *Vice-President*

Geo. C. Dankwerth, *Vice-President*

A. F. Kelly, *Treasurer*

M. H. O'Malley, *Secretary*

John Hunter, *Assistant Treasurer*

GENERAL COUNSEL

Benjamin S. Ohnick

AUDITORS

White, Page & Company

Chartered Accountants

BANKERS

Peoples Bank & Trust Company

and

Chartered Bank of India, Australia & China.

MARSMAN AND COMPANY, INC.

BOARD OF CONSULTING ENGINEERS:

- J. O. Enberg, *Chairman*
- A. Beckerleg, *Director, Marsman & Company and Marsman Investments, Ltd.*
- A. Welhaven, *Manager, Manila Division*
- J. O. Greenan, *Consulting Engineer*
- J. B. Stapler, *Manager, Southern Division*
- G. W. Kerr, *Consultant, Placer Mining*
- C. A. Weekley, *General Mill Superintendent*
- R. W. Crosby, *Manager Northern Division*

GEOLOGICAL AND FIELD ENGINEERING SECTION:

- J. E. Atkinson, *Division Engineer*
- L. W. Buchanan, *Examining Engineer*
- D. W. Blythe, *at San Mauricio Mining Company*
- V. V. Clark, *Placer Engineer*
- A. M. Dixon, *at Gumaos Goldfields*
- Frank Erno, *General Superintendent, Mindanao Mining Company*
- J. E. Fyfe, *Southern Division, Engineer and Geologist*
- D. L. Gardner, *Geologist, Southern Division*
- H. G. Iverson, *Metallurgist*
- G. H. Newman, *Engineer and Geologist*
- C. G. Scott, *at Acoje Mining Co., Zambales*

MACHINERY AND SUPPLY DEPARTMENT:

- C. H. Hirst, *Manager*
- G. H. Evans, *Purchasing Agent*
- H. A. Ottiger, *Baguio Branch Manager*
- H. J. H. Maclean, *Paracale Branch Manager*

INSURANCE DEPARTMENT:

- F. J. Courtney, *Manager*

ACCOUNTING DEPARTMENT:

- R. C. Allen, *Chief Mine Accountant*
- C. E. Strait, *Chief Commercial Accountant*

A PAGE OF PRODUCTION FIGURES

These figures are mine estimates only: final mint returns will differ slightly

	JANUARY				FEBRUARY				MARCH			
	1934	1935	1936	1937	1934	1935	1936	1937	1934	1935	1936	1937
Itoyon	₱170,750	196,714	169,785	264,700	171,370	176,136	189,827	237,648	170,847	186,118	215,747	269,610
San Mauricio				241,434			80,474	173,491			75,305	175,777
Suyoc Consolidated		52,104	101,628	98,850		46,768	92,098	87,873		58,503	98,910	126,146
United Paracale			103,702	119,686			73,280	109,822			76,858	93,631
Northern Mining			214	375			5,441	527			3,964	85
Coco Grove			8,157				44,990	nil			60,647	
TOTALS	₱170,750	248,818	383,486	725,045	171,370	222,904	486,110	609,361	170,847	244,621	531,431	665,250

	APRIL			MAY			JUNE		
	1934	1935	1936	1934	1935	1936	1934	1935	1936
Itoyon	186,700	189,400	270,859	182,000	205,173	216,162	189,763	206,400	226,335
San Mauricio			149,990			106,540			100,388
Suyoc Consolidated		86,225	79,411		91,957	95,731		75,644	86,080
United Paracale			87,755			109,431		70,481	101,494
Northern Mining			4,009			4,819			13,564
Coco Grove			45,531			53,700			13,345
TOTALS	₱186,700	275,625	637,555	182,000	297,130	586,383	189,763	352,525	541,206

	JULY			AUGUST			SEPTEMBER		
	1934	1935	1936	1934	1935	1936	1934	1935	1936
Itoyon	177,626	209,218	253,132	170,268	71,353	207,423	₱195,603	172,972	226,538
San Mauricio			161,607			202,786			213,420
Suyoc Consolidated		68,362	85,672		75,673	120,719		81,773	99,931
United Paracale		93,344	110,336		99,045	111,417		50,232	123,375
Northern Mining			5,488			10,526			9,277
Coco Grove			69,010			88,119			110,701
TOTALS	₱177,626	370,924	685,245	170,268	246,071	740,990	195,603	304,977	783,242

	OCTOBER			NOVEMBER			DECEMBER		
	1934	1935	1936	1934	1935	1936	1934	1935	1936
Itoyon	218,892	201,378	299,119	₱183,853	199,841	₱294,519	204,362	204,504	256,223
San Mauricio			224,512			228,235			250,631
Suyoc Consolidated		101,166	113,108		105,652	97,691		103,764	101,568
United Paracale		80,403	138,415		77,711	122,732		90,215	116,996
Northern Mining			2,444			5,871			6,732
Coco Grove			95,545		7,981	48,101		8,100	
TOTALS	₱218,892	382,947	873,143	183,853	391,185	796,261	204,362	406,583	732,150

	(First 3 Months)			
	1934	1935	1936	1937
Itoyon	₱2,222,034	₱2,219,207	₱2,825,669	771,958
San Mauricio			1,793,388	590,702
Suyoc Consolidated		947,591	1,172,547	312,869
United Paracale		561,431	1,275,791	323,139
Northern Mining			72,349	987
Coco Grove		16,081	636,958	
TOTALS	₱2,222,034	₱3,744,310	₱7,777,202	1,999,656

Itogon Mining Company

WARREN GILKISON
General Superintendent

During March, 18,880 tons of ore were milled with a gross production of ₱269,610.37. The recovered value was ₱14.44 per ton and the percentage of extraction for the month was 86.97%.

Development

Total development during March was 3,226 feet, of which 1,126 feet were advanced in operating development and 2,100 feet in capital development.

Of the operating advance, 873 feet, or 77% were in ore, while 923 feet, or 43% of the capital development were in ore.

The 875 drain tunnel was advanced 126 feet, making it 1,026 feet in from the portal on March 31. More rapid advance is expected from now on because the ground is harder and will require less timbering.

The road to the camp has been completed and after one or two minor adjustments will be open for use.

Levelling of the site for the ore bin was completed and a temporary bodega has been built. Plans and estimates for an 8,000 ton bin were drawn and submitted.

The increased tonnage reduced the milling cost and it is expected that there will be a further lowering of milling costs when the enlargement program has been completed.

Construction

Work on the mill drainage system and conditioning of mill flooring is progressing satisfactorily.

Excavation for the foundation of Diesel electric unit No. 4 was completed and the pouring of the concrete foundations was started.

The 20-foot steel solution tank was completed and is now in use, as is the 500 Level sub-station and the 90-foot sedimentation unit.

ACOJE MINING COMPANY DULONG MINING COMPANY

The development to date has been quite favorable. During March, Lens No. 1 was sunk to a depth of 43 feet.

On lens No. 4, two more trenches were deepened in addition to the four reported last month. On Lens No. 7 the three shafts started have all been completed.

The necessary rights-of-way were procured for the road to the pier and grading was started about the middle of the month. By the end of March 1.5 kilometers of grade were completed. The grading should be completed by

The total advance for the month of March was 383.5 feet. This includes the work done on the Sampaguita, Aurora, and Luna sections.

The maps are being completed and the tracings will be ready, so that blueprints can be made some time this month.

There were several cases of influenza and malaria during March but nothing serious resulted.

April 10 and the road will be open to use shortly after.

MARSMAN & COMPANY

has agreements with the following companies, on either a profit-sharing or fee basis, or both:

Itogon Mining Company

Suyoc Consolidated Mining Company

United Paracale Mining Company

San Mauricio Mining Company

Coco Grove, Inc.

Acoje Mining Company

Dulong Mining Company

Mindanao Mining Company

Gumaos Goldfields, Inc.

Filipinas Mining Corporation

Valley Placer Mining Company

Tinga Gold Mining Company

Kowloon Tungsten Project

Homestake Gold Mines, Inc.

Palidan-Suyoc Deep Level Tunnel Company

Elizabeth Anaconda Mining Association

Dayaka Mining Company

In addition, the company carries on a consultation service with a competent staff of mining engineers, geologists, and metallurgists available for such work.

Further information will be furnished upon request.

Suyoc Consolidated Mining Company

L. M. ROBINSON
General Superintendent

During March 6,722 tons of ore were milled with a gross production of ₱126,145.96. The recovered value was ₱18.77 per ton and the percentage of extraction for the month was 88.30%.

Development

A total of 1,297 feet was advanced during the month, 737.5 feet being in capital development and 559.5 feet in operating development. Of the capital

development, 85 feet, or 11.5%, were in ore, while 134.5 feet, or 24% of the operating development was in ore.

The 2000 level pump station is now being cut.

Work was started on the Hospital extension and on the power house switchboard extension, both of which were partially finished by the end of March.

PALIDAN-SUYOC DEEP LEVEL TUNNEL COMPANY

During March the face was advanced 153 feet, making it 383 feet from the portal. The present face is on bearing to Suyoc Consolidated Mining Company's No. 1 Shaft.

The 1000-cubic foot Pennsylvania compressor has been installed and is operating continuously and satisfactorily.

After minor changes in design, the Jumbo drill carriage is functioning very efficiently.

The Ruhrthaler Diesel locomotive, which was received during the month, was assembled and tried out. Several slight changes are being made but it is expected that the locomotive should be operating with the 45-cubic foot cars by April 15.

During the month work was done on the Hospital extension and on the installation of tunnel pipe lines, also on the installation of a steel shop.

DAYAKA MINING COMPANY

The total development advance for March was 620 feet. Of this, 37.5 feet were done on the 200 Level; 318 feet on the 300 Level South; 84 feet on the 300 Level North; 5 feet on the John Level; 25.5 feet on the Bill Tunnel; 90 feet on Prospect Tunnel on Outcrop No. 1; and 60 feet on Prospect Tunnel on Outcrop No. 2.

Aside from shelves and tables, staff house No. 1 has been completed.

During April an assay office is expected to be in operation, a new furnace having arrived and the services of an assayer engaged.

Expansion...

(Continued from page 1)

Islands themselves. The operations of the company in the Philippines are expanding steadily. This year may see several new gold producers added to the list, as well as mining operations other than gold.

Mining has long been neglected in this part of the world. Conditions throughout the world now, however, are such that there is every reason to expect that the mining industry will become increasingly important.

MANILA MACHINERY & SUPPLY CO.

INCORPORATED
675-681, DASMARIÑAS
—MANILA—



Exclusive Philippines Agents

FOR THE FOLLOWING MANUFACTURERS:

JEFFREY MFG. CO., Columbus,
Ohio.

Conveying and Mill Equipment

TRAYLOR ENG. & MFG. CO.,
Allentown, Pa.

Crushing and Cement Equip-
ment

WALWORTH INTERNATIONAL
CO., New York City, N.Y.

Valves, Fittings, Tools

RUSTON & HORNSBY, LTD.,
Lincoln, England

Diesel Engines, Diesel Loco-
motives

BUCYRUS ERIE CO., South Mil-
waukee, Wisconsin.

Gold Dredges & Excavating
Equipment

IDEAL ELECTRIC & MFG. CO.,
Mansfield, Ohio.

Alternators, Generators, Mo-
tors.

MINE SAFETY APPLIANCES
CORP., Pittsburgh, Pa.

Complete Mine Safety Equip-
ment, Miner's Protective
Hats.

KIMBALL KROGH PUMP CO.,
San Francisco, Calif.

Pumps for all Mill Purposes.

THE A. LIETZ CO., San Fran-
cisco, Calif.

Complete Surveying Equip-
ment.

E. H. EDWARDS CO., San Fran-
cisco, Calif.

High Grade Wire Rope.

WRIGHT MFG. CO., 230 Park
Ave., New York City.

*Division of American Chain and
Cable Co., Inc.*

Hoists, Trolleys' Cranes.

SULLIVAN MACHINERY CO.,
New York, N. Y.

Hoists, Air Compressors, Rock
Drills, Etc.

DEWAR MFG. CO., Brooklyn,
N. Y.

"I.T.P." Carbide Lamps.

United Paracale Mining Company

R. H. CANON
General Superintendent

During March, 9,168 tons of ore were milled with a recovered value of ₱14.06 per ton for a gross production of ₱93,716.37.

Sulphide mill No. 1 treated 3,723 tons of ore for a gross production of ₱66,974.27. Included in this total was 10 tons of ore from the Rocky Mountain Fraction Claim of the Northern Mining and Development, from which ₱85.80 was produced.

The percentage of extraction for March in the sulphide mill was 88.54%.

Oxide mill No. 2 treated 5,445 tons of ore during the month, of which 4,720 tons came from Haliguing Bato and 725 tons were low grade sulphide ore from the mine. The gross production for the month from this unit was ₱26,-

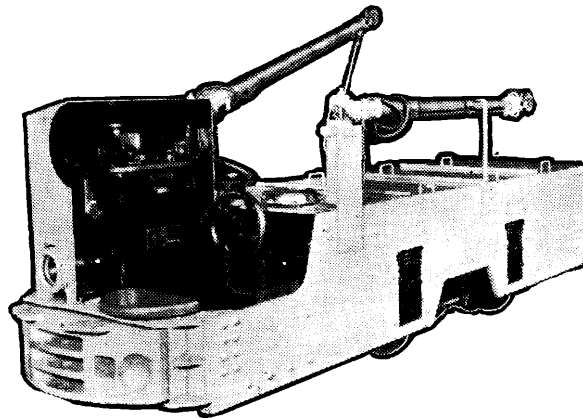
742.10, and the percentage of extraction was 50.18%.

Development

Total March development was 1,162 feet, 397 feet of which were in operating development and 765 feet in capital development. Of the total development advance 494 feet, or 42.5% were in ore.

Baluarte shaft No. 2 was sunk 35 feet and was 305 feet deep March 31. Baluarte shaft No. 1 was sunk 48 feet and was 369 feet deep March 31.

The erection of the power house building was started as soon as the excavation was completed. The excavation work for the drill shop building was continued throughout the month. Staff House No. 16 was completed and is now occupied.



TROLLEY LOCOMOTIVES

ECONOMICAL MINE HAULAGE
THE GOODMAN MFG., CO.

CHICAGO
PHILIPPINE AGENTS

MARSMAN & COMPANY

The Marsman Smelter at Mambulao is nearing completion, as these pictures, which were taken about the middle of April, show.



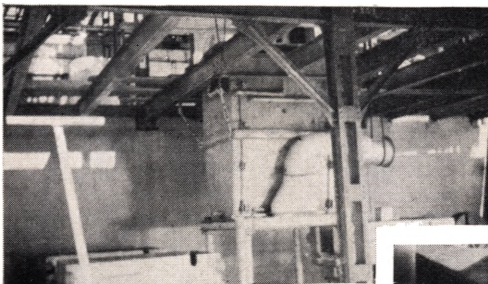
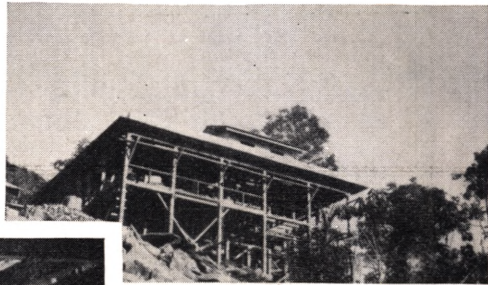
The main smelter building and the smelter stack.

The sample mill is nearly finished.



A side view of the main smelter building.

Looking at the smelter from the Mambulao Bay side.



The tapping floor.

The sintering plant building.



GUMAOS GOLDFIELDS, INC. FILIPINAS MINING CORPORATION

During March two more barrio houses were completed, making a total of 38 in all.

Three more Filipino staff houses were finished also, making a total of four houses now completed.

On the road, 300 feet of right-of-way were cleared, 100 feet excavated. From the main trail to the new location of the diamond drill, which is hole No. 8, 330 feet of trail was cleared.

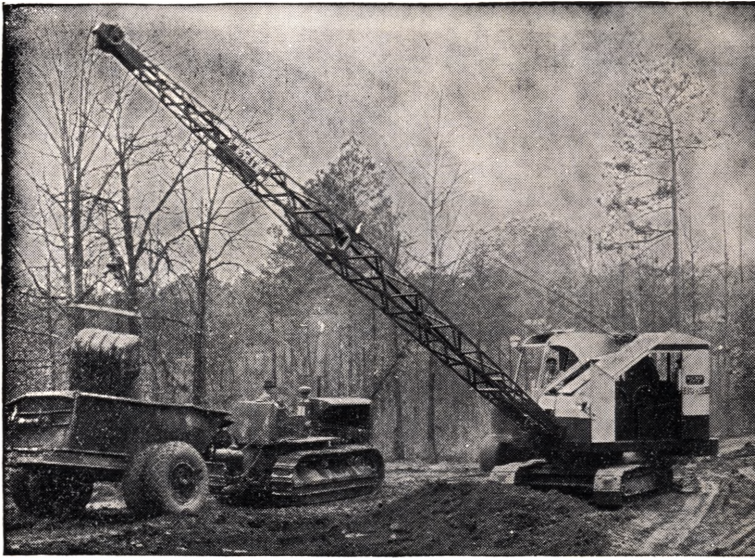
Development work went ahead as planned and diamond drilling was carried on in Holes 5, 6, 7, and 8.

Approximately 300 tons of float was gathered on the Princesa, Queen, and Don Pedro No. 1 lenses during the month of March.

During April it is expected that an accurate survey of the chromite mined to date on the various deposits will be made.

A total of 416 feet was advanced for the month of March.

Staff house No. 1 was completed and is now occupied. The 8-room bunkhouse was also completed and is now in use, while the excavation for the 6-room bunkhouse was also finished during March.



Equipment similar to this will soon be in operation at the Mindanao Mining Company. Bucyrus-Erie Manufactures the machine, which is the new 19-B 5/8 yard power shovel.

San Mauricio Mining Company

H. L. BARR

General Superintendent

The gross production for the month of March was ₧175,777.06 from 4,263 tons of ore milled. The percentage of extraction for the month was 94.7%, and the recovered value was ₧41.23 per ton.

Development

The total March development was 875 feet, of which 230 feet were advanced in operating development and 645 feet in capital development. Of the total development, 462 feet, or 52.8%, were in ore.

The new main shaft of the San Mauricio Mine was sunk 38 feet in granite gneiss and was 289 feet deep March 31.

The old San Mauricio shaft was sunk 23 feet in granite gneiss and was 500 feet deep by the end of March.

The Santa Monica shaft was sunk 23 feet in granite gneiss and was 166 feet deep at the end of the month.

Construction

The equipment for the enlargement of the mill has all been installed, except the Wilfley tables and the Weinig flotation cells. The foundation for the new 1,000-cubic-foot Pennsylvania compressor was completed during the month.

Staff House No. 10 is under construction and should be completed by the end of April.

D. MORGAN REES & SONS LTD. GROVE WORKS. WHITCHURCH. CARDIFF.

MANUFACTURERS OF WIRE ROPES OF ALL KINDS for MINING, LOGGING, OVERHEAD ROPEWAYS, SUSPENSION BRIDGES, SHIPPING, ENGINEERING, OIL WELLS, STEAM TRAWLERS, STEAM PLOUGHING, AIRCRAFT, etc.

Also manufacturers of the Highest Grade of Wire, including Special Improved and Best Plough, I, proved and Best Patent Steel, Bright, Galvanized and Rust-Resisting.

Contractors to the ADMIRALTY, WAR OFFICE, AIR MINISTRY, COLONIAL OFFICE, etc.

Head Office: Cardiff: Telephone Whitchurch 770.

London Office: 34/35 Norfolk Street, W. C. 2.
Telephone: Temple Bar 8871.

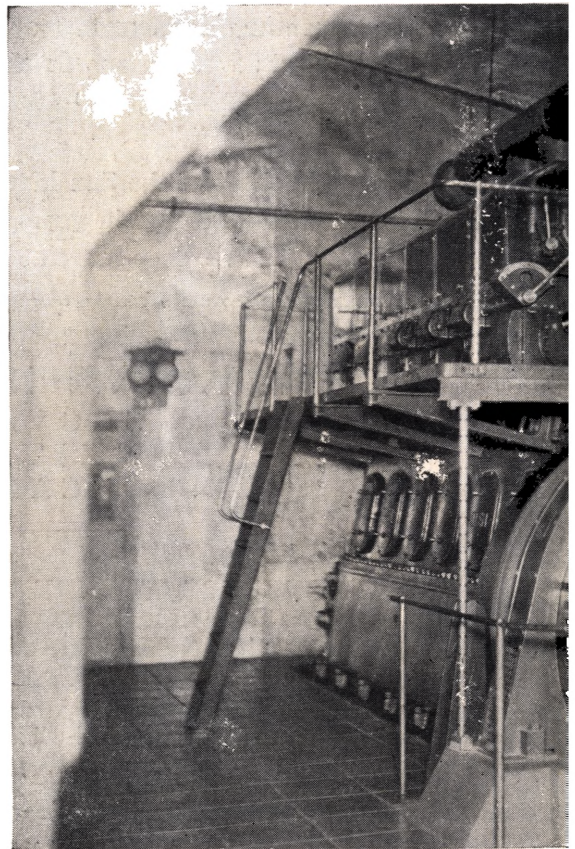
Telegram: "Nurope-Cardiff".

AL
DIESEL
ECONOMY
DURABILITY

W. H. ALLIOTT
BEDFORD

ENGAGED FOR OVER 50
MECHANICAL, HYDRAULIC

STAFF OF SPECIALISTS RETAINED WHOSE ADVICE ON ANY PROBLEM IS GIVEN WITHOUT OBLIGATION.



One of the Allen Diesels at the Itogon Mining

MARSMAN

DISTRIB

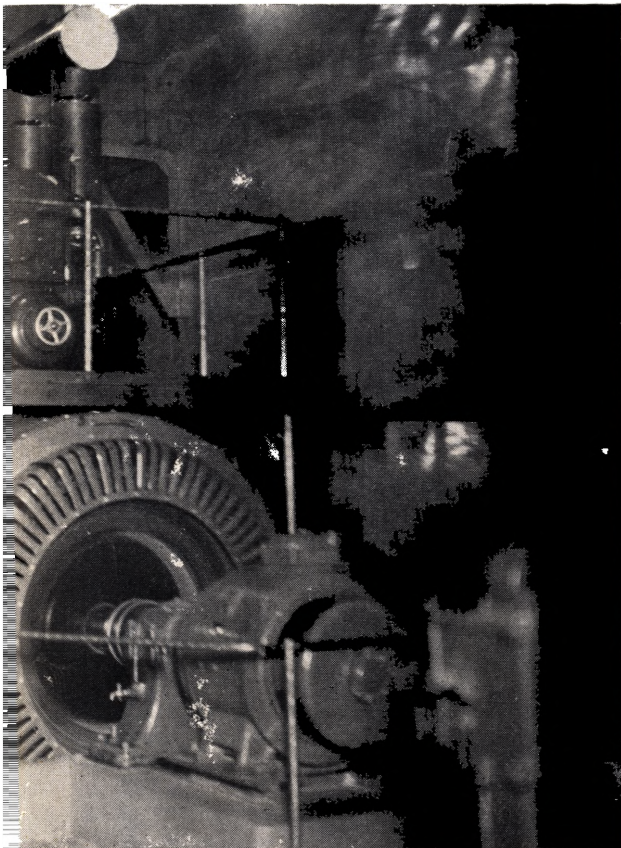
LEN

ENGINES

EFFICIENCY
DEPENDABILITY

SONS, LTD.
ENGLAND

YEARS IN MANUFACTURE OF
AND ELECTRICAL EQUIPMENT.



CONTRACTS OF ANY SIZE
UNDERTAKEN IN ANY PART
OF THE WORLD.

any. This is a 6-Cylinder 500 horsepower engine.

& COMPANY

ING AGENTS

Marsman Hongkong China Meeting

The statutory meeting of Messrs. Marsman H.K. China Ltd. took place at the Company's offices in the Hongkong and Shanghai Bank Building in Hongkong on April 16.

Those present were Messrs. G. B. Gifford-Hull, Managing Director; Benj. S. Ohnick and T. B. Wilson, Directors; A. Beckerleg and H. O. O'Dell, shareholders; and C. Brent-Smith, Secretary

In his address Mr. Gifford-Hull said: As Mr. J. H. Marsman, Chairman of the Board of Directors, is still in Europe, it falls on me to take the Chair at this meeting.

I expect you are aware that it is a formal one and is held to comply with the provisions of Sec. 112 of the Company's Ordinance. The report which you have received shows our receipts and payments up to March 31 and our position up to that date. With your consent I will take the report as read, but at the same time invite your comments or questions upon it.

This Company was formed with the object of undertaking all kinds of mining as well as heavy civil engineering works in the East generally, and although it has been in existence but a short time, I am pleased to state that considerable progress has been made.

We have become associated financially with two strongly capitalized companies formed to take over options, concessions, etc., in the Netherlands East Indies and in New Guinea. One Company has secured rights over a very wide territory in Sumatra involving about 30 known metal deposits of different sorts, and already has a competent staff of about 12, including geologists and engineers, with drilling

rigs and equipment, in the field. Several of these deposits are of value and one or two appear to show great promise. The work in Sumatra is actively in hand.

In Dutch New Guinea rights of exploration have been secured over an immense territory which is adjacent to a large area held by strong British and other mining interests, and an expedition is being sent there for the purpose of exploring this territory which is reputed to be rich in mineral deposits.

In case you would like to hear fuller details of the work in the Netherlands East Indies, I have asked Mr. Beckerleg who, apart from being a large shareholder in your Company, is a Director of Marsman Investments, who are interested in the Dutch Companies, to place himself at your disposal to give up-to-date first hand information about the work there, upon request.

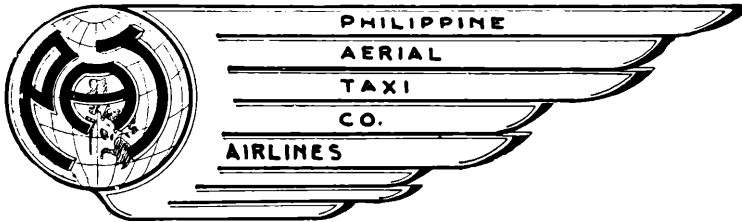
China Contacts

Your own Company has made contacts in China both with regard to mining and engineering, although nothing concrete has yet matured. Several promising mining prospects have been studied and several others are ready for study. This side of our business shows such promise that we have been forced to form immediately a strong mining Department to handle it, and I am pleased to inform you that Messrs. Marsman & Co. of Manila have agreed to place at our disposal free of charge, their Board of Consulting Engineers who will advise us on those mining matters which our own Mining Department will bring to the stage when final decisions on technical and other points have to be made.

SAFETY

COMFORT

See the Philippines
from the air



Over One Million Miles Safely Flown

Serving the Mining Districts

BAGUIO - DAILY SERVICE - Leave Manila.. 6:30 a.m.
 Arrive Baguio.. 7:30 "
 Leave Baguio.. 7:40 "
 Arrive Manila.. 8:40 "

ONE WAY - - - P25
 ROUND TRIP - P45

PARACALE - MON. Leave Manila.... 9:00 a.m.
 TUES. Arrive Paracale... 10:00 "
 WED. Leave Paracale... 10:00 "
 THURS. Arrive Manila.... 11:00 "
 FRI

ONE WAY - - - P35
 ROUND TRIP - P70

PHILIPPINE AERIAL TAXI CO.

J. H. MARSMAN, President

RESERVATIONS

Mackay Radio	Tel. 2-43-45
Manila Hotel	" 2-20-22
Bay View Hotel	" 2-43-84
Grace Park Airport	" 2-43-30
Baguio	Royal Garage
Paracale	Marsman & Co. (H. Maclean)

SPEED

SERVICE

New Bucyrus Machine

With the announcement of the new 19-B, Bucyrus-Erie now offers to the field of excavation a 5/8-yard machine of exceptional speed and mobility, a machine compact in design, distinctive in appearance, and of unusual strength and ruggedness.

The 19-B carries no excess dead-weight. Weighing but 16 tons this new power shovel offers a travel speed of 1 3/4-M.P.H., swing speed of 4 3/4-R.P.M., and a hoist line speed of 184 F.P.M. Power is available in either gasoline, electric, or Diesel engines.

In every detail of design, the new 5/8-yard machine is constructed for high-output performance as well as economy of operation costs. Low fuel consumption, elimination of deadweight, and maximum digging and dumping efficiency are the reasons for increased contractor profits. The air-conditioned streamlined cab provides complete ventilation and full visibility for the operator, and with doors opening on all sides, offers quick accessibility to the main machinery.

The narrow overall width and short tail swing of the 19-B permits easy operation in the cramped quarters of narrow alleys, between buildings, close to banks and framework, and in crowded traffic. Its great lift and dumping height gives it an unusual working range.

Seven types of front end are available, making it possible to convert this machine quickly and conveniently to the type of operation best suited to the job.

Again Bucyrus-Erie has seen to it that the features it has built into the machine require the minimum of attention from the operator. Automatic lubrication reduces the danger of neglect. Alemite high pressure grease-fittings are grouped in easily accessible locations. Large area, long life, clutch linings and reversible bands eliminate the need for constant adjustment. Strong simple mounting makes for efficient operation on uneven or muddy ground and assures remarkable freedom from adjustments and maintenance expense.

A well illustrated bulletin has been issued by the manufacturers, and pictures this revolutionary 5/8 yard excavator in actual operation on many types of work. It shows the high lift and accurate dumping features of the shovel working in close quarters, the long reach and speed of the dragline, and the easy maneuverability of the machine with any type of front end. The bulletin may be had upon request by writing to MANILA MACHINERY AND SUPPLY Co., Inc. who are the distributors of this machine for the manufacturers, Bucyrus-Erie Company, world's largest builders of excavating equipment.



Mr. F. J. Courtney, manager of the Insurance Department of Marsman and Company, led the entire world's field force of underwriters for The Manufacturer's Life Insurance Company of Canada for the month of February. Mr. Courtney's name headed Division I of the Honor Roll of the Company which appeared in the "News Letter," monthly house organ, of March.

Hongkong Transfer Office Is Now In Operation

All legal formalities for opening a Dominion Register for Marsman Investments, Limited in Hongkong have been completed. Transfers may now be accepted for registration in Hongkong. The Hongkong and Shanghai Banking Corporation is registrar for Marsman Investments, Limited.

This action, which was announced by Mr. Ohnick in April, will facilitate trading in Marsman Investment shares in the Far East, particularly in the Philippines, Hongkong, and Shanghai.

Card of Thanks

I wish to express my profound gratitude and deep appreciation to my superiors, officers, and co-workers of Marsman and Company who came so generously to my assistance when I suffered a great loss in the recent Tondo fire.

RAMON R. SISON
Clerk, Mine Accounting

Marsman Hongkong China Meeting

(Cont. from page 16)

We are not alone in holding the view that China is on the eve of a brighter future; nor alone in the view that, for a time at least, she stands in need of outside assistance in the solution of some of her immediate reconstruction problems. We know that we are well equipped technically, and well equipped for raising or providing money to enable us to offer useful assistance in the various works referred to in our Articles, works which are essential to the development of any country; and we combine with this a sincere desire to play a useful part in the movement for close Anglo-Chinese relations which has been recently widely referred to in both countries.

At this juncture I would rather not refer in detail to our work generally in China, first because it is a little premature and second because it would not be in the best interests of the Company for me to do so. I can say however, that at present we are quite satisfied, indeed I might say gratified, with the results of our efforts in this connection.

I invite questions on any matter arising from the report. If there are no questions, then I ask for a proposer and seconder to the adoption of the Statutory Report.

Mr. Ohnick proposed the motion, which was seconded by Mr. Beckerleg and was carried unanimously.

Representing The Following Pro

ATLAS POWDER CO., SAN FRANCISCO.

Dynamite and Supplies

THE GOODMAN MFG. CO.

Trolley Locomotives

Conway Tunnel Mucking Machines

**AMERICAN POTASH and CHEMICAL CORP.,
LOS ANGELES**

"TRONA" Brand Soda Ash

COLORADO IRON WORKS, DENVER, COLO.

Akins Classifiers

THE EIMCO CORP., SALT LAKE.

New and Reconditioned Machinery

A. S. CAMERON PUMP WORKS

Centrifugal Pumps for Mines and Mills

C. C. FILSON CO., SEATTLE

Hats, Coats, Pants, Waterproof.

**BRUKSKONCERNEN AKTIEBOLAG,
FAGERSTA, SWEDEN**

Drill Steel

**FRASER & CHALMERS ENGINEERING WORKS,
ERITH, KENT.**

Ball Mills and Heavy Mining Machinery.

MINE a
SUPPL
EQUIP

GASO
OI
GRE

MARSMAN AND

ducts And Firms

THE DENVER FIRE CLAY CO., DENVER, COLO.
DFC Assay Equipment and Supplies.

**GREAT WESTERN ELECTRIC CHEMICAL CO.,
SAN FRANCISCO**
Flotation Reagents, Xanthates, etc.

nd MILL
IES and
MENT

**JOSHUA HENDY IRON WORKS,
SAN FRANCISCO**
Mine Hoists

**MANCHA STORAGE BATTERY LOCOMOTIVE CO.,
CHICAGO**
Battery Locomotives

LINE
LS
ASES

D. MORGAN REES & SONS LTD., ENGLAND
High Grade Wire Rope

T. C. WILSON CO., SAN FRANCISCO
Pine Oil

JUSTRITE MFG., CO., CHICAGO
Carbide Lamps

W. H. ALLEN SONS & CO., LTD., BEDFORD, ENGLAND
Diesel Engines

COMPANY, INC.

Marsman Engineers

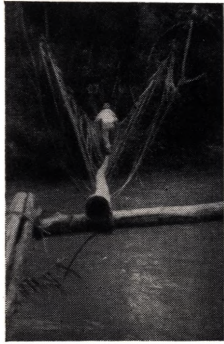


Upper left: The river Kampar Kanan at Teratahboeloh, showing the ferry approaches for different water levels. Center: A road near Fort de Kock. Lower left: Kampar Kanan at Teratahboeloh, crossing on the ferry on the way to Bengrolb.

Mr. J. O. Greenan of the Board of Consulting Engineers returned to Manila on March 25, after an inspection trip of several months to the Netherlands East Indies. The pictures shown on these pages were taken by Mr. Greenan in various parts of that interesting country. L. W. Buchanan, Charles H. McIlvaine, and H. T. Merrill left Manila on April 18 for Borneo and Sumatra, where they will carry out exploration and prospecting plans outlined by Mr. Greenan.



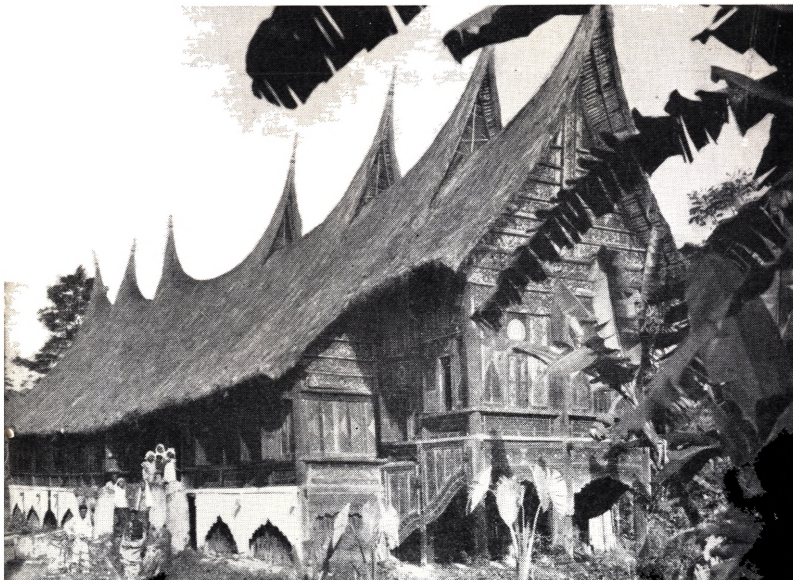
Resting by the wayside



A suspension bridge near Moeara Tambangan. Mr. Greenan may be seen making his way across this bridge which is constructed of rattan and bamboo.



A miner near Silating Batahan river, on which test work is about to begin.



Elephant - and - Children type of house near Sarilamak. The end peaks represent the elephant, the inferior peaks the children.

In Sumatra

Upper Right: A native miner. In the center picture Mr. Greenan is supervising panning for gold. Lower right: Mr. Atkinson and a "krani" or native capataz on the Rajah Gubalang mine.



Crossing the equator near Lipatkain. Left to right, Mr. Van Steenberg, Atkinson, Bluntchli.

A Bali dancing girl.



A parade held in Bandoeng in honor of the wedding of Princess Juliana.



Bull fights in which the bulls themselves do all the fighting are common occurrences in Sumatra.

A Sumatra Miner





Alfred F. Kelly

Let's Get Acquainted

The success of any business enterprise depends to a great extent upon financial control and economical management. Likewise, efficient management is only possible when the managers of a company know exactly where they stand, from time to time, as far as the financial department of the business is concerned.

By means of a standardized system of mine accounting, Alfred F. Kelly, treasurer of Marsman and Company, of Marsman Investments, Ltd., and of the mining companies under Marsman management, has all of the figures relating to every company at his finger tips. The same system is in use at each of the Marsman-managed properties, and is of inestimable help in checking on details of operation.

Mr. Kelly has built up the accounting structure of the Marsman interests until it is now one of the best ever used by a mining concern. He joined the organization in November 1931, as Treasurer of Marsman and Company and M. P. Tranco in Baguio. As the activities of Mr. Marsman expanded, Mr. Kelly assumed more and more of the financial responsibility.

A native of New York city, Mr. Kelly received his early education there. His first business experience was with the United Electric and Power Company of New York. He served in the United States Army during the World War as a first lieutenant of infantry, and had active duty in France.

Returning from Europe in 1919, Mr. Kelly entered the New York office of the Asia Banking Corporation. As an accountant for that firm he first came to the Philippines in 1921. He was connected with this bank until its liquidation in 1926. From 1926 until March, 1928, he served as secretary-treasurer of the Peoples Bank and Trust Company of Manila.

He went to the United States in 1928, and on his return became secretary-treasurer of the El Oriente Cigar Company. During his connection with this company he travelled extensively between Singapore, Shanghai, and Manila.

Mr. Kelly is well known in Baguio and Manila business circles. He is a member of several clubs and takes an active part in civic affairs of all kinds. He was married in 1923 to Miss Helen L. Shepherd, and they have one child, Alice.

With The Marsman Men

During March four new mining engineers arrived in Manila to join the staff of Marsman and Company. These men were:

Norman A. Carlile—Mr. Carlile, whose home is in Trenton, New Jersey, received his B. S. in mining engineering at Lehigh University in Pennsylvania. Just before coming to Manila he was employed by the Walker Mining Company of California. Mr. Carlile is now established at the Itogon Mining Company.

Charles Dixon Clarke—Mr. Clarke, who is now on the staff of the Suyoc Consolidated Mining Company, is from Spokane, Washington. He studied Mechanical Engineering at the University of Southern California and has worked in many different parts of the United States, his last position being with the Golden Queen Mine in Mojave, California.

Fred Furnas—Mr. Furnas, who came to Manila to join the staff of the Marsman Smelter Project, is originally from Kansas and has had many years of smelter experience before coming to the Islands.

J. Howard Hell—Mr. Hell is from Missouri, a graduate of the Missouri School of Mines, having received his B. S. degree in metal mine engineer-

ing. His last position, before coming to Manila to join the Suyoc Consolidated Mining Company, was with the American Metal Company of Texas.

Several officials of Marsman and Company left Manila April 12 on the Empress of Japan.

Alf Welhaven, vice-president and manager of the Manila division of Marsman and Company, is on his way to the United States with Mrs. Welhaven for an extended trip to the United States and Europe. They will spend some time in San Francisco visiting their daughter Miss Lilibess, and will then make an extended tour around the world.

Mr. and Mrs. Benj. S. Ohnick went to Hongkong, from where Mrs. Ohnick proceeded to the United States to spend several months with their children in Seattle. Mr. Ohnick, first vice-president of Marsman and Company, remained in Hongkong for a week on business, returning to Manila April 19.

Major A. Beckerleg, vice-president of Marsman and Company, accompanied the party to Hongkong. He and Mr. Ohnick attended the general shareholders meeting of Marsman Hongkong China Limited, held on April 16th.

WITH THE MARSMAN MEN*(Cont. from page 26)***MANILA BANKER JOINS MARSMAN AND COMPANY**

Mr. E. E. Wing, former manager of the China Bank, is now affiliated with Marsman and Company. Mr. Wing flew to the United States recently to attend the graduation of his daughter. From there he will go to London to confer with Mr. J. H. Marsman before returning to the Islands.

BALMER BABY

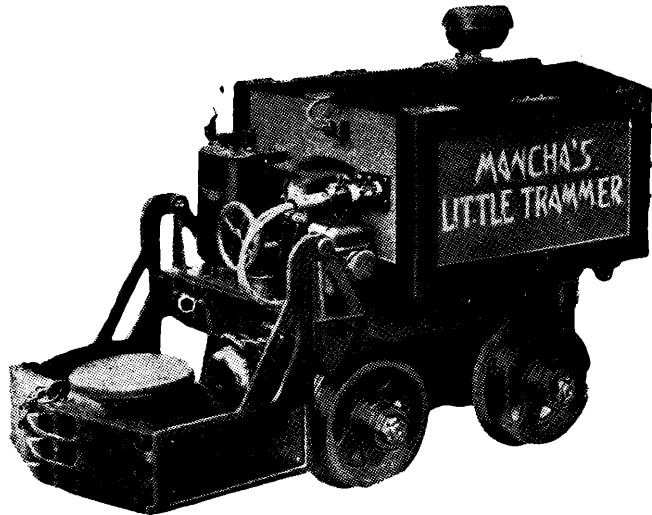
Mr. and Mrs. V. R. Balmer announce the birth of a baby daughter at the hospital at Paracale. Mr. Balmer is mill

superintendent at the Marsman Smelter Project.

Mrs. Frank Burgess left for her home in Canada aboard the President Jackson, which left Manila on April 8. Mrs. Burgess, who was formerly Miss Betty Proudfoot, is the wife of Frank Burgess, who is connected with the Manila office of Marsman and Company.

KEELER BABY

A baby daughter was born to Mr. and Mrs. Ralph Keeler on March 27 at the St. Pauls Hospital in Manila. Mr. Keeler is editor of The Marsman Magazine.

BATTERY LOCOMOTIVES**IDEAL FOR UNDERGROUND HAULAGE****MANCHA'S "LITTLE TRAMMER"****MANCHA STORAGE BATTERY LOCOMOTIVE CO., CHICAGO****PHILIPPINE AGENTS****MARSMAN & COMPANY**

TINGA GOLD MINING COMPANY

During March the following development work was completed.

In preparation for stoping operations above the No. 3 tunnel level, the raise from the No. 1 tunnel level was lined with 3-inch planks on the chute side.

During the month stope preparation on the No. 1 tunnel level was in progress and an open raise was driven to a height of 32 feet above the rails of the No. 1 tunnel level.

The No. 1 drift east on the No. 1 tunnel has been advanced to a distance of 40-1/2 feet east of the main crosscut.

A diamond drill machine has been definitely assigned for use at Tinga upon completion of the hole it is now drilling.

HOMESTAKE GOLD MINES, INC.

During March an average working force of 51 men worked 27 days in connection with the various prospecting and exploration activities in progress.

Several new outcrops were discovered and new jobs were started. The work progressed very well.

A nipa house was built near the entrance to the dynamite bodega for a watchman.

A camp site was cleared on a hillside near Job No. 14. The old tunnel at Job. No. 2 was turned into a dynamite bodega.

Working conditions during March were very good; there were no serious accidents or cases of illness.

Marsman and Company, Inc.

Insurance Department

Representing

The Employers' Liability Assurance Corporation, Ltd.

Insurance Company of North America

North China Insurance Company, Ltd.

The Manufacturers Life Insurance Company of Canada

Filipinas Life Assurance Company

Crown Life Insurance Company of Canada

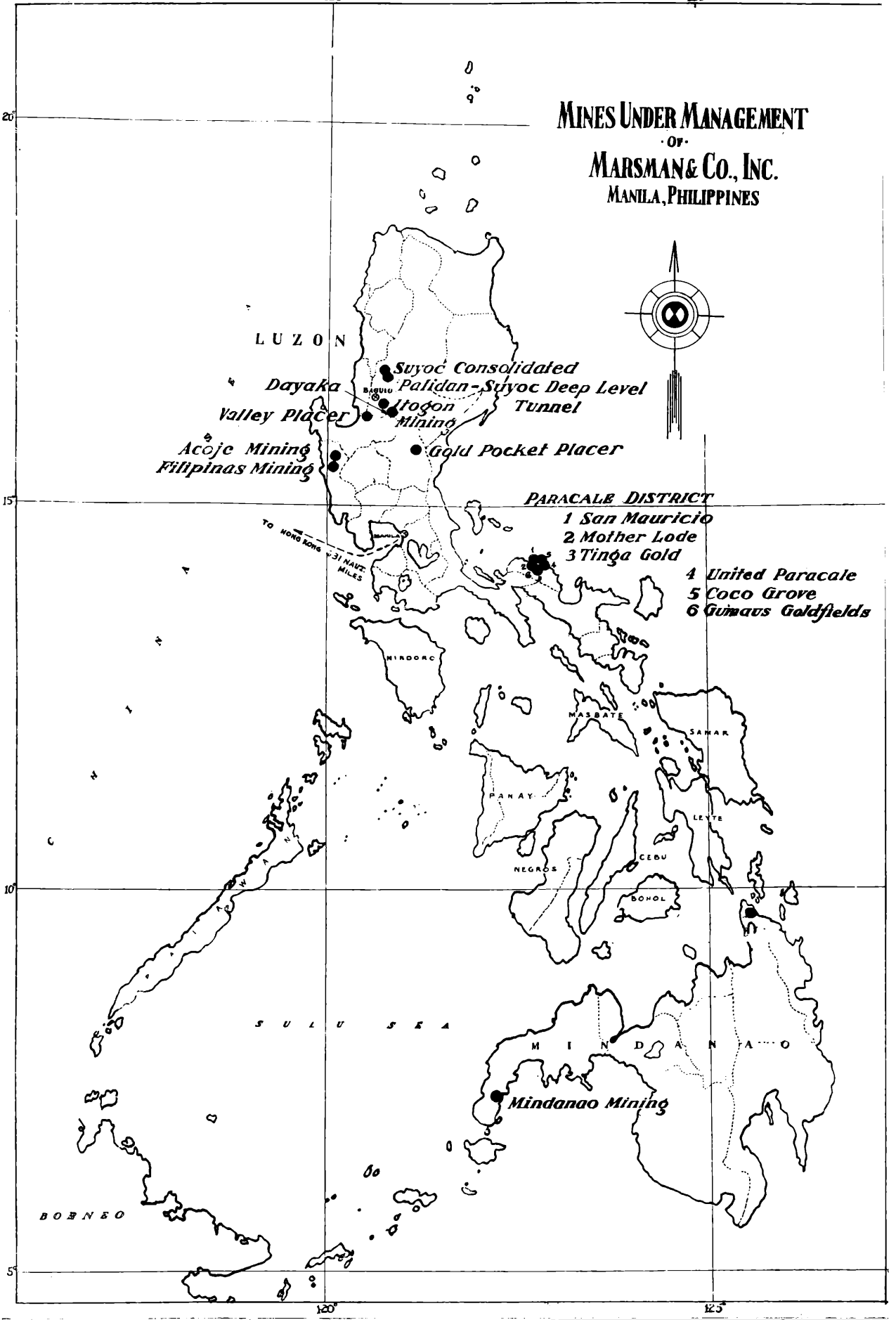
Occidental Life Insurance Company of U.S.A.

Asia Life Insurance Company

120°

125°

MINES UNDER MANAGEMENT
 OF
MARSMAN & CO., INC.
 MANILA, PHILIPPINES



LUZON

Dayaka
 Suyoc Consolidated
 Palidan-Suyoc Deep Level
 Itogon Tunnel
 Valley Placer
 Acoje Mining
 Filipinas Mining
 Gold Pocket Placer

PARACALE DISTRICT

- 1 San Mauricio
- 2 Mother Lode
- 3 Tinga Gold

- 4 United Paracale
- 5 Coco Grove
- 6 Gumaus Goldfields

TO HONG KONG 31 NAUT. MILES

MINDORO

MASBATE

SAMAR

PANAY

NEGROS

CEBU

BOHOL

SULU SEA

MINDANAO

Mindanao Mining

BORNEO

120°

125°

20°

15°

10°

5°