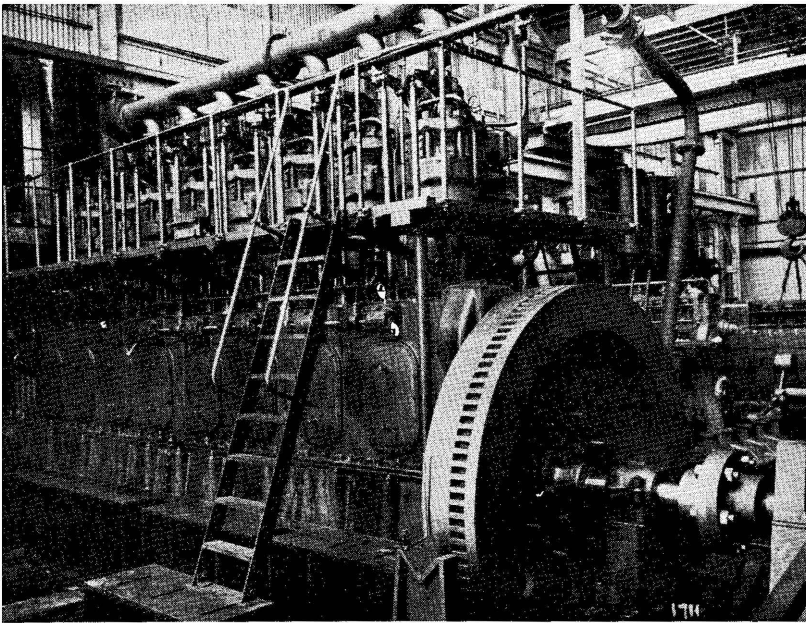


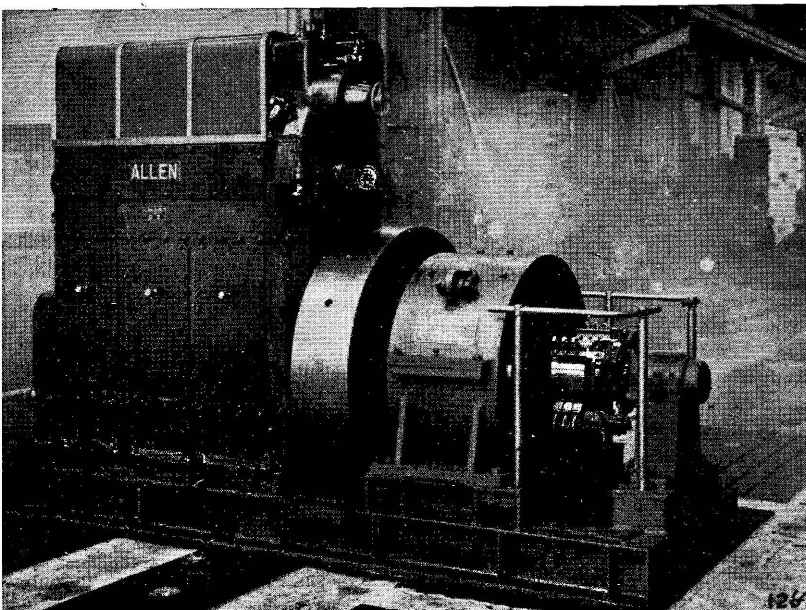
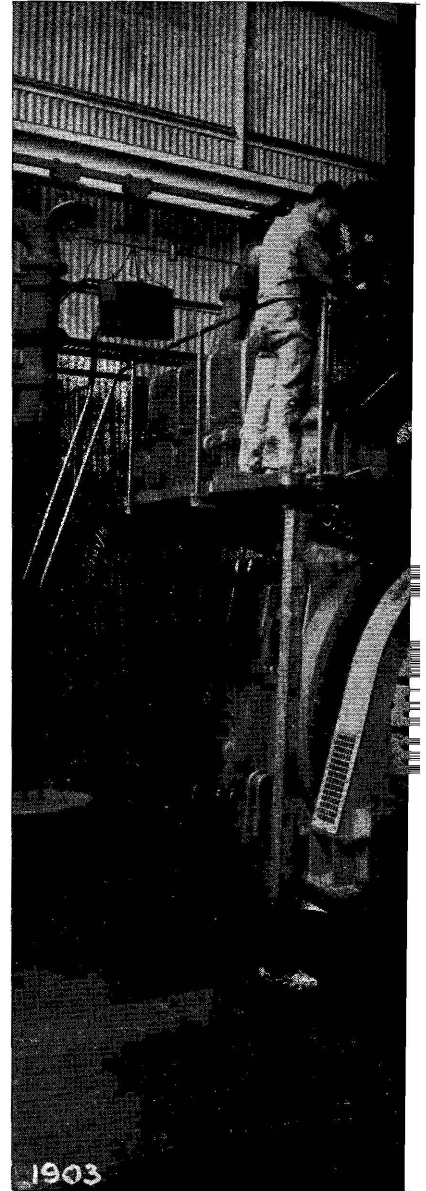
The Life Blood

Upon an unceasing and the continued operation of an for crushers, ball mills, flo pressors for drilling, for hois constantly.



Practically all of the power used by the companies under Marsman management is generated by engines constructed by W. H. Allen, Sons, & Co. Ltd., of Bedford, England, for which Marsman Trading Company is agent in the Philippines.

Seventeen Diesel units such that shown in the middle of these pages will soon be in use in the Philippines: 3 at Itogon, 5 at San Mauricio, 6 at United Paracale, and 3 at Suyoc. Of these all but two are already installed. These engines combined would generate 8,600 horsepower.



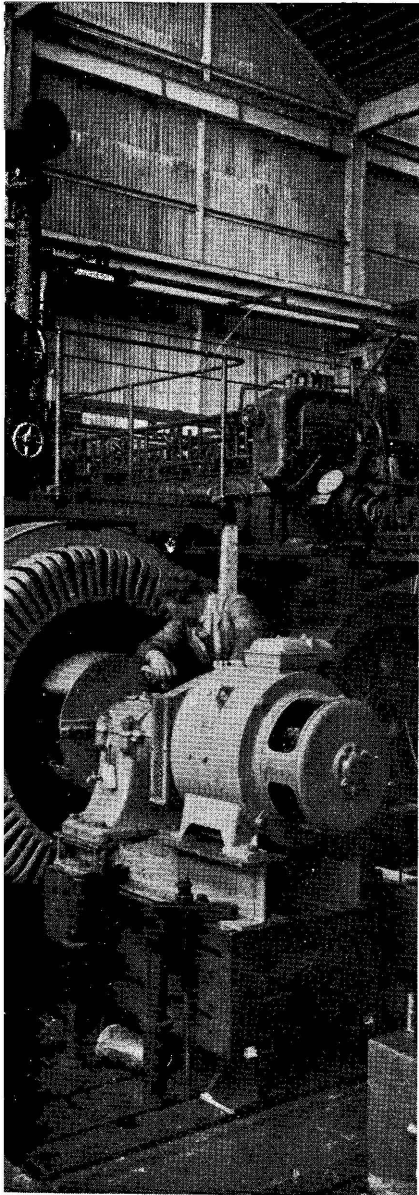
Bottom left, is a small industrial needs. It is a 6 Diesel at the bottom right unit used for driving a grav suction dredge.

An engineer from the has been in the Philippines: installation of Allen units for various concerns.

# ER

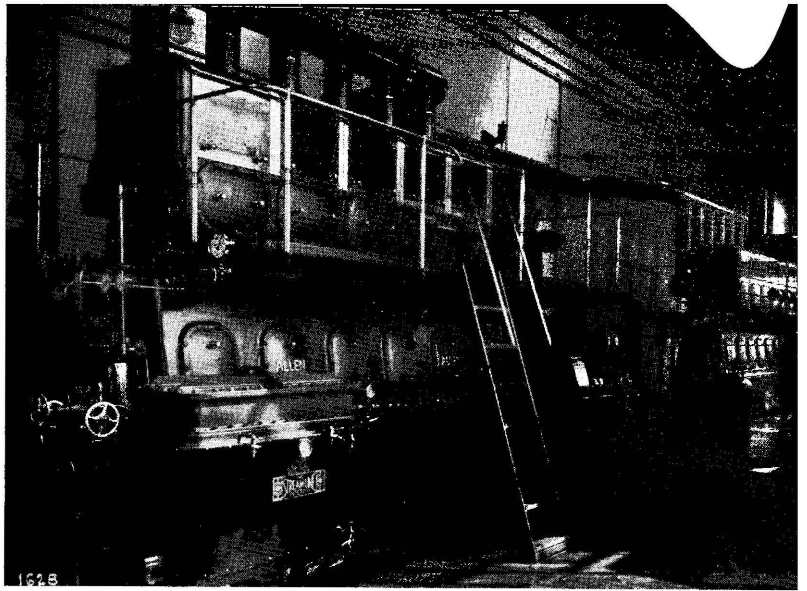
## A Mining Operation

omical flow of power depends  
rge mining enterprise. Power  
n machines; power for com-  
; for blowers—must be on tap



ty unit, for supplying small in-  
100 horsepower unit. The  
60 horsepower, 800 revolution  
mp for a placer operation or a

works, Mr. E. K. Robertson,  
out two years, supervising the  
acting as technical consultant



This unit is the 6-cylinder type. It runs at 360 revolutions per minute. In operation it has been found to be extremely economical, and is particularly suited for mining use.

Allen engines are not only used in mining plants, but to supply every demand. The engine at the upper left, of 1,000 horsepower shown under test is used in large industrial plants, such as wool mills. The picture in the upper right was taken in a water works in England, and shows a 600 horsepower Diesel for furnishing electric power for driving pumps.

