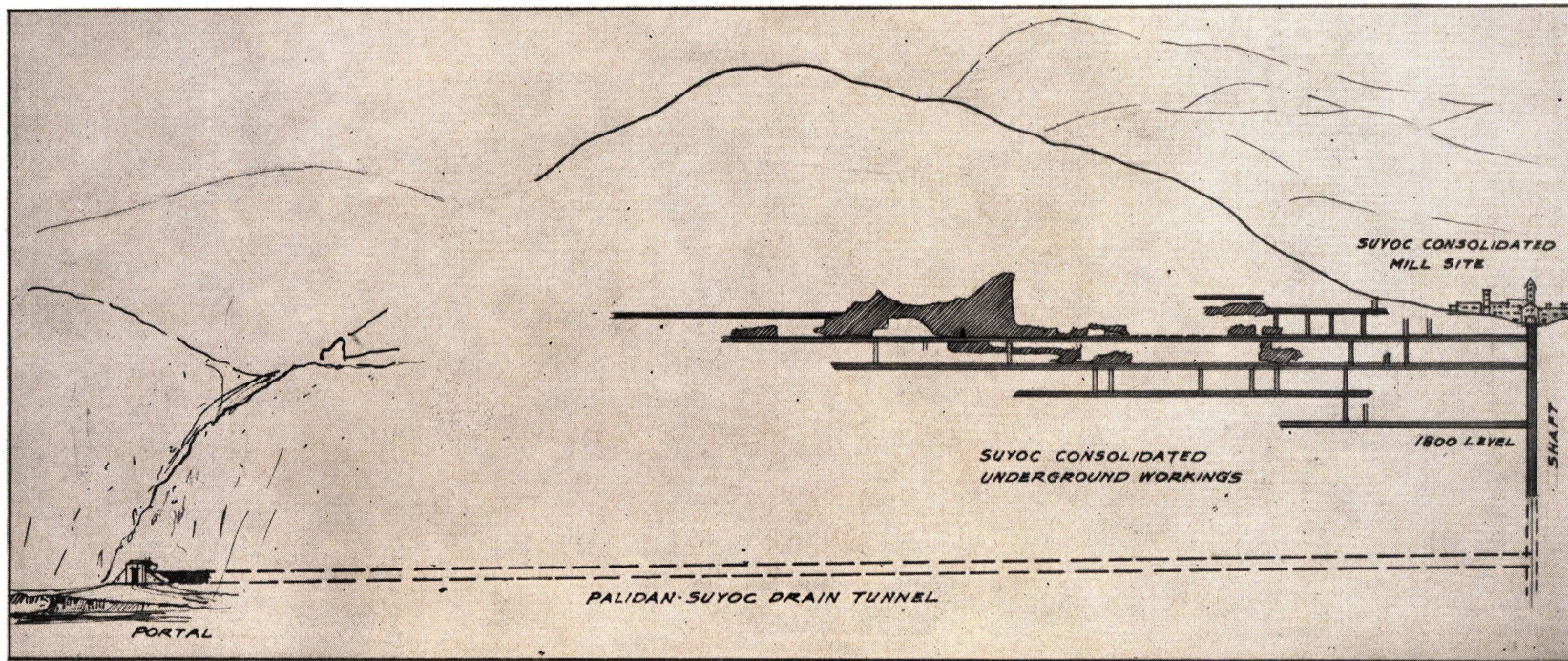


The Route of the Palidan—Suyoc Drain Tunnel



This sketch, drawn by Emilio Vito of the Manila office, shows how the Palidan-Suyoc drain tunnel will intersect the Suyoc Consolidated workings at the 2200 level—400 feet below the present deepest level. The tunnel is to be 9,000 feet long; it is already in 230 feet. The project will be completed in a little more than a year, and, as may be seen from the sketch, will permit the exploration of a considerable area. This sketch, because of space limitations, is not drawn to scale, but gives the general layout only.