

MARSMAN MAGAZINE

11

UNIVERSITY OF THE PHILIPPINES
LIBRARY

NOV 4 1948

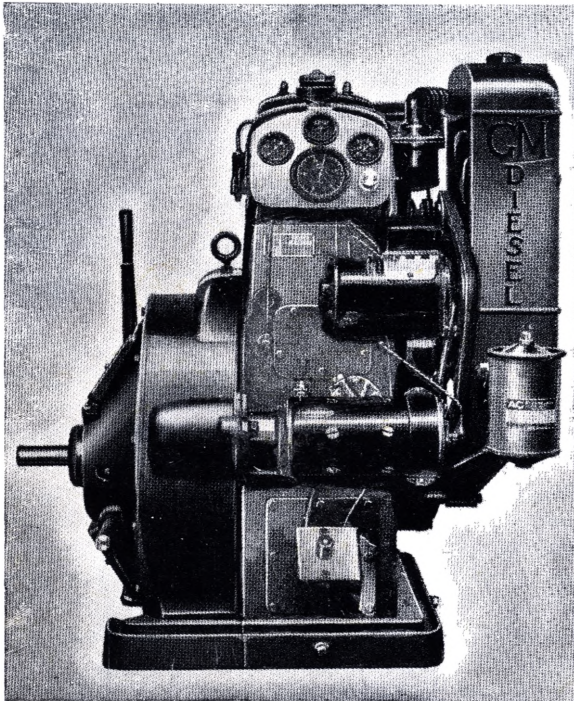
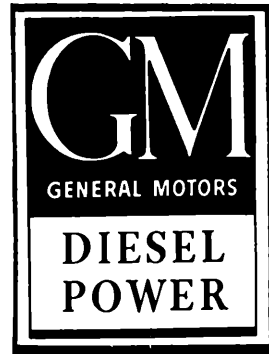


MAY
1940
Manila, Philippines

VOL. IV
NO. 11

PACKAGED POWER

Special equipment has been designed and matched with each of these GM Diesel Series 71 engines—the little brothers of the famous Streamliner Diesels that have set an 18,000,000 mile record of unprecedented performance on the railroads of America.



MODEL 1-71

o f f e r s exceptional performance in addition to economy. Now on display at the Marsman Trading showrooms, Port Area, Manila.

Manufactured by DIESEL ENGINE DIVISION
GENERAL MOTORS
SALES CORPORATION
2130 West 110th St., Cleveland, Ohio

In the Philippines:

MARSMAN TRADING CORP.

Baguio — Paracale — Cebu — MANILA — Iloilo — Davao — Bacolod

May
1940

THE MARSMAN MAGAZINE

Vol. IV
No. 11

MARSMANS RETURN TO MANILA, REPORT GROWING INTEREST IN P. I.

A growing sentiment in the United States favoring some sort of protection for the Philippines even after 1946, was reported by Mr. J. H. Marsman on his return to Manila on May 5th. Mr. and Mrs. Marsman arrived on the "President Coolidge" after a business trip to the United States. They received an enthusiastic welcome, starting with a fluvial greeting as the ship approached the breakwater. A large number of employees of the various Marsman companies went out to meet the "Coolidge" in a launch, while another group sailed around the "Coolidge" in the yacht "Nadiros".

Mr. Marsman reported that more and more interest is being shown in the Philippines in the United States, particularly in the Western section. "While the Middle West and Eastern parts of the United States are not so well acquainted with the Philippines and the opportunities here as they might be, Americans in general are coming to realize that the Philippine Commonwealth is a bright spot in the Far East today," he told reporters on arriving. Mr. Marsman told the news-

men that plans for several new industries in the Philippines were under consideration by his executives. While he did not reveal the nature of these industries, he indicated that should they materialize they will be of real importance to the economic future of the Philippine Commonwealth.

Mr. Marsman reported that labor conditions in the United States were steadily improving. Labor unrest which has been so noticeable on the Pacific Coast is being cleared up, he said, and in general the whole country is showing improvement.

Unsettled world conditions made it necessary for Mr. and Mrs. Marsman to spend some time in the United States adjusting their various interests in conform with such conditions. Because of these adjustments, however, Mr. Marsman believes that both he and Mrs. Marsman will be able to settle down in the Philippines for some time now. Miss Anne Petronella Marsman is finishing her school term in San Francisco, and will return home to Manila via Clipper in June.



*Mr. Ohnick
greet the re-
turning travel-
lers.*

MARSMAN TROPHY IS PRESENTED TO BAGUIO GOLD MINING COMPANY

The Baguio Gold Mining Company was the winner of the Marsman Trophy for safety in the mines in the Baguio district during 1939; presentation of the trophy was made on May 1 at Burnham Park, the occasion being the second Miners Annual Safety Celebration, sponsored by the Mine Operators Safety Association of Baguio.

Mr. Benj. S. Ohnick first vice-president of Marsman & Co., made the presentation on behalf of Mr. Marsman, the donor, to W. T. Graham, general superintendent of Baguio Gold. In awarding the trophy, Mr. Ohnick expressed the appreciation of the mine operators to the miners for their active interest in safety work, and in their cooperation in lower-

ing the accident frequency in the district. It was to stimulate this interest that Mr. Marsman donated the trophy, Mr. Ohnick stated; he extended congratulations to Baguio Gold for its excellent record for 1939.

More than 12,000 miners, their families and friends turned out for the celebration, which was an all-day affair.

Competition in the various events was

keen and the teams showed plainly the results of careful instruction and long practice. Two of the Marsman-managed mines had entries in the contests, Itogon and Suyoc Consolidated. The Itogon drilling team took third place, while the Suyoc Consolidated mucking team tied for first with Demonstron, being nosed out in the finals.



The Marsman Trophy, awarded for the first time on May 1 in Baguio. The winning mine, Baguio Gold, retains the Trophy for one year, and receives in addition a certificate of award for permanent possession. A similar trophy will be presented to the mine with the best safety record in the Paracale District, at the annual safety celebration to be held in September.

THE MASTER BUILDERS CO.

Cleveland, Ohio

Colored Floor Hardware

Concrete Floor Hardness

Pozzolith

Damproofing



Integral Waterproofing

Floor Protections

Philippine Representatives

MARSMAN TRADING CORP.

Baguio-Cebu-Paracale

MANILA

Davao-Iloilo-Bacolod

SUYOC SETS NEW RECORD

A new all-time high monthly production figure for Suyoc Consolidated Mining Co. marked the April operations of the Marsman managed mining companies, while the five other mines maintained their usual output. Total production for the group was ₱1,566,329, from the treatment of 58,451 tons of ore and the dredging of 339,395 cubic yards of gravel. Operations in general were normal and conditions excellent at the various camps.



Presenting the Safety Trophy. Mr. Ohnick, in front of the microphone, presents the plaque to Mr. Graham for Baguio Gold.

UNITED PARACALE MINING CO.

Gold production at United Paracale for April was ₱254,762.74, from the treatment of 9,488 tons, an average recovery of ₱26.85 per ton. Extraction was 91.32%.

Development footage amounted to 1,095, of which 704 feet were capital and 391 feet operating advance. Of the capital advance 114 feet were in ore, as were 70 feet of the operating development.

The 26 Drifts North and South, MacDonald Zero level, were started from 25 Drift South and advanced 39 feet and 44 feet respectively in low grade gold ore, but copper and silver values make this milling grade ore.

The 152 Drift North, Longos 150 level, was advanced 30 feet along the vein 3 feet wide assaying better than average.

The 201 Drift North, Longos 200 level, was advanced 4 feet, and the 201 Drift South, was advanced 22 feet along the vein 6 feet wide in slightly above average ore.

The 301 Drift North, Longos 300 level, was advanced 62 feet along the vein 6.5 feet wide in ore above average grade.

The 1 South Crosscut East, MacDonald Zero level, was started and advanced 65 feet to prospect the 26 Drift North Vein.

The Malaguit Crosscut West, Malaguit Zero level, was advanced 140 feet.

The San Antonio Countershaft, San Antonio 200 level, was sunk 18 feet, to a total depth of 21 feet below the level. The Longos Shaft No. 3, Longos 400 level, was sunk 5 feet, to a total depth of 20 feet.

The San Antonio Countershaft station, San Antonio 200 level, is completed. The Longos Shaft No. 3 shaft station, Longos 400 level, is almost completed.

North Camarines Gold Mining Co.

No capital development work was done during the month. Stopping is being carried on on 471 South Stope, Syn-

ITOGON MINING COMPANY

Production for April at Itogon totalled ₱428,454.58, from the treatment of 26,394 tons. Average recovery was ₱16.23, while extraction was 88.17%.

Development footage amounted to 4,867, of which 2,628 feet were in capital and 2,239 feet in operating. Of the capital advance, 654 feet were in ore, as were 408 feet of the operating development.

Total drifting on the Sesame 23 Vein on 7 levels amounted to 441 feet, of which 277 were in ore of average grade.

On the Gilkison Split drifting totalled 58 feet, of which 6 were in ore of higher than average grade.

The 45 Crosscut South on the 875 level was advanced 111 feet.

Drifting on 31 Vein on 4 levels amounted to 215 feet, of which 112 were in ore assaying slightly above average.

Drifting on the Taka on 10 levels totalled 580 feet, of which 167 feet were in ore of slightly above average grade, over a 5-foot width.

A total advance of 275 feet was made on the Itoe Vein, 144 feet being in ore above average grade.

The 300 level 21 Drift East was advanced 59 feet in ore higher than average over a 4-foot width, while the Drift West advanced 41 feet, of which 20 were in ore of less than average value.

All departments functioned normally during the month, carrying on routine work.

dicato level 87. Tons of ore milled for the month totalled 277.8.

General

The No. 3 ball mill was placed in operation the latter part of April. The clearing of the right-of-way of the Malaguit Road extension is completed, while the grading and grubbing is over half finished. The installation of the 500-H.P. Worthington diesel electric generating set is almost completed.

MANILA MACHINERY & SUPPLY CO.

INCORPORATED
675-681 DASMARIÑAS
—MANILA—

Exclusive Philippine Agents

FOR THE FOLLOWING MANUFACTURERS:

JEFFREY MFG. CO., Columbus,
Ohio.

Conveying and Mill Equipment

TRAYLOR ENG. & MFG. CO.,
Allentown, Pa.

Crushing and Cement Equip-
ment

**WALWORTH INTERNATIONAL
CO.,** New York City, N.Y.

Valves, Fittings, Tools

CHICAGO STEEL & WIRE CO.,
Chicago, Ill.

Weldite — Ductone Welding
Rods for all Purposes.

BUCYRUS ERIE CO., South Mil-
waukee, Wisconsin.

Gold Dredges & Excavating
Equipment

IDEAL ELECTRIC & MFG. CO.,
Mansfield, Ohio.

Alternators, Generators, Mo-
tors.

**MINE SAFETY APPLIANCES
CORP.,** Pittsburgh, Pa.

Complete Mine Safety Equip-
ment, Miner's Protective
Hats.

KIMBALL KROGH PUMP CO.,
San Francisco, Calif.

Pumps for all Mill Purposes.

THE A. LIETZ CO., San Fran-
cisco, Calif.

Complete Surveying Equip-
ment.

E. H. EDWARDS CO., San Fran-
cisco, Calif.

High Grade Wire Rope.

WRIGHT MFG. CO., 230 Park
Ave., New York City.

*Division of American Chain and
Cable Co., Inc.*

Hoists, Trolleys' Cranes.

SULLIVAN MACHINERY CO.,
New York, N. Y.

Hoists, Air Compressors, Rock
Drills, Etc.

OWEN-DYNETO CORP.

New York, N.Y.

U.S.L. Protected Arc Electric
Welders

SUYOC CONSOLIDATED MINING CO.

Gold production at Suyoc Consolidated for April was P166,708.33, from the treatment of 6,349 tons, an average recovery of P26.26 per ton, which sets a new production record for Suyoc. Extraction was 88.66%.

Development footage amounted to 1,467, of which 878 feet were in capital and 589 feet in operating. Of the capital advance 130 feet were in ore, as were 69 feet of the operating development.

Number 1 Shaft was sunk 30 feet.

The 2260 Crosscut East was advanced 50 feet and was stopped. Drifting will be started when the ventilation improves.

The 21242 Drift South has been stopped and a service raise is being run to 2000 level. The raise is on the No. 2 Vein, which is 1 foot wide and runs in average ore.

The 20262 No. 1 and No. 2 were advanced 13 and 22 feet on the No. 2 Vein, which is 1 and 1.2 feet wide respectively and runs in slightly less than average ore.

The 18270 No. 1 Drift North was advanced 19 feet on the vein which has widened to 2 feet, with ore assaying an average grade.

The 1850 Crosscut East cut the No. 4 Vein, which is 1.5 feet wide and runs approximately average. This is encouraging on the 1800, as values were not encountered in the No. 4 Vein on 1700.

The 14250 Drift South was advanced 34 feet on the vein which is 2 feet wide, and assays less than average.

An electric hoist was installed in 2246 Winze, and an electric pump will be installed in the winze pump station. A new cage was installed in No. 1 Shaft. Four hundred electric battery miners' lamps were received and are gradually being put in use.

SAN MAURICIO MINING CO.

Production for April at San Mauricio totalled P547,008.01 from the treatment of 14,397 tons. Average recovery was P37.99, while extraction was 94.73%.

Development footage amounted to 2,244, of which 1,652 feet were capital and 592 feet operating advance. Of the capital advance, 222 feet were in ore, as were 213 feet of the operating development.

In the San Mauricio Mine the South Drift on the Spokane Vein, 75 level, was advanced 44 feet in ore of better than average grade over a width of 12 inches. The North Drift on the above was driven 27 feet in high grade ore over a width of 12 inches.

The North Drift on the Spokane Vein, 300 level, was advanced 96 feet in low grade ore.

Crosscut East 2260 North to Santa Ana, 300 level, was driven 237 feet, cutting the Imbong-Imbong Vein. Samples showed average values over a width of 12 inches.

The North Drift on the Tacoma No. 1 Vein, 400 level, was driven 41 feet in low grade ore.

The 370 Pump Station on the 200 level was completed.

The Spokane Shaft was sunk 84 feet, now reaching the 400 level. The station at this level was completed. The No. 3 Tacoma Shaft was sunk 14 feet.

In the Santa Ana Mine the North Drift on the 34 Vein, 300 level was advanced 50 feet in ore of better than average grade, over a width of 12 inches.

The South Drift on the 340 Vein, 300 level, was driven 41 feet in average ore over a width of 12 inches.

Crosscut Zero East to San Mauricio, 300 level, was advanced 182 feet.

All development work continued in narrow veins, which when mined will show dilution.

The installation of the diesel electric generating set No. 7 was completed. The diesel compressor installation at Santa Ana and the new crushing plant at San Mauricio are nearly finished.



**HARD
and TOUGH!**
to do the job for you

You'll get a grinding ball that will grind better and last longer from AMERICAN FORGE. Only special analysis steel—high in carbon and manganese content—is used to produce these long-lived balls. Consequently, the finer grain structure and greater density mean that you will have less loss of grinding steel per ton of ore crushed.

**FORGED STEEL GRINDING BALLS
AMERICAN FORGE CO.**

Write for full information to

Philippine Agents

MARSMAN TRADING CORPORATION

PARACALE • CEBU • MANILA • ILOILO • BAGUIO

COCO GROVE

Production for April totalled ₱113,326.00 from the dredges "Mary Angus" and "Anne Petronella", as follows:

The dredge "Mary Angus" handled 111,155 cubic yards of pay gravel from which ₱56,230.52 was recovered. Overburden removed amounted to 55,780 cubic yards. The total area dredged was 96,300 square feet to an average depth of 46.8 feet.

The "Anne Petronella" dredged 113,405 cubic yards of pay gravel from which ₱57,095.48 was recovered. Overburden removed amounted to 59,055 cubic yards. Total area dredged was 100,630 square feet to an average depth of 46.3 feet.

The dredge "Rotterdam" handled 33,432 cubic yards, which were overburden. Total area dredged was 78,300 square feet, to an average depth of 11.5 feet.

During April the "Mary Angus" carried out operations in the old tailings area in the Paracale River bend west of the lighthouse, results being satisfactory. As expected, the dredge found virgin pay ground at several places, which were overstepped by the old Australian dredges.

The "Anne Petronella" operated along the foreshore but at the end of the month reached the area which had been prepared by the suction dredge "Rotterdam". Recovery was fair.

At the beginning of the dry season the annual overhaul on both dredges was started. Due to this necessary

TUBA PROJECT

During April the Tuba mill treated 1,829 tons of ore, from which ₱56,070.06 was produced, an average recovery of ₱30.66 per ton. Extraction was 94.0%.

The development advance was 1,057 feet, of which 511.5 feet were in capital and 545.5 feet in operating. Of the capital development 20.0 feet were in ore, as were 260.5 feet of the operating advance.

Encouraging results were encountered on the 150-foot level, by Raise 101-D, and also in stopes 102-C and 104-A. Development work is now being done on a sub-level 40 feet below the 150 level, immediately over the 204 stopes where there appears to be a split in the Rose vein. The hanging-wall or north split shows promise of producing ore.

On the 350 level results were good. A dog hole is now being driven to cut at a lower elevation a lens of high grade ore which Raise 307-A intersected.

General plant operations continued to be normal throughout the month.

work and the replacement of parts, the costs of maintenance and repairs during April were higher than usual.

The suction dredge "Rotterdam", after having completed the reclamation work in the Paracale town block, continued pumping material onto the sandbar which was extended and already now affords a considerable protection.

Weather conditions during April were favorable.

I. BECK, INC.

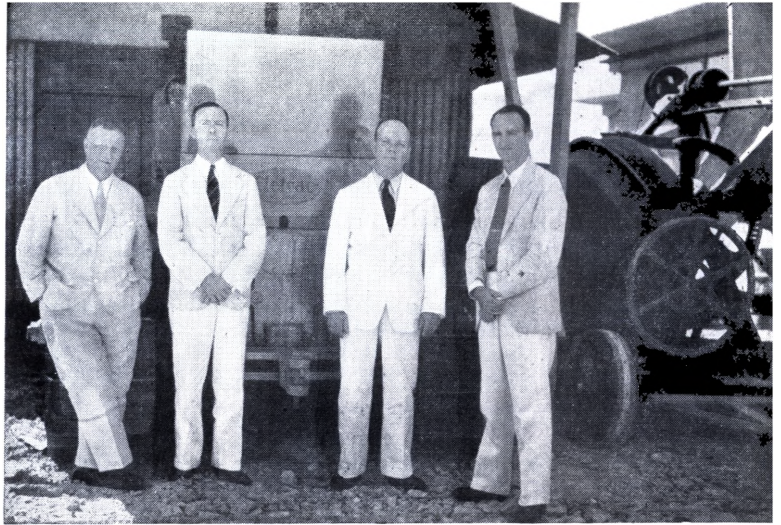
Provided Miners Since 1898
Retail & Wholesale

Wearing Apparel. Haberdashery for Men, Women & Children.
Big Line of Household goods. Radios. Phonographs. Beds. Toys.

Send for Catalogue

For Reference ask any old Mining Man

Left to right: E. V. Hahl,
C. H. Hirst, G. J. Curran,
T. Casad.



CLETRAC ENGINEER, ARRIVES IN MANILA

G. J. Curran, special representative of Cleveland Tractor Company (CLETRAC), arrived in Manila on May 5th on the "President Coolidge". He has come direct from the factory in Cleveland, where he was in charge of training salesmen and mechanics; is an electrical and mechanical engineer. He has spent thirteen years with the company, in the factory training men, as a service engineer for distributors. He has spent

several years in foreign service all over the world—South and Central America, Canada, Europe, Russia, North Africa—this, however, is his first trip to the Far East. He is here now with Marsman Trading Corporation to cooperate with them in an advisory capacity, helping potential users of CLETRAC. He intends to cover the sugar, lumber, mining, contracting and government fields.

PAINTS, VARNISHES, ENAMELS, WATERPROOFING PREPARATIONS, TECHNICAL PAINTS

To Protect . . .

To Resist . . .

To Prevent . . .

To Conserve . . .

EVERSEAL PRODUCTS ARE THE BEST

Exclusive distributors for Philippine Islands:—

MARSMAN TRADING CORPORATION, Manila.

Trade Mark Reg. U.S. Pat. Off.
Everseal
MANUFACTURING CO. INC.

*Manufacturers of Paints, Varnishes, Enamels, Waterproofing Compounds,
Technical Paints, Insecticides.*

Executive offices: Fisk Building, Broadway and Fifty Seventh Street, New York
Factory and laboratories: Ridgefield, New Jersey

MARSMAN TRADING ESTABLISHES DEALERS IN PROVINCES

In accordance with plans for the expansion of its activities, the Marsman Trading Corporation has recently undertaken a program for the establishment of authorized dealers throughout the Philippines.

Such dealers are being very carefully selected for their experience, standing in their respective communities, and progressiveness in business. They will represent the entire line of products imported by the Marsman Trading Corporation, including all types of building materials and iron and steel products; Silvertone radios; Coldspot refrigerators; Pennzoil; electrical wiring devices and fixtures; and many additional lines.

Stocks of merchandise will be carried on hand by each dealer, so that customers in the provincial areas can be served to the best possible advantage.

Upon completion of this program of dealer distribution, coupled with the branches operated directly by the Marsman Trading Corporation at such points as Baguio, Paracale, Iloilo, Bacolod, Cebu, and Davao, the Marsman

Trading Corporation will have established one of the most complete and efficient distribution systems operating in the Philippines.

Such a system of distribution will not only enable the Marsman Trading Corporation to service all possible markets, but will also add materially to the total volume of business enjoyed by the company.

A unique feature of the company's program calls for the use of a standard form of store front, not only for authorized provincial dealers, but for all of the Marsman Trading Corporation branches as well. This standard front will employ a combination of blue and silver, which are the colors of the Marsman Trading Corporation. They will be composed entirely of products distributed by the company, thus serving as a method of demonstration of such products as well as identifying the store as a unit of the Marsman Trading Corporation organization.

A typical standard store front for provincial dealers is shown below.



B E F O R E

A typical provincial business district (at Tarlac, Tarlac); the boarded-up portion is the location selected by Mr. Arturo E. Ilagan, Distributor for Tarlac province, as his headquarters store.

A F T E R

Taken a few days later, during the remodeling operations, the above photograph illustrates the remarkable transformation created by the use of the standard store front designed for all Marsman distribution outlets. The same standard plan is used by all distributors.



THE
BARCO
GASoline HAMMER

PORTABLE

ECONOMICAL

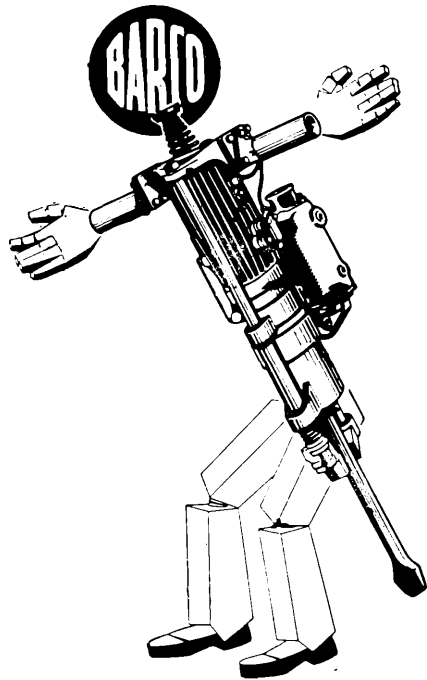
EFFICIENT

The BARCO Portable Gasoline Hammer is a one-man cutting, breaking, driving and digging tool, adapted to all kinds of jobs and all kinds of weather, and is easy for the average workman to operate. The cost of operation is small, the original cost is low, there is little capital tied up and there is no depreciation between jobs and practically no transportation costs to or from locations.

The strongest recommendation of the popularity and success of BARCO hammers is the fact that in addition to many owners who have use for only one, two or three, there are others who, after the initial purchase has proven the economies possible on a large variety of jobs, have adopted a program of adding to their hammer equipment to the extent of 30 or more machines.

If you own a BARCO your problem of quick, economical action is solved. You can take care of as many widely scattered jobs as you have hammers. Carrying a BARCO in your pleasure car or service truck means that the work will start as soon as you arrive on location.

A BARCO will work long and tirelessly with little upkeep. Put one on the job—watch it perform like a top day after day—when the work is completed, check up on the savings battered out for you. A real money saver with a nominal investment.



BARCO MANUFACTURING COMPANY

1801 Winnemac Ave.

Chicago, Ill.

Exclusive Agents

MARSMAN TRADING CORPORATION

GENERAL MOTORS DIESELS ARRIVE

Marsman Trading Corporation has just received the first shipment of General Motors Diesel Engines, and now have an engine on display at showrooms in the Marsman Trading Building, Port Area. The General Motors Diesel Engine is one of the most efficient prime movers known to man, and is now available in small sizes (20 to 165 H.P.) to meet general commercial requirements, being low cost power within the reach of all users.

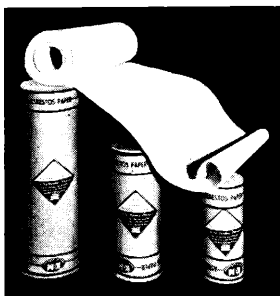
The General Motors Diesel Series 71 engines are little brothers of those famous streamliner Diesels that have set an 18,000,000 mile record of unprecedented performance on the railroads of America. They are built on the same General Motors 2-cycle principle, which figured so importantly in decreasing the weight and increasing the efficiency of the Diesel engine.

General Motors has gone far in perfecting the Diesel engine, by its development of the 2-stroke cycle principle.

General Motors elected to develop the 2-cycle principle because it offered the greatest possibilities for reducing the Diesel's size and weight and increasing smoothness—it offered a means of better employing the reciprocating action of the engine. In this type engine every downward stroke of the piston is a power stroke, permitting even smaller pistons and reciprocating parts, and hence, a smaller unit for producing the same amount of power as a 4-cycle engine. In other words a 2-cycle engine with three cylinders has as many power impulses as a 4-cycle engine with six cylinders operating at the same speed.

There is no reversal of stress in the piston and rod assembly of the General Motors 2-cycle Diesel. The piston compresses air on the upward stroke and is driven down by the burning fuel charge. The connecting rod and main bearings carry only a downward load. Consequently, they do not suffer the pounding action of engines of other types.

K & M ASBESTOS PAPER & MILLBOARD



K&M Asbestos Paper is characterized by its smooth finish, strength and uniformly white color. The reason for the high quality of K&M Paper is the fact that it is composed of pure Canadian asbestos fibre mixed with a small quantity of binding material. K&M Asbestos Paper is furnished in several grades which are suited for a variety of heat insulating purposes.

K&M Millboard is an asbestos board used as a fireproof liner for ceilings, floors, partitions, furnaces. It can also be cut into gaskets or discs.

KEASBEY & MATTISON COMPANY
AMBLER, PA.

The pistons in General Motors Diesel engines are internally cooled by an oil spray, providing controlled temperature of both the pistons and rings. This prevents breakdown of cylinder wall lubrication which causes ring sticking and scoring. It permits the use of the proper grades of standard, widely available lubricating oils sold at any filling station of reputable oil companies.

Lubricating oil in the crankcase is

maintained at the proper temperature by a heat exchanger cooled by jacket water, a feature especially desirable in an industrial engine.

Marsman Trading Corporation engineers are available to demonstrate and explain this new improved General Motors Diesel Engine, which is expected to play an important part in the industrial development of the Philippines.

Close Human Relationships

—exist between this bank and the people of this Community.

THERE are no dividing lines between the interests and welfare of this bank and the interests and welfare of its neighbors, whether or not they are customers.

Our depositors who entrust their funds to our keeping represent a broad average of the men and women of the Community. Our borrowers are men and women engaged in active business enterprises which, we feel, entitle them to the use of the bank's credit resources created with the aid of our depositors' money.

This bank, as a center of the financial interests of these men and women, makes possible interchange of practical helpfulness.

**PEOPLES BANK AND TRUST
COMPANY**

Manila, Philippines

Four Provincial Branches at your Service

Baguio, Mountain Province

Tarlac, Tarlac—San Pablo, Laguna

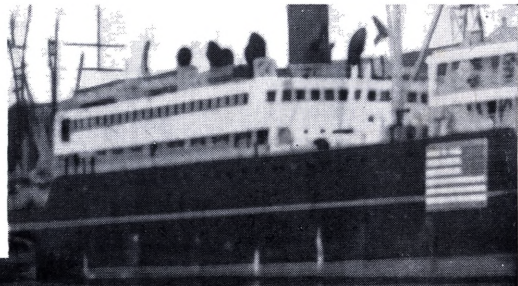
San Fernando, Pampanga



“MABUHAY” TO

Employees, staff members, and many friends turned out on Sunday, May 5th, to welcome Mr. and Mrs. Marsman

The Yacht “Nadivros” with a group of friends aboard met the “President Coolidge” outside the breakwater.



A large and enthusiastic group of employees chartered this launch to pay their respects to Mr. and Mrs. Marsman.



THE MARSMANS

back to Manila. These views show part of the welcome which the Marsmans enjoyed.

Secretary Alas was one of the first to greet Mr. Marsman.



Mr. Strait and Mr. Yaras got Mr. Marsman's views on conditions abroad.



And Pier 7 was packed to the rail as the "President Coolidge" came to her berth.

AMERICAN POTASH COMPANY LEADS IN U. S. CHEMICAL INDUSTRY

In an endeavor to acquaint our many customers in the Philippine Islands with the various manufacturers being represented by us, we are arranging to run articles from time to time in this magazine, incorporating essential details of products manufactured, scope or extent of activities, size of plants, etc., together with brief history of these suppliers.

It is felt that with this information being made available to our customers it will be the means of their receiving important details and data regarding the origin and manufacture, as well as the high standards of inspection, sources of supply, and background of the various products handled by Marsman Trading Corporation.

In this issue, the first of these articles, a brief outline of "The American Potash & Chemical Corp.", manufacturers of "TRONA" Brand Soda Ash, is presented.

AMERICAN POTASH & CHEMICAL CORP.

The American Potash & Chemical Corp. is one of the largest manufacturers of chemicals in the United States. Its plant is located at Trona on Searles Lake, California, 185 miles northeast of Los Angeles, in the northern portion of the Mojave Desert. Searles Lake is the source of the brine used by the corporation as a raw material in the production of "Trona" Soda Ash and other chemicals. The lake was first discovered in 1862, and a plant for the refining of borax was operated intermittently until 1895. The present corporation was formed in 1926, and an expansion program was soon started. The present plant employs 1,150 men, and has a capacity of 150 tons of Soda Ash per day, in addition to around 1,000 tons of other high grade chemicals.

The most modern methods of production and refinement are used in obtaining "Trona" Soda Ash from the Searles Lake brine. Every care is taken to in-

sure purity for the finished product and safe delivery to the consumer. The Trona process for the manufacture of Soda Ash (or Sodium Carbonate, its chemical name), as well as the other chemicals produced, is essentially one of evaporation followed by fractional crystallization. The brine is removed from wells sunk in the porous salt body of the lake. It is pumped about four miles to the plant where it is mixed with the various end liquors resulting from the previous operation of the process. This mixture is then fed into triple effect evaporators, and vacuum pans, which are somewhat similar to but larger than those used in sugar refineries. Triple effect evaporators are employed because of their efficiency and adaptability to the process involved. The flow of steam through these units is counter to the flow of brine so that the final evaporation is accomplished at the highest temperature. This procedure is necessary to retain the potash and borax in solution as the liquor becomes more concentrated, as these salts are more soluble at high than at low temperatures. The solubilities of the carbonate, sulphate, and chloride of sodium are relatively much lower, and the larger portion of these salts is precipitated and removed from the evaporator system by means of salt traps and filters. Potassium chloride, and borax are crystallized and purified successively from the brine solution. The sodium chloride and a chemical and mechanical mixture of sodium carbonate and sodium sulphate, having been removed from the evaporation cycle by means of vacuum filters, are processed to produce commercial soda ash and sodium sulphate products.

The various products manufactured at Trona are stored in warehouses or concrete silos especially constructed for their protection against moisture and contamination. All storage facilities are equipped with modern conveyor systems and adequate loading trucks to facilitate the handling of large quantities of salts in short periods of time. The chemicals are carried to and from

storage by belt conveyors, from which control samples are automatically secured and immediately analyzed in an adjacent laboratory. The final shipping samples are likewise automatically obtained by the continuous diversion of a small portion as it is delivered in a steady flow to the packing machines or to the cars being loaded in bulk.

An efficient research department located at Trona is constantly working on problems connected with the improvement of existing processes and products, and the development of new products.

"Trona" Soda Ash is an important chemical used in the flotation process for maintaining the alkalinity, and is well known to flotation operators throughout the mining world. "Trona" Soda Ash is a product of unusual purity. It contains no sodium bicarbonate as made, and is produced as 99.5% Na_2CO_3 , or Sodium Carbonate.

Soda Ash is the common name for commercial Sodium carbonate, which is the most important industrial alkali. For household use it is called "Washing Soda", as distinct from "Baking

soda", which is Sodium hydrogen carbonate. Soda Ash is less expensive than caustic soda, and is used for cleaning, for softening water, in glass to prevent fogging, in the wood pulp industry, for refining oils, in soaps, and it has many other applications. It is used with lime as a flux in melting iron as it greatly increases the fluxing action of the lime. The soda slag will carry as high as 11% of sulphur as compared with only 2 to 3% in the lime slag. Soda ash is a grayish-white powder or lumpy substance with a melting point of 1,560° F. It comes in two grades, containing 48 and 58 per cent of alkali, Na_2O , respectively. The 58% grade is marketed as "light" or "dense", the latter being twice as heavy per unit volume as the light. The dense variety is preferred where bulk is desired, as in glass.

A full stock of "Trona" Soda Ash, 58% Light as required in Flotation Processes, is being maintained in the Marsman Trading Corp. bodegas in the Philippine mining districts, while supplies may be obtained through the various Marsman Trading Corp. branches throughout the Islands.



**FOR RAINY SEASON
PROTECTION**

*"Filson Clothes
for the Man
Who Knows"*

Complete Stocks in
Manila—Baguio—Paracale

C. C. FILSON CO.

—oOo—

Philippine Agents:

Marsman Trading Corp.

GOOD TIDINGS FROM U. S.

The reports which Mr. Marsman brought back to Manila from the United States concerning American sentiment about the Philippines were received with considerable interest in Manila. All of the daily newspapers commented upon his views, and the

"Philippines Herald" had an editorial on the subject. Because of the unusual interest in this subject, particularly in view of world conditions at this time, this editorial is printed below for "Marsman Magazine" readers.

MR. MARSMAN'S REPORT

The report brought by Jan H. Marsman upon arrival on May 5 from a business trip to the United States to the effect that there is a growing sentiment in America favoring some sort of protection for the Philippines even after 1946 is definitely good tidings. It represents a departure from time-worn expressions of opinion in the United States about the Philippines, and indicates a very intelligent and far-sighted approach to the complicated problem of Philippine-American relations.

Beyond the father-and-son analogy given by Mr. Marsman in characterizing the concern of the United States over the security and stability of the Philippine Republic that will be born in 1946 may be discerned what the well-informed among the American people have always known but which they have been reluctant to admit in the open while there was still the hope that the Filipinos might yet be persuaded to change their minds about independence.

Now that such hope has already been completely shattered by vigorous and unequivocal affirmations of the Filipino people, and their leader, President Quezon, that complete independence is the only solution to the Philippine problem, the better-informed among the American people are now compelled to admit in the open that America has some concern over the future stability and security of the Philippines. That concern America has to have—it is not merely because of fatherly concern either.

By the very logic of events, America cannot leave the Far East, any more

than she can withdraw her interest in the fate of Europe. The entire world is undergoing fundamental changes, in some places under the impact of war and violence, in other places under the auspices of peaceful but nonetheless revolutionary changes. The Europe that was before Munich is not coming back; there will be a new order in that continent when the last bomb of this war has been exploded. The Philippines of the feudal landowners is on the way of going out; it will not return; a new social and economic order is being born here right now, under the far-sighted and statesmanlike program of government of President Quezon.

That is the major reality of our present world. In that world, the United States of America and her institutions of democracy loom large as the greatest single factor affecting the shape of the world that is to be. How can America then withdraw from any part of the world where she has her institutions established, where she has laid out over the long years the channels of her trade, where she has pioneered with vision and courage in the expectation that she might contribute a decisive part in the construction of a new world order?

No; America cannot neglect her interests in the Far East; and those interests are best protected if her foothold, cultural as well as commercial, in the Philippines is made firm by prevailing stability and security of this country.

Mr. Marsman's report about the growing concern in America for Phil-

ippine stability and security, which incidentally, according to the very phrase "beyond 1946," tacitly assumes the inevitability of Philippine independence, can only have been premised on the recognition by responsible Americans that the usual shibboleths are no longer valid.

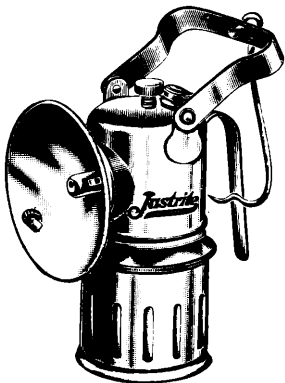
For instance, in the face of the deep interest Washington has shown in the fate of the Dutch East Indies, it does not make sense now to say that the United States should leave the Far East "lock, stock and barrel," and confine her farthest outpost to Hawaii. For another instance, in the face of the disintegrating commerce of Europe, it does not now make sense to say that the total investments of America in the Philippines are as a drop in the bucket and not worth the bother of the Asiatic Fleet. For a third instance, in view of the friendly and constructive conversations now going on in Tokyo between the American and Japanese diplomats, it does not make sense now

to affirm that the best policy for America should be to let Japan alone in the Orient lest to do otherwise would involve the United States in war.

Those were the shibboleths that had been dinned in our ears by those who would persuade the Filipinos to give up their goal of independence. Mr. Marsman, a keen business observer, a widely-travelled man who has caught the larger meaning of today's many-sided crisis, has, by his significant report, underscored the futility of all those shibboleths.

That Mr. Marsman's report is based on deep-seated conviction is, incidentally, demonstrated by his announcement upon arrival that the executives of his firm have been laying out plans for the establishment of new important industries here. Implicit in that announcement is the firm faith of a sagacious business man in the future security and stability of this country under a government completely in Filipino hands.

For 28 years JUSTRITE Miners' Lamps have given dependable service to Miners the World over



No. 50 D Hand Lamp
Eight hours of bright, white, steady light; made of steel, tinned, with bail and hook

Justrite
TRADE MARK
REG. U.S. PAT. OFF.

Write for the new catalog of Justrite Lamps—see the complete line at all Marsman Trading stores



No. 807 Cap Lamp the new streamlined type; 2-1/2 hours of efficient light on one 2-ounce charge

Philippine Agents

MARSMAN TRADING CORPORATION

PARACALE — MANILA — BAGUIO



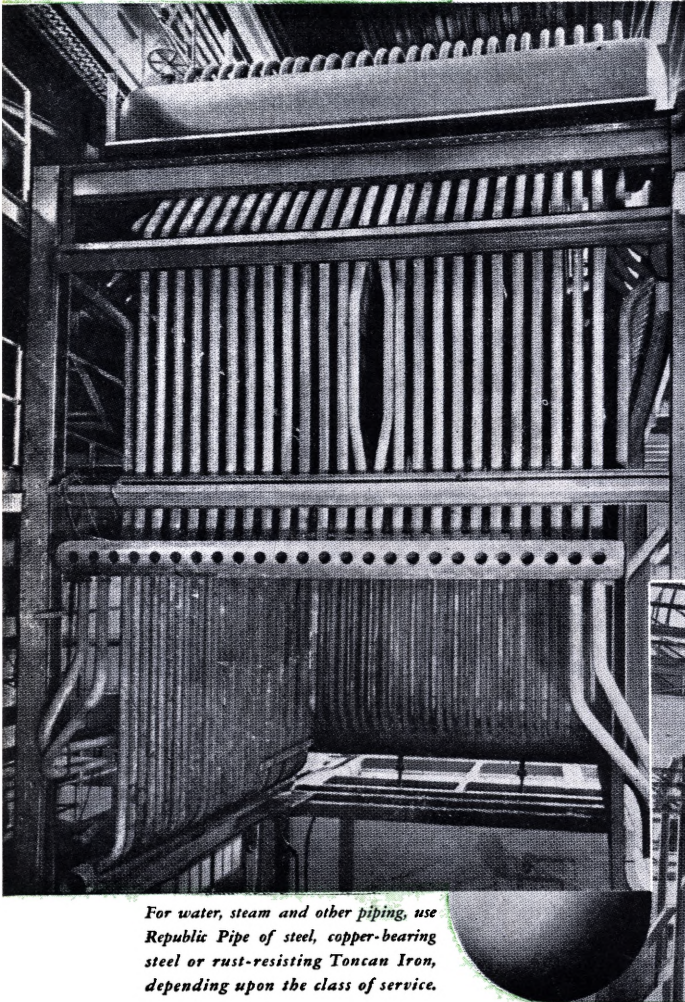
**When it's a question of
BOILER SAFETY + SERVICE + ECONOMY**

the answer is *REPUBLIC*

ELECTRUNITE

REG. U. S. PAT. OFF.

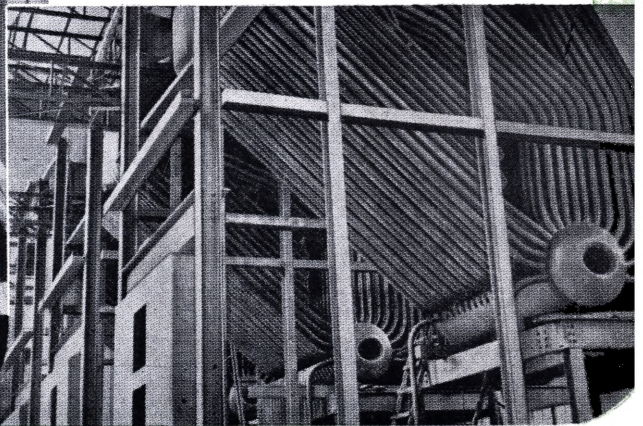
THE MODERN ELECTRIC RESISTANCE WELDED BOILER TUBES



For water, steam and other piping, use Republic Pipe of steel, copper-bearing steel or rust-resisting Toncan Iron, depending upon the class of service.

● In building these boilers — and others, too — Edge Moor Iron Works, Edge Moor, Del., used ELECTRUNITE Boiler Tubes. At the left is an 800 h. p., 400 lbs. pressure, 700° F. temperature bent water tube boiler for Chemical & Pigment Co., Baltimore, Md. Below are three 400 h. p., 450 lbs. pressure, 600° F. temperature boilers engineered by Perring and Remington, Camden, N. J., and built for Lakeland Institution, Camden County, N. J.

If you're thinking about buying a new boiler or about retubing an old one, think about ELECTRUNITE. The consistent uniformity of these modern electric resistance welded tubes — their uniform strength, diameter, roundness, wall thickness and ductility — their fine scale-free surface and freedom from hidden defects will make possible the safety, prolonged service life and economy you would like to enjoy. Millions of feet in service have proved their dependability. Countless users specify them. Leading manufacturers use them. Why don't you? See your jobber or write us for detailed facts and information. Steel and Tubes Division, Republic Steel Corporation, Cleveland, Ohio.



Philippine Representatives:
MARSMAN TRADING CORP.

PERSONALS

Charles J. Sherwood has joined the staff of Marsman Trading Corp. in charge of the Electrical Department sales. He has been in the Philippines for six years on the staff of Western Equipment & Supply Co., and has a thorough knowledge of the electrical line.

Mr. and Mrs. F. H. Burgess, of Marsman Trading Corp., together with their son and daughter, left on the "Empress of Asia" on May 13th, for the United States and Canada. They expect to be away about six months, Mr. Burgess being on vacation. A despedida was given in their honor at the Blue Room of the Army and Navy Club on the 11th of May, from 5 to 7, the staff of Marsman Trading Corp. and several officials of Marsman & Company being present.

C. C. Malmstrom and his daughter, Betty, are leaving the middle of June to catch a boat at Hongkong, sailing from there on June 20th, on a vacation

trip to the States. Miss Malmstrom intends to remain in New York to continue her art work.

C. F. Myers, former mine superintendent at Itogon Mining Co., resigned on April 9th to return to the United States.

A. F. Crosby and G. J. Scheuermann, of Suyoc Consolidated, were promoted to Acting Mill Superintendent and Assistant Mill Superintendent respectively. S. L. Rohrer, also of Suyoc, was transferred to the mill as shift boss; J. W. Harman took over the supervision of the Assay Department, during the month of April.

The General Automotive Service & Supply Co. has just been appointed the Pennzoil distributor for the Baguio district, and is now handling Pennzoil products in the Mountain Province. The company has its retail store on 57th Street in Baguio, in back of the Long Distance Telephone Co.



A "bienvenida" party was given by the Filipino employees on Sunday, May 12, in honor of Mr. and Mrs. Marsman at Quezon City. Here the guests of honor are enjoying "lechon". Left to right: A. V. Santiago, Mrs. M. Villarica, Mrs. de las Alas, Mr. and Mrs. Marsman, Miss Lily de las Alas, Mr. Strait, Mr. John O'Malley.

Dancing followed the luncheon at Quezon City. Here are the Marsmans surrounded by some of the hosts.



Mr. Robert de Vos, Managing Director of Marsman Hongkong China, Ltd., arrived in Manila with the Marsmans on the "President Coolidge", on a business trip. He left Sunday, May 12th, on the "City of San Francisco".

Mr. and Mrs. C. H. Hirst and their daughter returned to Manila on the "President Cleveland" the first part of April. Mr. Hirst is connected with Marsman Trading Corp., where he is now Manager of the Machinery & Supply Dept., due to increased activity in this line. While in the States Mr. Hirst visited the home offices and factories of several of the agencies carried by Marsman Trading Corp., obtaining up-to-date information on sales and service points.

E. V. Dahl, sales representative of the Davao office of Marsman Trading Corp., has been in Manila for several weeks, conferring with Manila officials.

Marsman Trading Corporation

Philippine Representatives for the
ATLAS POWDER COMPANY



Everything for Blasting

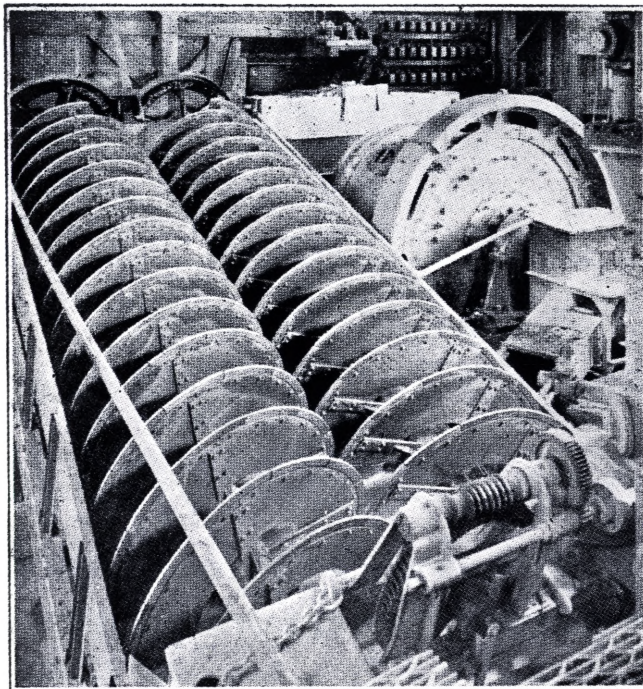
San Francisco, California

Cable Address—Giant—San Francisco, California



ATLAS EXPLOSIVES
AND BLASTING SUPPLIES

Improvements
of outstanding
superiority...

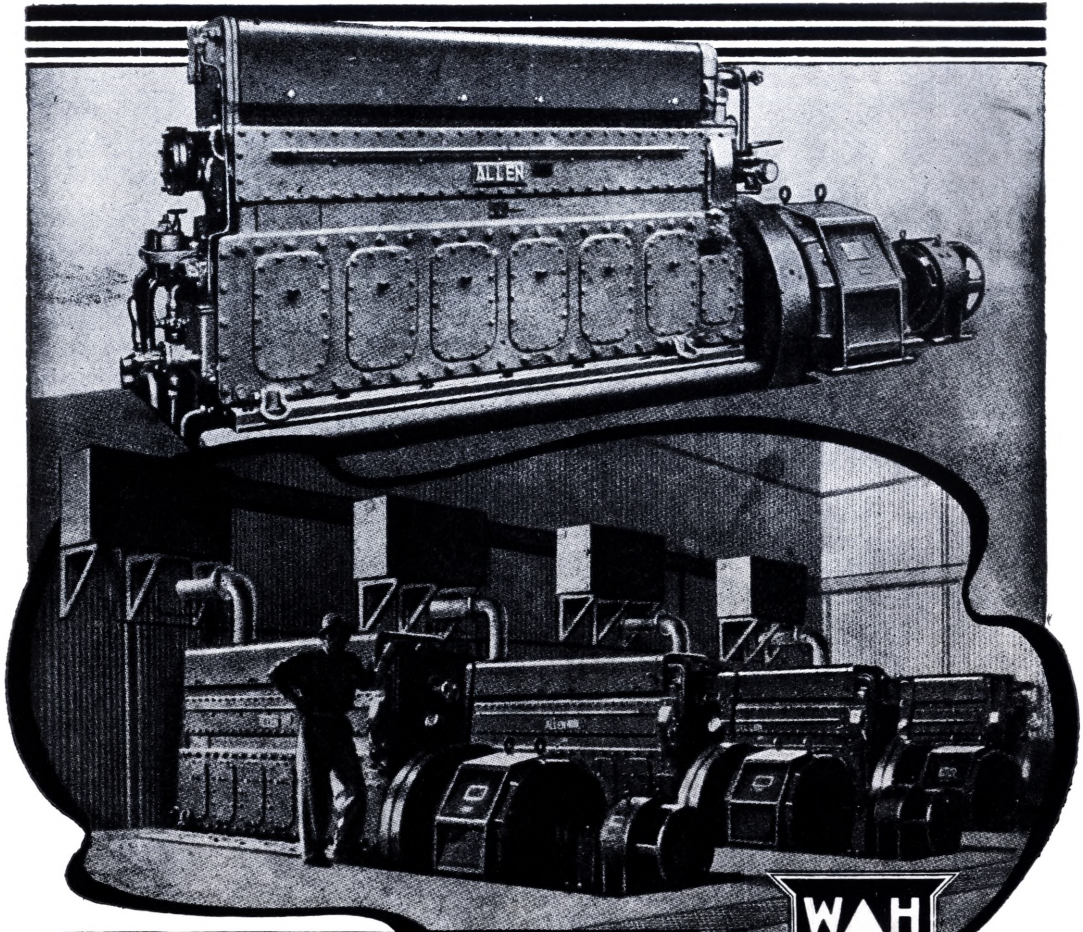


AKINS
CLASSIFIERS

COLORADO IRON WORKS

Philippine Representatives

MARSMAN TRADING CORPORATION



ALLEN OIL ENGINES

FOR INDUSTRIAL AND PUBLIC POWER SERVICES

The illustration shows four Allen engine-driven generating units installed in a Gold Mining Company's power house in South Africa. Each unit comprises a 6-cylinder, type S30-B engine running at 600 R.P.M. driving a 170 kW. alternator.

Many power units of this type are being installed for industrial, mining, waterworks, sewage works, oil field, land drainage and other requirements in various parts of the world. The range includes 2 to 8-cylinder sizes covering powers from 70-355 B.H.P.

The complete range of Allen oil engines includes units from 30-1200 B.H.P. which can be supplied with generators, pumps and equipment of our own construction for complete electric generating and pumping installations.

Write for descriptive publications and mention size of power unit interested in.

W. H. ALLEN, SONS & Co. Ltd.

TELEGRAMS
P. U. M. P. BEDFORD
- J. M. P. SOWEST, LONDON

BEDFORD, ENGLAND.
LONDON OFFICE: 5 VICTORIA STREET, WESTMINSTER, S.W.1.

TELEPHONES
BEDFORD 2201
ABB EY 2712

LONGOS POINT HEADFRAME



The new headframe at Longos Point, United Paracale Mining Company. Mat Jarvie, who is in charge of operations in this section of the United Paracale mine, is shown at the cage gate with a group of his men.

COMPARATIVE PRODUCTION TABLE

	A P R I L			M A R C H		
	<i>Tons</i>	<i>Per Ton</i>	<i>Value</i>	<i>Tons</i>	<i>Per Ton</i>	<i>Value</i>
<i>Coco Grove</i> (cu. yds.)	339,395	P .33	P 113,326.00	322,775	P .23	P 75,299.82
<i>Itogon</i>	26,394	16.23	428,454.58	27,902	14.76	411,953.32
<i>Tuba Mines</i>	1,829	30.66	56,070.00	1,807	28.92	52,280.76
<i>San Mauricio</i>	14,397	37.99	547,008.01	14,649	35.80	524,544.24
<i>Suyoc Cons.</i>	6,349	26.26	166,708.33	6,349	25.46	161,681.62
<i>U. Paracale</i>	9,488	26.85	254,762.74	9,867	25.84	255,033.43
<i>Total</i>			P1,566,329.66			P1,480,793.19

FOUR-MONTH PERIOD

(January-April)

	1 9 4 0			1 9 3 9		
	<i>Value</i>	<i>Tonnage</i>	<i>Recovery</i> <i>Per Ton</i>	<i>Value</i>	<i>Tonnage</i>	<i>Recovery</i> <i>Per Ton</i>
<i>Coco Grove</i> (cu. yds.)	P 404,186.10	1,312,870	P .31	P 358,177.32	1,295,750	P .28
<i>Itogon</i>	1,675,561.82	108,902	15.38	1,344,633.29	113,787	11.81
<i>Tuba Mines</i>	202,648.76	6,988	28.99	81,282.60	2,601	31.25
<i>Twin Rivers</i>	21,256.00	17,682	1.20	20,597.93	24,356	.84
<i>San Mauri-</i> <i>cio</i>	2,145,702.57	58,605	36.61	2,107,678.28	37,597	56.06
<i>Suyoc Cons.</i>	645,222.60	25,498	25.30	559,941.44	25,363	22.08
<i>U. Paracale</i>	1,018,539.38	38,033	26.78	951,499.08	37,006	25.71

Boyles Bros. Drilling (Philippine) Co.

MARSMAN BUILDING
Manila

Diamond Drilling Specialists

We Carry In Stock

A Complete Line of Diamond Drills
Diamond Drilling Supplies

Bortz

C a r b o n

Ready-Set Bits

When contemplating diamond drilling

Consult us

No Job Too Small—No Job Too Large

Tel. 2-32-32

A REPORT OF SIGNIFICANCE

The information brought from the United States by Mr. Marsman on his recent return, that there is a growing sentiment in America favoring some sort of protection for the Philippines even after 1946, is of unusual significance at this period in the progress of the Commonwealth. It indicates that the attitude of indifference with which the Philippine Islands has been regarded in the United States is being replaced by an intelligent appreciation of the situation in the Pacific. This new attitude has been long in coming, it is true, and still is not as widely spread over America as it should be—but it is still in evidence.

Mr. Marsman's report was most gratifying to business and political leaders in Manila, coming as it did from a man who has covered most of the United States during the past year and who has made it a point to sound out sentiment as he travelled—and to express vigorously the sentiments of the leaders of the Commonwealth. The comment expressed in the "Philippines Herald" (which appears elsewhere in this issue) is a concrete example of the reception of Mr. Marsman's report.

Marsmans Return to Manila, Report Growing Interest in P. I.	1
Marsman Trophy is Presented To Baguio Gold Mining Company	2
United Paracale Mining Company	4
Itogon Mining Company	4
Suyoc Consolidated Mining Co.	6
San Mauricio Mining Company	6
Coco Grove, Inc.	8
Tuba Project	8
Cletrac Engineer Arrives in Manila	9
Marsman Trading Establishes Dealers in Provinces	10
General Motors Diesels Arrive	12
Itogon, Suyoc Ore Reserves Show Sharp Increase	13
American Potash Company Leads In U. S. Chemical Industry	16-17
Good Tidings from U. S.	18
Mr. Marsman's Report	18-19
Personals	21-22
Production Table	26
Editorial—A Report of Significance	27
Itogon, Suyoc Ore Reserves Show Sharp Increase	28

THE MARSMAN MAGAZINE

Published each month for Marsman & Company, Inc., Marsman Building, Port Area, Manila, Philippines. P. O. Box 297.

The magazine is sent to all stockholders of Marsman managed properties and to all staff members of the companies associated with the Marsman interests.

NOTE: All ore values, bullion figures, etc., given in this magazine are expressed in pesos based on gold at \$35.00 an ounce and silver at the market price. Figures given in monthly reports are based on mine assays, and may differ to some extent from final mint or smelter returns.

SUBSCRIPTION PRICE, P5 A YEAR.

RALPH KEELER, Editor and Business Manager

ITOGON, SUYOC ORE RESERVES SHOW SHARP INCREASE

A substantial increase in ore reserves at the Itogon Mining Company and at the Suyoc Consolidated Mining Company has resulted from development work during the first months of 1940, officials of Marsman & Co., Inc., managers of both companies, reported.

At Suyoc the ore reserve estimate as of April 30, 1940 is 292,980 tons valued at ₱8,180,300, as compared to 254,230 tons valued at ₱6,762,557 as of January 1, 1940. This ore reserve figure does not include the 25,650 tons which have been mined and milled during the period. The increase in ore reserve for the period of 38,750 tons valued at

₱1,417,743 came from successful results on the 2000 and 2300 levels of the mine, the deepest workings of the property.

The increase in ore reserves at Itogon is even more pronounced, being 152,500 tons valued at ₱2,734,000 more than the estimate at the beginning of the year. The estimate for April 30, 1940 is 617,500 tons valued at ₱10,612,300, while that of January 1, 1940 was 465,000 tons valued at ₱7,878,300. Most of the increase came from the Itoe section of the mine, and from the hanging wall of the Taka lode. During the four-month period the Itogon plant treated 109,000 tons of ore.

Call

Cardinal Insurance Company

**When You Need
INSURANCE**

**HEAD OFFICE:
MARSMAN BUILDING
MANILA, PHILIPPINES**

**Cable Address:
"CARDINAL—MANILA"
Post Office Box 297
Phone 2-32-32**



SAVE OIL

**REDUCE
ENGINE
WEAR**

WITH

STREAM-LINE FILTERS

- **At the United Paracale and San Mauricio Power Plants and many other Philippine Diesel installations, Stream-Line filters keep operating costs down.**

Made by: The Stream-Line Filter Co., Ltd., London

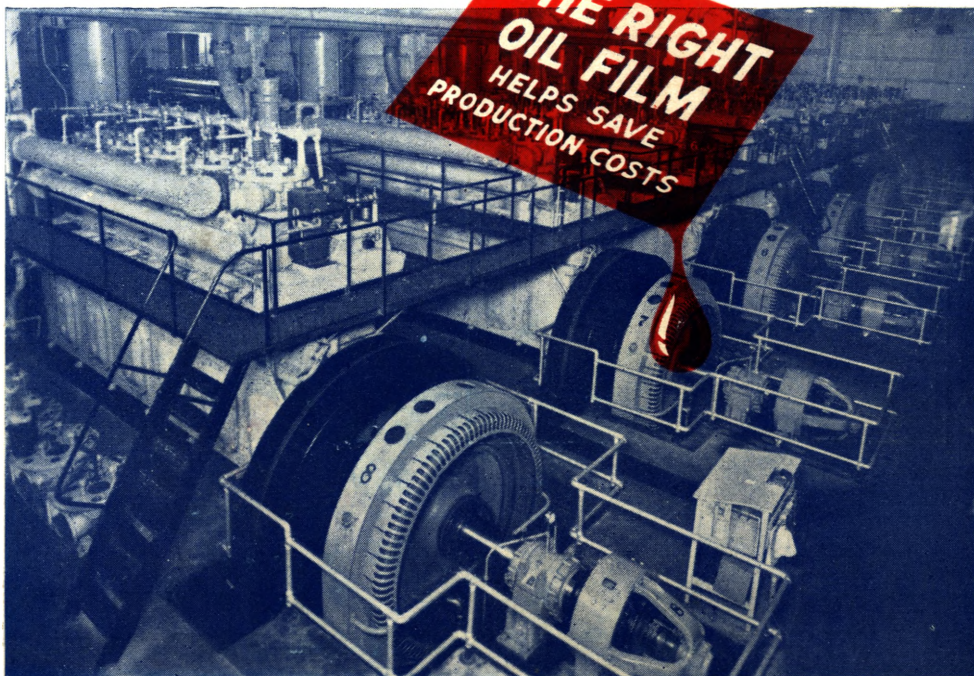
SOLD IN THE PHILIPPINES BY:

MARSMAN TRADING CORPORATION

Gargoyle D. T. E. Oils

Keep Piston Rings Active!

*Courtesy of
Balatoc Mining Company*



What does that mean for
Diesel operators?

Full compression.
Full power.
Maximum efficiency.
Low operating costs.

CALL IN STANDARD-VACUUM FOR

Correct Lubrication



Carmelo & Bauermann, Inc.