

# COME, WORSHIP THE LORD

## Chalices

CHALICE IS A CUP USED TO HOLD THE WINE TO BE CONSECRATED AT MASS.

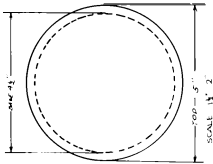
IN ANCIENT TIMES A GREAT VARIETY OF MATERIALS WERE USED FOR THE CHALICE, AMONG THEM GLASS, WOOD, ROCK CRYSTAL, HORN, MARBLE, AND LEAD. GOLD AND SILVER HAVE ALWAYS BEEN FAVORED AND UNTIL RECENTLY HAD BECOME THE STANDARD ONES USED IN MAKING CHALICES.

TODAY, HOWEVER, ANY DECENT MATERIAL MAY BE USED, PROVIDED THAT IF THE MATERIAL IS ABSORBENT THE INTERIOR SURFACE OF THE CUP BE INLAID WITH NON-ABSORBENT MATERIAL.

THE FOLLOWING ARE SAMPLES OF THE SACRED VESSEL DESIGNED BY J. T. LEE, M. M. YLLANA AND R. O. LORENZANA.

"CHALICES AND PATENS MAY BE MADE OF MATERIALS OTHER THAN THE CUSTOMARY, PROVIDED THEY ARE SOLID, DIGNIFIED AND NON-ABSORBENT."

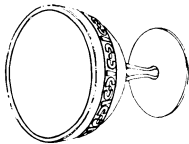
"...CHALICES MAY BE MADE FROM ANY SOLID, NOBLE, DURABLE AND NON-ABSORBENT MATERIALS AND THAT THE CUSTOMARY GILDING OF THE CUP'S INSIDE IS NOT REQUIRED UNLESS THE KIND OF METAL USED IS LIABLE TO RUST."



SCALE 1/4" = 2"

PLANS

PERSPECTIVE



# chalice

## CONTEMPORARY STYLE

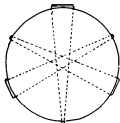
The Chalice is of gold, with a gloss finish. The inner surface of the cup is enameled. The design which is soldered around the cup is a simplification of the fleur-de-lis, a symbol of the Holy Trinity.

Submitted by:  
JOSE T. LEE





• PERSPECTIVE •

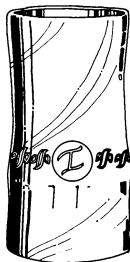


• PLAN •

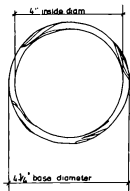
## "CHALICE"

The cup is welded to the base just as the three legs are welded to each other. It is made of gold in glossy finish. The tripod symbolizes the Blessed Trinity.

SUBMITTED BY:  
MILAGROS M. YLLANA



PERSPECTIVE



PLAN

## "CHALICE" MOTIF: BAMBOO

The design is based on a bamboo stem. Made of polished gold, it has incised carvings of doves & a symbolized letter "K". It is to be cast in one piece.

SUBMITTED BY  
RAMÓN O. LORENZANA