

# Australian Consultants Offer Their Services

The advisory and supervisory services of Australian professional consultants today are being used all round the world on projects in areas as widely separated as South East Asia, Africa, South America and the Middle East.

Urban and regional planners, surveyors and quantity surveyors, engineers, architects and agricultural consultants have for the past five years contributed substantially to developmental changes in these areas.

Significant works include highways in Thailand and Hong Kong, viaducts in the New Hebrides, hospitals in Iraq and Borneo, and water supply installations in Indonesia and Vietnam.

Australian agricultural consultants are working in Kenya, Thailand and South America; a feasibility study has been completed for the development of a beef industry in Western Samoa. In South-East Asia an Australian group is participating in a regional transport study; mining consultants are working in a number of countries; and management and industrial consultants are advising on the development of industries in South-East Asia.

In overcoming the uni-

que problems of her environment, Australia has developed skills and techniques which have particular applications to countries now developing their own resources and expanding their industries. It is in this area of activity that Australian professional consultants are making a significant contribution.

Two years ago the Australian Professional Consultant's Council (APCC) was formed to advise the Government and the professions on the export of these services, and also to help harness Australian consultancy resources for the tasks at hand.

Within the structure of the APCC are independent, private enterprise companies which do not have a vested interest in any one



This Australian survey party moves through some rugged terrain in Queensland to help set up a microwave link.

method of construction or type of contract. This means they are free to offer their clients objective opinions as to the most suitable and economical way of going about a job.

Because they are independent, they can also negotiate and administer contracts and invite competitive tenders on behalf of their clients.

The council has 150 member firms, with an immediate staff availability of 4,000. The number

of poly-professional groups embracing all the planning and construction skills is increasing daily. These groups are able to advise on any survey and construction project, within or outside Australia.

#### THE ENGINEER

Australia's consulting engineers offer services in all of the engineering disciplines — civil, mechanical, electrical, structural, chemical, mining and transportation.

Within these broad

categories many consultants are operating in such specialized fields as soil mechanics, foundation engineering, air conditioning, hydro-electric, water supply, sewerage, and bulk material handling. In addition, there is an increasing demand for engineering services in planning and related economic matters.

Of all the developments which have taken place in Australia in recent years mining and the discovery

Compliments of—

## LILESTONE & CO., INC.

Philippine Distributors of—

- \* FULTON complete sugar cane mills & accessories
- \* KEELER steam boilers & packaged generators
- \* HULL transfer and compression molding presses
- \* MARTIN-BLACK steel wire ropes — "speedwell"
- \* McNAMEE-WOLLARD passenger aerobridges & baggage-cargo handling equipment
- \* RODGERS hydraulic presses crawler tractor rebuilding equipment
- \* ROGERS low bed heavy duty trailers
- \* RICHMOND hand-operated pallet trucks
- \* SIMPLICITY gyrating & vibrating screens
- \* STENNER sawmill & woodworking machines
- \* TRAYLOR jaw crushers, gyratory crushers, ball mills, rotary kilns
- \* VICTRENE foil printing machines
- \* SCHRAMM portable & stationary air compressors, blast hole & water well "Rotadrills" (crawler & truck mounted), "Pneumattractors" & Construction tools

R-102, MOSERCO BLDG.  
107-10TH ST., PORT AREA  
P.O. BOX 3388, MANILA

CABLE ADDRESS:  
LILESTONE — MANILA  
TEL. 47-29-53

of off have captured the public imagination to the greatest extent. All the major firms in these fields have commissioned consulting engineers.

The vast Snowy Mountains hydro-electric scheme turned the attention to get greater use from them for both farm production and power generation. Australian engineers who worked on this and other large development projects are now advising on similar projects undertaken and financed by the United Nations Development Programme, The World Bank and the Asian Development Bank.

of statutory planning schemes, to the planning of new towns.

Their work is not confined to the physical aspects of these projects, but begins with initial feasibility studies and continues through to encompass the problems of finance and administration.

**THE QUANTITY SURVEYOR**

Quantity surveying in Australia is a well-established profession and quantity surveyors are integral members of the building design and construction team.

Training of quantity surveyors is available in universities and technical colleges.

Quantity surveyors are building economists who, by virtue of their specialist training and experience, have developed a full knowledge of construction economics which enable their services to be used in all form of buildings, civil engineering works, land use generally, and town planning.

They provide advice on probable project costs. Cost planning and analysis is then developed, enabling a budget to be established

and schemes designed and erected within an approved expenditure.

Advice is given on tendering procedures and contractual arrangements, and bills of quantities are prepared in forms most suited to particular circumstances.

**THE SURVEYOR**

Australian surveyors are independent professionals who provide services of the highest precision.

Geodetic surveys are used for scientific purposes and civil engineering projects, using electronic

measuring equipment. Engineering and topographic surveys are used for civil engineering, mining, forestry, and town planning mostly using vertical aerial photography.

A large area of development where the surveyor is an integral member of a group of professional consultants is in ground surveying related to civil engineering. Multi-storey buildings in particular exercise his skill throughout the course of the contract because of the high precision required in checking vertically and

(Continued on page 12)

**ARCHITECTS**

Each year Australia spends more than \$A1000 million on building. Architecture has developed to the stage where the largest and most complicated buildings are being designed and constructed.

The country's 4000 architects design for the tropical conditions of the north, the hot dry inland regions, and the snow country of the southern alps, as well as for the more temperate areas.

Because it is a big country with development projects often in remote areas, architects are accustomed to carrying out work at considerable distances from their offices. Australian architects have already undertaken work in other countries, including the Middle East, Hong Kong, Malaysia, Fiji, Singapore, Thailand, New Zealand, and New Guinea.

The Australian architect offers his clients his skill in analyzing their requirements and thus establishing an exact brief, and then his talent in designing the complete building which will fully satisfy those requirements. He offers his experience of building materials and methods, his skill in preparing the contract documents, and his integrity in administering the building contract.

**THE TOWN PLANNER**

The growth of the city and regional planning profession has been very rapid in Australia during the past 20 years. Effective town planning legislation now exists throughout the country and plans have been prepared for all metropolitan cities and for many smaller cities and towns.

The country's rapid economic development has provided many opportunities for Australian planners to develop their skills in a variety of fields, and a growing group of consultant firms is working in the profession.

The projects they undertake range from comprehensive schemes of redevelopment in the central areas of large cities, through the design of residential and industrial estates and the preparation

**FOR BETTER CONTROL OF**

**... Heat**

**... Cold**

**... Sound**

**ACI FIBREGLASS**

**BUSINESS AND INDUSTRY**

**TRANSPORTATION**

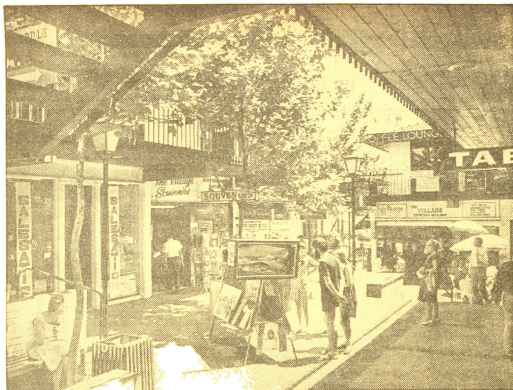
**HOUSING**

**APPLIANCES**

**BY LAND, SEA, AIR**

**R.L.G. R.L. GARCIA & COMPANY**  
 310 Campos Rueda Bldg., Tindalo, Makati  
 Comm'l. Center P.O. Box 242, Makati, Rizal, D-708  
 Tels. 56-55-55 • 56-54-51

**Industrial Aids, Inc.**



**Kings Cross Village Centre** — The village centre at Kings Cross Sydney, has won the Civic Design Award of the Royal Australian Institute of Architects for two-level design. The architects Devine, Enby & Stowe of Nth. Sydney, set out to capture the unique character of Kings Cross.

## Australian Consultants Offer Their Services

(Continued from page 7) in using the modern instruments developed for this purpose.

### THE AGRICULTURAL CONSULTANT

Offering a wide range of skills acquired in an environment which is both physically and financially demanding efficiency to survive, agricultural consultants generally have a university degree in agricultural sciences, and have also specialized in the wide range of associated skills which are necessary to build a strong rural economy.

Consultancy services in finance and management, soil conservation and land use, crop husbandry, animal husbandry, pasture development and management, and the use of irrigation resources are available. Allied to this exper-

ties is the provision of agro-economic studies.

Institutional bodies of world repute provide resources for the planning, execution and operation of such large scale projects as river basin development. An Australian Organization has been selected by the Food and Agriculture Organization of the United States, such a major project in Ethiopia and has already begun the task.

Australian agricultural consultants have been active overseas, particularly as advisers to United Nations Development Programme projects in Africa, Asia and South America.

Additional information and literature on Australia's consultancy services are available from Australian Development Committee, High Commission or Embassies in most countries.

## Supply Parts

(Continued from page 8)

to clutches, propeller shafts and gaskets, are fitted as original equipment to virtually every popular car made in Australia.

The company also makes garage equipment and machinery for reconditioning engines. Its garage machinery ranges from wheel balancing equipment to a battery charger and precision tools.

As well as being one of the largest suppliers of replacement parts the firm makes a range of accessories including rear vision mirrors, reflectors, safety bells, luggage racks and car fans.

The world's largest tyre manufacturing and machinery far reconditioning engines. Its garage factorer (b) also traces its origins in Australia back a long time — 43 years. It has now grown to a vast complex making not only tyres but fan belts, brake linings, batteries and shock absorbers. It has two factories near Sydney and close to Melbourne, employing a total of 2,700 people.

The firm exports tyres to the United States, home of the parent company. A nation-wide strike in U.S. tyre factories several years ago, forced the firm to ask its subsidiaries to ship surplus production to the U.S. The quality of the Australian-made tyres found ready acceptance and the firm has been shipping to America, at the rate of 2,000 tyres a day, ever since.

A manufacturer which invaded the Australian motor scene only 10 years ago, has had an equally successful run.

The company (c), which makes windscreen wiper arms, blades and motor air horns and mirrors started from scratch in 1959. Its products are now fitted as original equipment to nearly every Australian made car and the firm has a commanding position in New Zealand. It is also looking to the South Pacific and South East Asia to expand its markets.

Australian spare parts and accessories are fast gaining a world-wide reputation for quality, reliability and technical sophistication. The industry is confident and the keynote is on expansion both at home and overseas.

Rapco, Australia's largest manufacturer and supplier of original equipment to vehicle manufacturers, also exports its products throughout the world. If you are interested in the world's widest range of quality auto components and garage equipment at competitive prices, backed by reliable service facilities, comprehensive catalogues and vital after-sales service, visit us.

# Rapco

WORLD'S FINEST RANGE OF AUTOMOTIVE SERVICE PARTS & EQUIPMENT

ENGINE & ELECTRICAL

BRAKE

TRANSMISSION

EXHAUST SYSTEMS ACCESSORIES

TOOLS & EQUIPMENT

Local Agents: FRABINTI ENTERPRISES  
P.O. Box 483, Manila