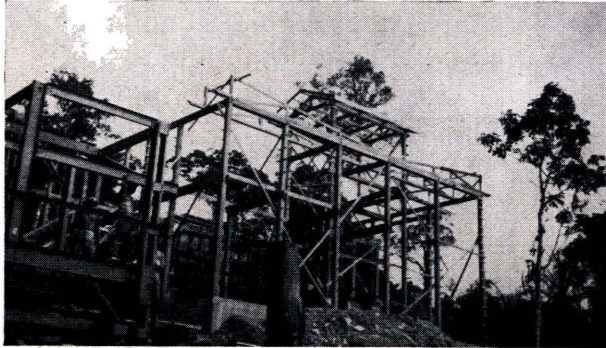
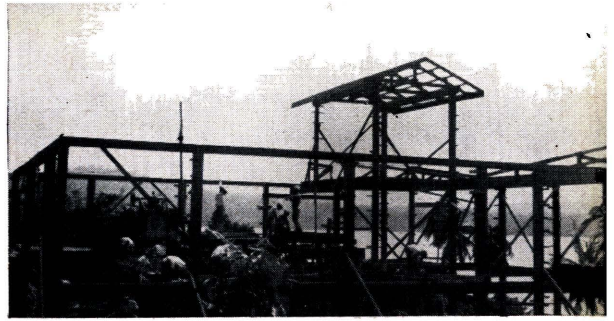
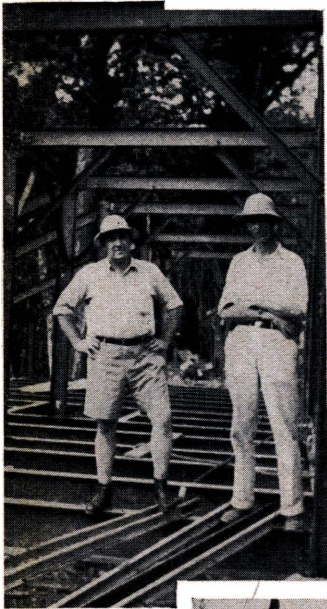


*The new Smelter at Mambulao takes shape.*



*Rapid progress is being made in the construction of the 50-ton Smelter at Mambulao, near the San Mauricio Mining Company. These pictures were taken by William Barr, son of*

*the San Mauricio general superintendent. At the top may be seen the outlines of the sample mill and pressing plant...The next picture shows a different view of the same unit with part of the Smelter itself at the left. In the center Clarence Weekley, general mill superintendent for Marsman and Company, is discussing the project with S. W. Norton, who is Mr. Weekley's assistant in the supervision of the Smelter construction. Mr. Norton will be Smelter superintendent. He has had considerable smelting experience in Montana, Utah, and South America. Mr. Weekley himself has had some twelve years of smelting experience in Arizona, Mexico, and South America. The two bottom pictures show the steel structure of the varied buildings, which will comprise the Smelter plant, being placed in position. The Smelter buildings, of course, are*



*entirely of steel construction. It is expected that the Smelter will be completed by the first part of May.*

