

## LITURGICAL SECTION

### COME, WORSHIP THE LORD

IN RESPONSE TO VARIOUS REQUESTS AND OUR DESIRE TO HELP PASTORS AND CHAPLAINS MEET THE VARIED LITURGICAL NEEDS BROUGHT ABOUT BY THE APOSTOLIC CONSTITUTION *ORDO MISSAE* ISSUED BY POPE PAUL VI LAST YEAR, WE ARE STARTING WITH THIS ISSUE A NEW FEATURE IN THIS SECTION.

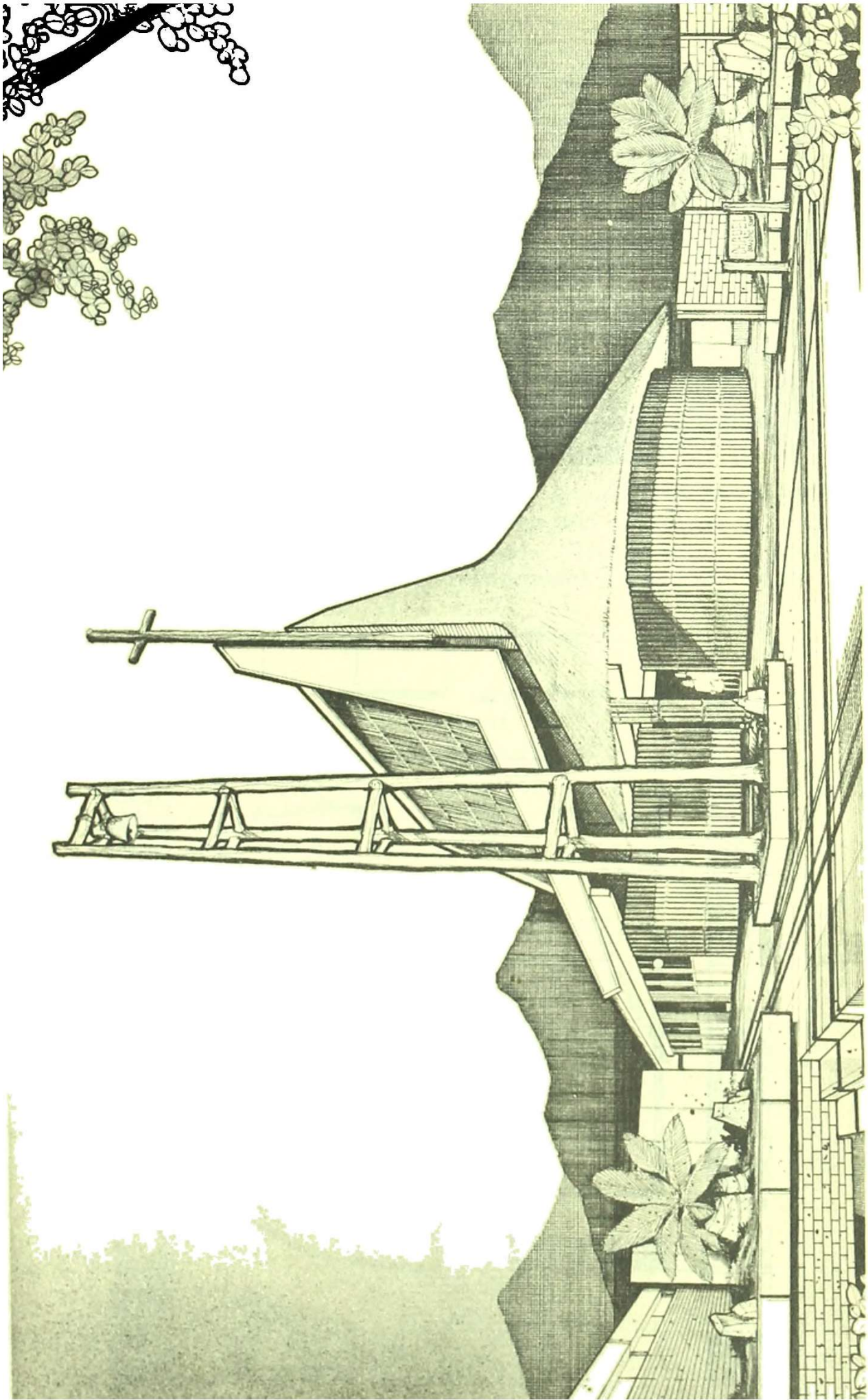
DESIGNS OF CHURCHES, CHAPELS, ALTARS, CHALICES, LITURGICAL VESTMENTS, ETC. WITH EMPHASIS IN THE USE OF LOCAL MATERIALS WILL BE REGULARLY PUBLISHED IN COLLABORATION WITH THE UST COLLEGE OF ARCHITECTURE AND FINE ARTS.

IT IS HOPED THAT THIS NEW FEATURE WILL CONTRIBUTE TO A MORE UP-TO-DATE APPLICATION OF LITURGICAL REFORMS ALONG A TRULY GENUINE AND NATIVE LINE.

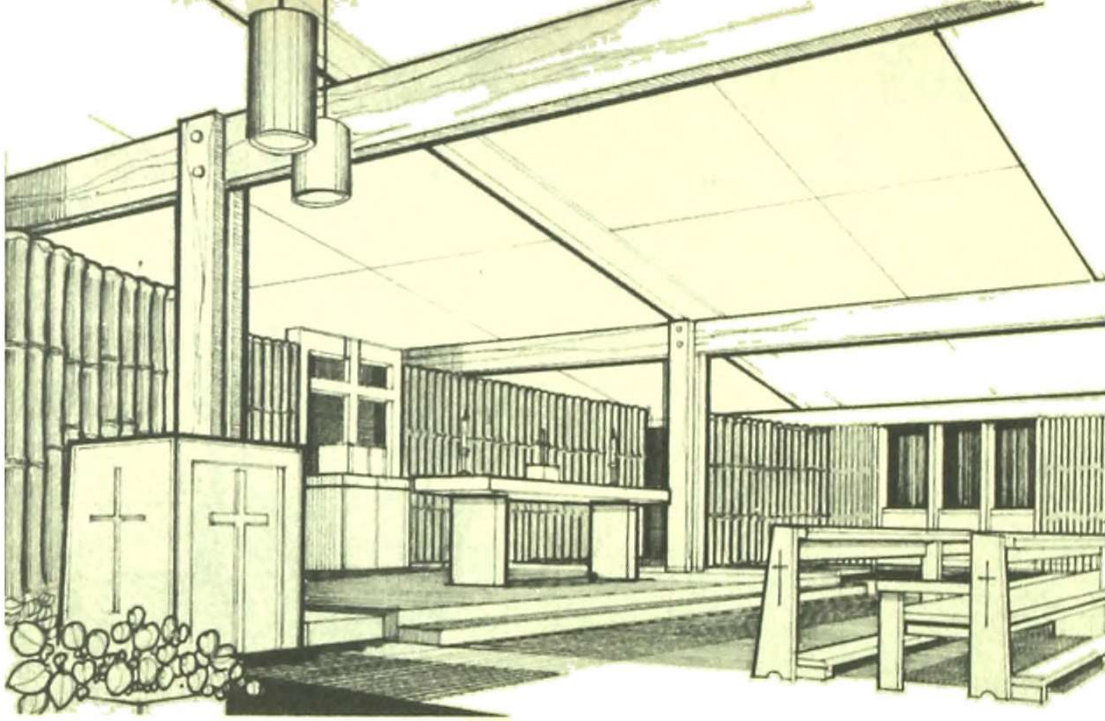
---

### A Barrio Chapel

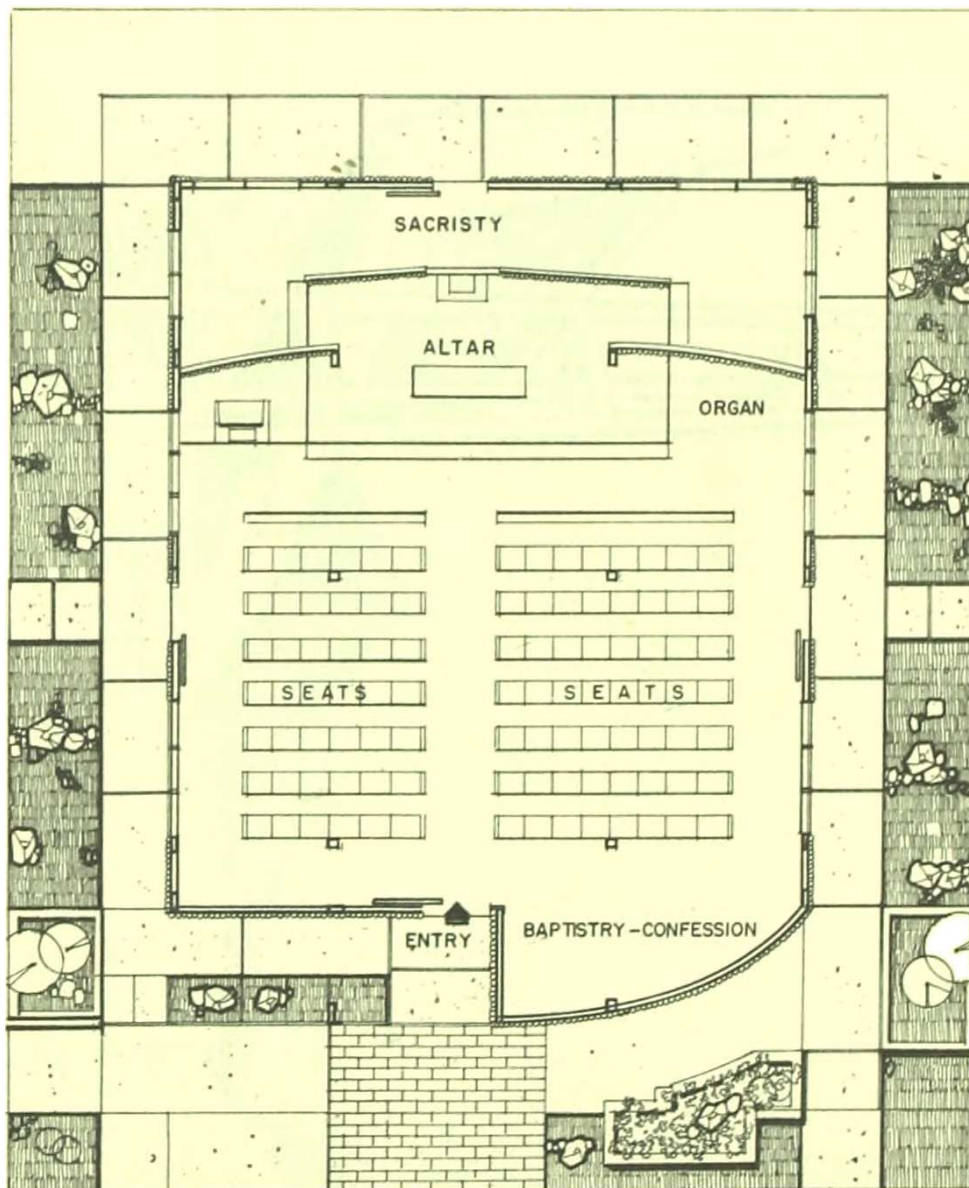
Our initial feature is a barrio chapel designed by Mr. Camilo R. Santos, a senior UST architecture student. Considering the needs of a small rural community where local materials like wood, bamboo and nipa are abundant, our designer submitted this contemporary plan adopting an architectural form characterized by a steep Malayan roof.



**PERSPECTIVE**



**INTERIOR VIEW**



**FLOOR PLAN**

The structural framework is of unhewn tree trunks and bamboo. The exterior cladding is made of bamboo splits while the interior wall is of sawali. For purposes of durability though, locally manufactured concrete hollow blocks, brick and other masonry materials could be utilized. The roof is of cogon grass or nipa and the sliding doors are of bamboo strips. Capiz shells are extensively used for the windows.

A three-post structure of unhewn tree-trunks anchored to a concrete footing serves as a handsome belfry.

Following the suggested specifications, the whole structure could approximately cost from P15,000 to P20,000 depending upon the locality and the availability of materials. This estimate however, can be considerably reduced if labor could be contributed in a bayanihan manner.