

The  
**“LET YOUR HAIR DOWN”**  
 Column

**W**E introduce, in this issue of the *Journal*, a new department, “Chamber Business”, edited by the new Executive Vice-President of the Chamber, Mr. Stanley N. Fisher. We believe that per-

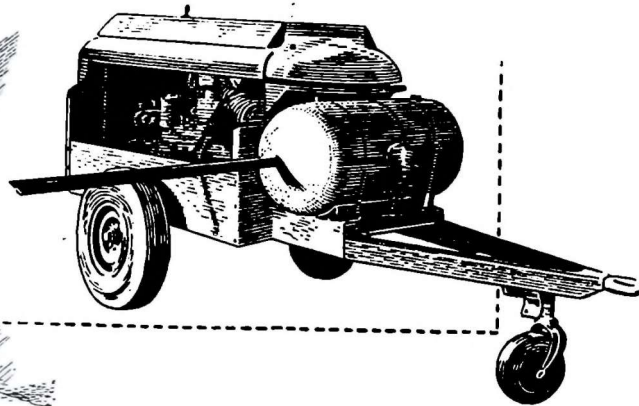
haps our readers generally, and certainly the members of our Chamber, will be interested in being more fully informed of the actual work of the Chamber from month to month than most of them, not actually

members of the Board or of the various standing and special committees, have been so far. The editor says that he has wanted such a department from the first but was never, until now, able to make the necessary arrangements for the preparation of what is called in journalistic, “the copy”. It had to be a “department”, he says, and could not be the whole *Journal* because, though the *Journal* is the official organ of the Chamber, it is intended to be more than simply a “house organ” but a publication of general circulation in the Philippine business and economic field. A very satisfactory arrangement has now been made for the editing of this special department by Mr. Fisher, who, as Executive Vice-President, is always fully conversant with all the facts as to the multifarious activities of the Chamber.

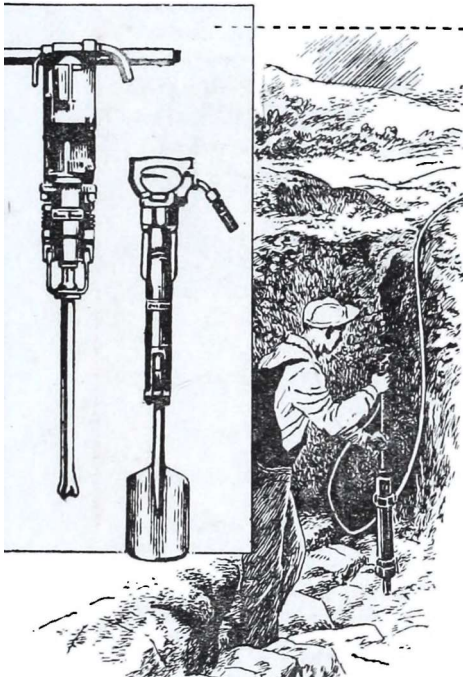
In the *Journal* “make-up”, the new “Chamber Business” department will be distinct from, but will regularly follow the “Business View” department and its twenty or so columns edited by Manila businessmen.

We all look forward to what we believe will be an informative and valuable new *Journal* department.

An Unbeatable Combination...  
**WORTHINGTON'S PORTABLE  
 AIR COMPRESSORS**



and  
**PNEUMATIC TOOLS**

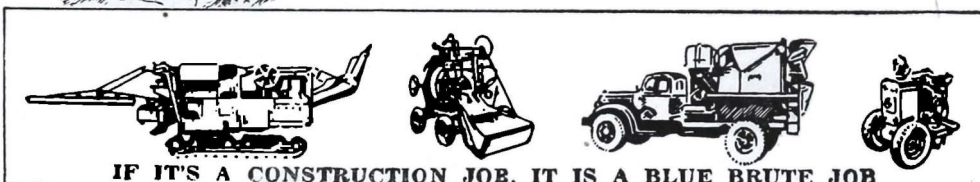


Famous Worthington Blue Brute Air Compressors, teamed with the world's most modern line of tools, give you an unbeatable combination.

No matter what the job is — drilling, demolition, ditching, tamping — Worthington's matched compressors and tools will set production records for you — and keep your operation costs amazingly low!

Consult us regarding the size and type of Worthington air compressors and tools you need.

**WORTHINGTON**



IF IT'S A CONSTRUCTION JOB, IT IS A BLUE BRUTE JOB

Exclusive Philippine Distributor

**THE EDWARD J. NELL CO.**

Anda corner Arzobispo & Sta. Lucia, Intramuros, Manila  
 P. O. Box 612 Tel. 3-21-21

**NEUSS, HESSLEIN CO., INC.**

304 Nueva, Manila

Phone 3-99-71

Cable Address: “NEHESCO”



Foremost Suppliers of Textiles in the Philippines for 54 Years



- |                       |                      |
|-----------------------|----------------------|
| MILLONARIO SHARKSKIN  | MILLONARIO GABARDINE |
| WALDORF PERCALES      | AGUILA DENIMS        |
| FAUST STRIPED DENIM   | CARABELA CHAMBRAY    |
| COMMANDER BROADCLOTHS | SEINE TWINE & YARNS  |



Suppliers of all Articles for Clothing, Shirt and Umbrella Factories

THE following letter was received by the editor from Mr. S. Garmezzy, former official of the Atlantic, Gulf & Pacific Company of Manila and also a former Director of the Chamber, now in New York City:

"On June 7, 1954, the Peoples Bank and Trust Company paid the American Chamber of Commerce of the Philippines P30.00 for an extension of my subscription to the American Chamber of Commerce Journal for 3 years, beginning with the May, 1954, number; that is, to May, 1957. The last number I received was May, 1954, and none since then. Will you please look into the matter? I shall appreciate receiving all the back numbers, beginning with the June, 1954, issue and all future issues until May, 1957. The magazine is so good, under your efficient management, that I miss not receiving it. My best wishes to you, and I hope you keep up the good work. Sincerely, etc."

As we have said before in similar cases, the Journal is mailed to subscribers every month, the addresses on the wrappers being printed by an automatic addressograph machine, the "stencils" being kept in order in a set of drawers. It is practically impossible that any subscriber's stencil could be dropped out. Mr. Garmezzy's stencil was found in the proper place, the 3-year extension of the subscription having been duly noted. The only explanation seems to be that the missing copies were lost in the mail, although it is al-

most unbelievable that this could happen to the same subscriber four or five months in succession. However, we get quite a number of such complaints, mainly from subscribers outside the Philippines. Copies sent to the ECAFE headquarters in Bangkok, for instance, are being "lost" almost regularly, although there is also a certain university library in Manila that has the same trouble. All we can do is to suggest that when any subscriber fails to receive his regular copy of the month, he inform us immediately instead of waiting several months, in which case we would send him another copy right away. We express our

regrets to Mr. Garmezzy and thank him for his kind words about the Journal.

THE editor had a letter recently from Mr. E. D. Hester, now Associate Director (with Dr. Fred Eggan) of the "Philippine Studies Program", University of Chicago, in which he referred both to the Journal and the editor's pre-war Philippine Magazine as follows:

"...We have about ten graduate students at work under Bob Fox. It would do your heart good to watch them reading our broken set of the Philippine Magazine. Que lastima que no se publica ahora. My set of the Journal which I have carefully kept... has also been of great use. We will have

**EVERETT STEAMSHIP CORPORATION**  
 Owners-Brokers-Agents  
 Manila  
 155 Juan Luna St., Tel. 2-79-31  
 General Agencies  
**AMERICAN MAIL LINE**  
 To and From  
 Portland            Seattle  
 Vancouver        Tacoma  
 Japan                Philippines  
 Straits             Indonesia  
**PACIFIC TRANSPORT LINES**  
 To and From  
 California-Japan-Philippines  
**BARBER-FERN-VILLE LINES**  
 To U.S. Atlantic  
 Via Straits, Suez, Mediterranean  
**FERN-VILLE FAR EAST LINES**  
 To and From  
 North Atlantic Ports  
 Gulf Ports-Philippines  
 Via Panama  
**MESSAGERIES MARITIMES**  
 To and From  
 Europe and Mediterranean Ports  
**EVERETT ORIENT LINE**  
 Between  
 Philippines, China, Japan  
 Korea, Straits, and India Ports  
**EVERETT STAR LINE**  
 Between  
 Japan, China, Straits, India,  
 and Persian Gulf Ports  
**PHILIPPINE STEAM NAVIGATION CO.**  
 Serving the Philippine Islands  
**UNITED STATES SALVAGE ASSOCIATION**  
**UNITAS OSLO**  
**THAI AIRWAYS**  
 To and From  
 Bangkok, Singora, Singapore  
 Hongkong, Taipeh, Okinawa, and Japan

**For smoother, faster cutting...**





**● CIRCULAR SAWS**  
 Simonds Inserted Tooth Saws are available in the most popular styles, while solid tooth saws come in tooth styles for ripping, cutting off, or combination work in all standard styles.



To increase production and cut lumber smoother and faster at the lowest possible cost, equip your machines with SIMONDS Cutting Tools. All made of steel from SIMONDS' own mill and expertly fitted, scientifically heat-treated and precision-ground to do your cutting job better.



**● SAW BITS & SHANKS**  
 Combination of precision-made "Blue Tip" bits and scientifically-tempered "Red Circle" shanks makes any saw cut better.





WRITE OR PHONE FOR DETAILED INFORMATION.

*Exclusive Distributors:*

**THE EARNSHAW DOCKS & HONOLULU IRON WORKS**  
 Main Office: Cor. TACOMA & 2nd Sts., PORT. AREA MANILA      •      TEL. 3-35-41  
 Branch Offices at:      BACOLOD CITY      •      CEBU CITY      •      P. O. BOX 292



many citations from its volumes since 1949. Your trade figures for 1953 in the May, 1954, issue are the best we have. We would like a breakdown of the ₱115,000,000 lumped under 'Other imports', with particular reference to foodstuffs included in this figure, if any. . ."

The editor says he will try to get this information from the Bureau of the Census and Statistics.

**Chamber Business . . .**

*(Continued from page 342)*

Dealt with at the October meeting of the Board of Directors were the following: (1) Acceptance, with regret, of the resignation of Mr. S. W. G. Lehman, Board Member and Counselor of the Chamber's Committee on Bell Trade Revision. Mr. Lehman, whose resignation was occasioned by his transfer from the Standard-Vacuum Oil Company General Managership in Manila to a new assignment in Australia, will be succeeded on the Chamber Board by Mr.

Merle S. Robie of the Columbian Rope Company, in accordance with the custom of filling vacancies by selecting the next highest name on the ballot at the last annual meeting. (2) The resignation of Mr. Lee B. Nestle from the Chairmanship of the Foreign & Domestic Trade Controls Committee was accepted with regret; the Vice-Chairman, Mr. Newland Baldwin, was appointed to succeed him. (3) Guests of the Board at this meeting were Mr. William A. Carr and Mr. William M. Thaler, officers of the American Chamber of Commerce in Japan, who were in Manila on behalf of their respective companies—The Insurance Company of North America and Omni Products, Inc. (4) Applications for membership were approved for American Steamship Agencies, Inc., and Reynolds Philippine Corporation, active members, and Mr. Harold A. Linn, associate member. Note

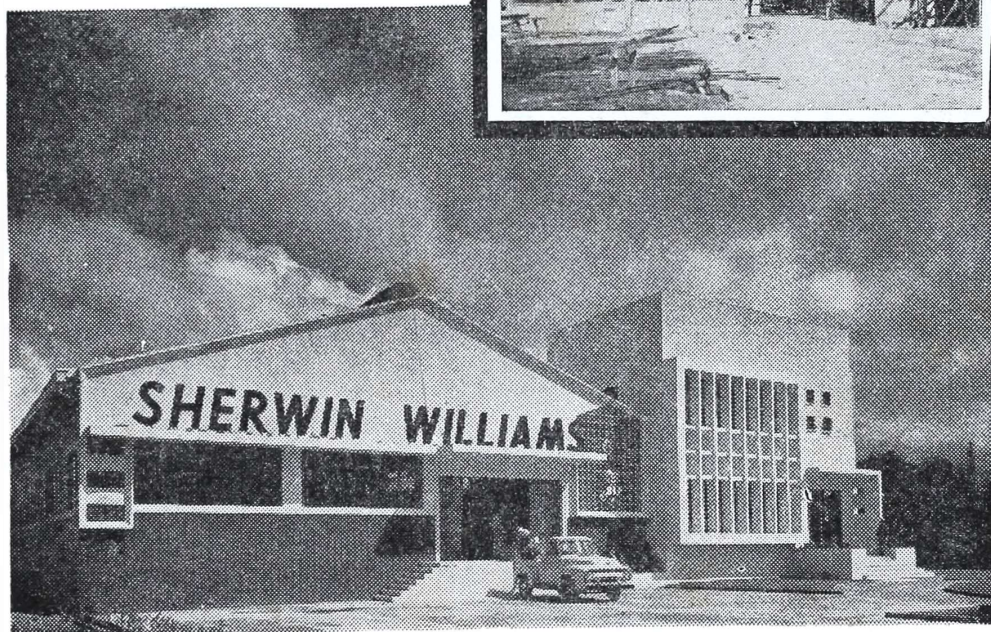
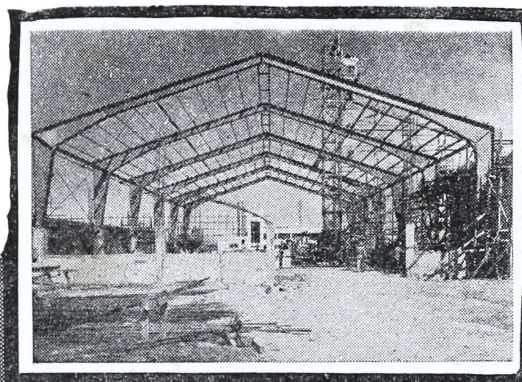
should be made that following the Board of Directors meeting this month, the Membership Committee held the seventh meeting of the year at which time plans were discussed for closing the membership drive at the end of November. Since the Committee's last meeting, Mr. Frank H. Bertell has succeeded Mr. William J. Dunn as Chairman.

**M**R. Paul R. Parrette, President of the Chamber, who has been absent in the United States for the past two months, returned to Manila on November 9. The November meeting of the Board of Directors was, accordingly postponed from Monday, November 8, to Monday, November 15, and matters of interest discussed at this meeting (including the appointment of a Nominating Committee for next January's Board elections) will be reported upon next month.

**NOT JUST SKIN-DEEP BEAUTY —**

**STEEL**

provides the sinews of this modern building!



The new Sherwin-Williams building in Makati. It has a 70' rigid steel span. Structural steel parts were fabricated and erected by A.G.&P.

The strength, permanence, adaptability and ease of installation that only structural steel can offer are drawing more and more favor from architects, engineers, contractors and proprietors alike. There are other advantages—protection against fire, earthquake and storm, low maintenance cost, slow depreciation, low insurance rate—which when considered altogether more than justify the cost.

*you can depend on ...AG&P*

All the structural steel parts used in the new S-W building were fabricated in the AG&P shops . . . in the Philippines. Hauled to the building site by heavy trucks, they were installed in fast time by AG&P's famed structural "steel men."

"Know-How" Backed by Experience Since 1905

**ATLANTIC, GULF & PACIFIC CO. OF MANILA**

Executive Offices—Engineering Division  
Structural & Machine Shops  
Barrio Puntua, Sta. Ana Manila  
Tel. 6-75-31 (connecting all depts.)

Merchandise Sales Division  
Robert Dollar Building  
Port Area Manila  
Tel. 3-36-61 (connecting all depts.)

*Advertisements in this JOURNAL are read by the leading business executives of the country*

**• DUMP YOUR TRAVEL WORRIES OVERBOARD!**

for carefree travel at its best . . . consult



"Your travel agent in the Orient"

• TRAVEL COUNSELORS •  
BOOKING AGENTS for all airlines  
217 Dasmarinas, Manila • Tel. 2-69-56