

Supply Center's Role In the Government's Schoolbuilding Project

By Alfredo C. Garcia

Since population explosion caught up with the Philippines, the country has always been faced with a shortage of schoolrooms and the problem of turning away thousands of students for lack of accommodation.

When President Marcos took over the helm of the government, he gave this problem the highest priority with the launching of a massive infrastructure program involving a bridge-and-road building project and the mass construction of schoolbuildings. To accelerate the construction of these schoolrooms, the Chief Executive tapped the talents and resources of the Armed Forces of the Philippines to join hands with the civilian workers.

One of the governmental agencies given the task of manufacturing the prefabricated type of school houses was the AFP Supply Center which has since embarked on the manufacture and production of some of the items for the armed services.

On February of 1967, a new section was created which was charged with the mass manufacture of the prefabricated school building. Sgt. Andrew C. Macabinta, acting chief of the Manufacturing and Fabrication branch of the DME, was designated supervisor.

The project was started by skilled machinists and mechanics borrowed from other branches. Special devices were designed and manufactured to give impetus to the early completion of the project. Machines also were borrowed.

Development and Progress

As the project gained momentum, more workers were hired. But with the return of the skilled workers to their sections, there was a problem of a drop in quality in the products. This was solved with the hiring of more skilled workers like quality control inspectors and supervisors who trained the new workers. Soon the section not only increased its rate of

production but even came up with an improved quality manufacture.

The initial production goal was 20 units a day on the three structural components: purlins, rafters and columns. The standard working period was soon changed into two shifts and later into three shifts with production continuing round the clock.

To help Macabinta in

the project, Major Fidel Samson, then chief of the control branch became project manager. Mrs. Narcisca O. Santos of the Directorate of Comptrollership was also tapped to help out. As the project kept on expanding, a new building was erected to house separately the Presidential schoolbuilding project. By the end of 1968, the section moved to its

new quarters.

Accomplishments

During the first year of operation, it turned out 2,400 units of the three-room type. With the implementation of the three-shift period, production shot up and doubled to 5,400 units at the end of the year.

The section, after meeting the needs for schoolhouses of the country, soon branched out to other projects.

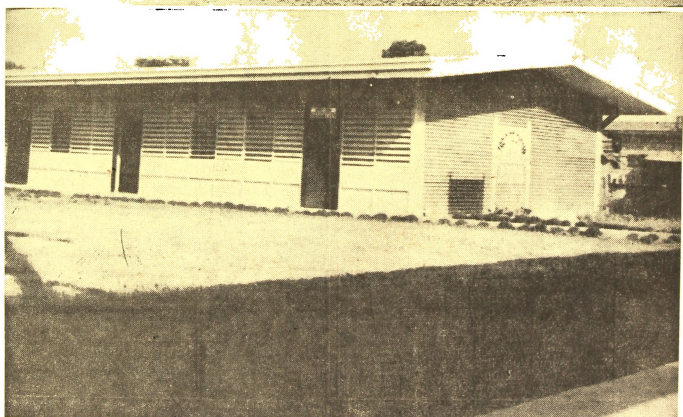
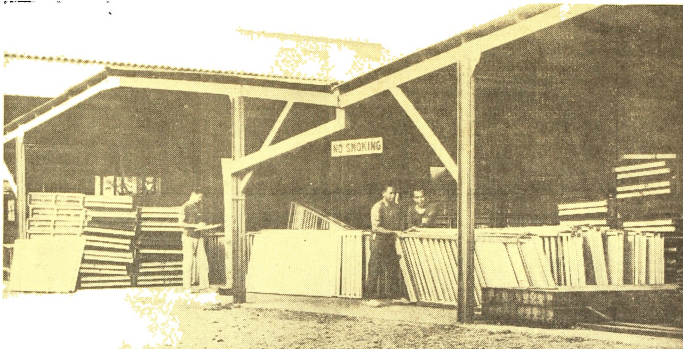
Additional Projects

Fresh from their triumphs in the mass production of prefabricated schoolhouses, the section went on to tackle the housing problem of the AFP. They came up with the production of the "troop hutment" which was patterned after the Marcos-type schoolhouses.

In its first year of production, the section finished 112 units in addition to another 1,092 units of the Marcos pre-

fab schoolhouses. Several extension sheds were built within the compound with another sidewalk shed, also constructed. The pavement from the gate to its shops was also cemented. At the same time, twelve jobs involving the straightening of dented components, conversion work and repairs of the Reparacons (Z-type) schoolhouses were accomplished. The section soon built a training center building. The AFP's general headquarters golf club had one of the sheds repaired by the Section. To meet the recreational needs of its employes, a recreation building was built.

The section has proven equal to the task of providing a schoolroom for every province, town or barrio in need. With the Section geared for the challenges of the coming decade, the Section expects to equal if not surpass its accomplishments this year.



AFPSC Comes Up with the 'Troop Hutment'

One of the latest to come out of the AFP Supply Center is the portable "troop hutment," made of galvanized iron, aluminum and lumber. This modern military billet is expected to be the standard barracks of AFP military personnel. Workers (top photo) sort out materials prior to construction.