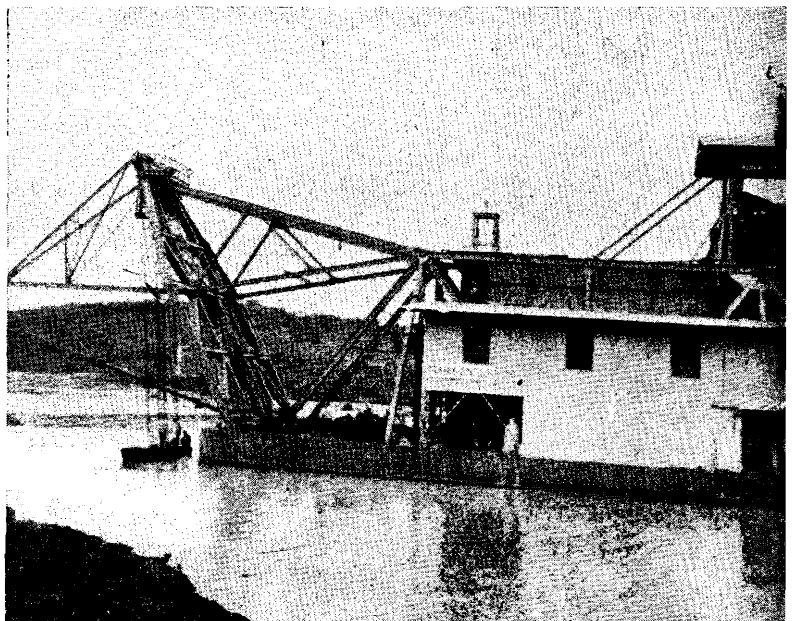
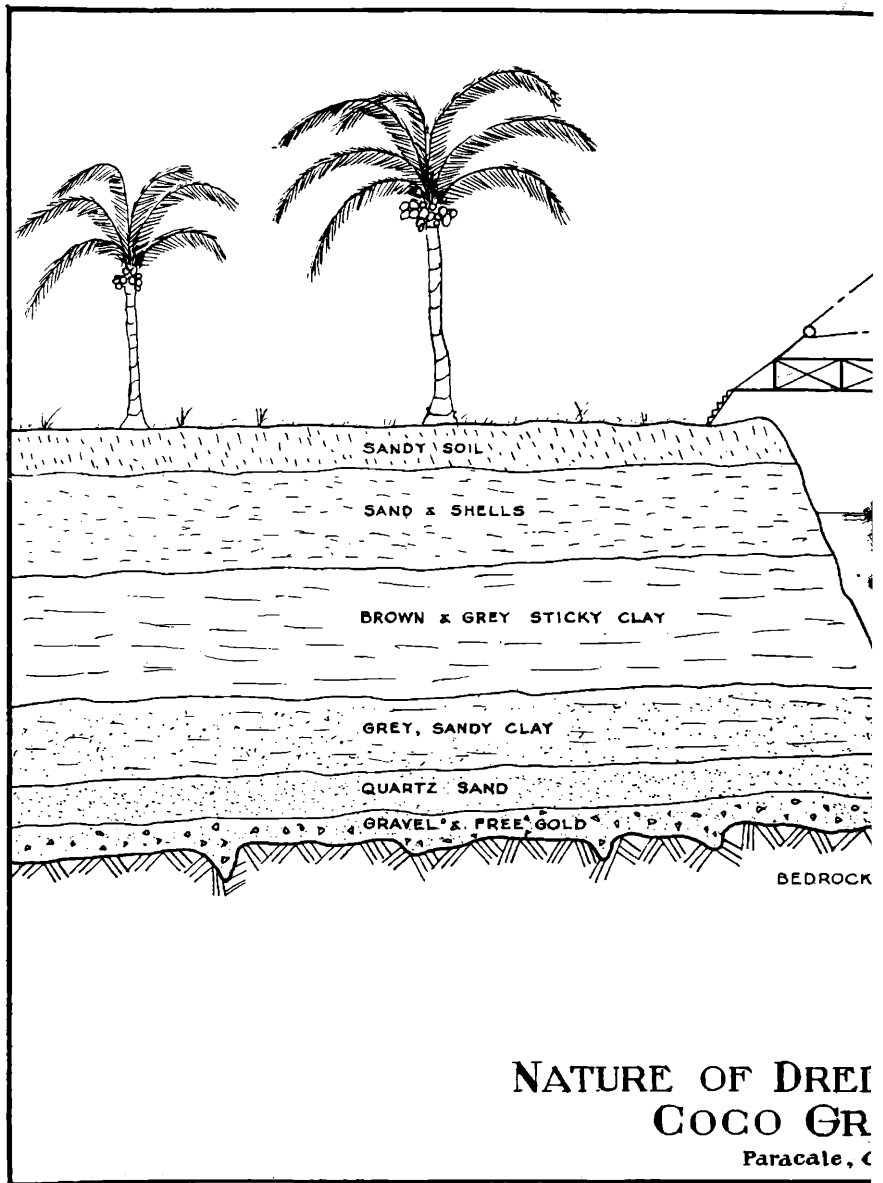
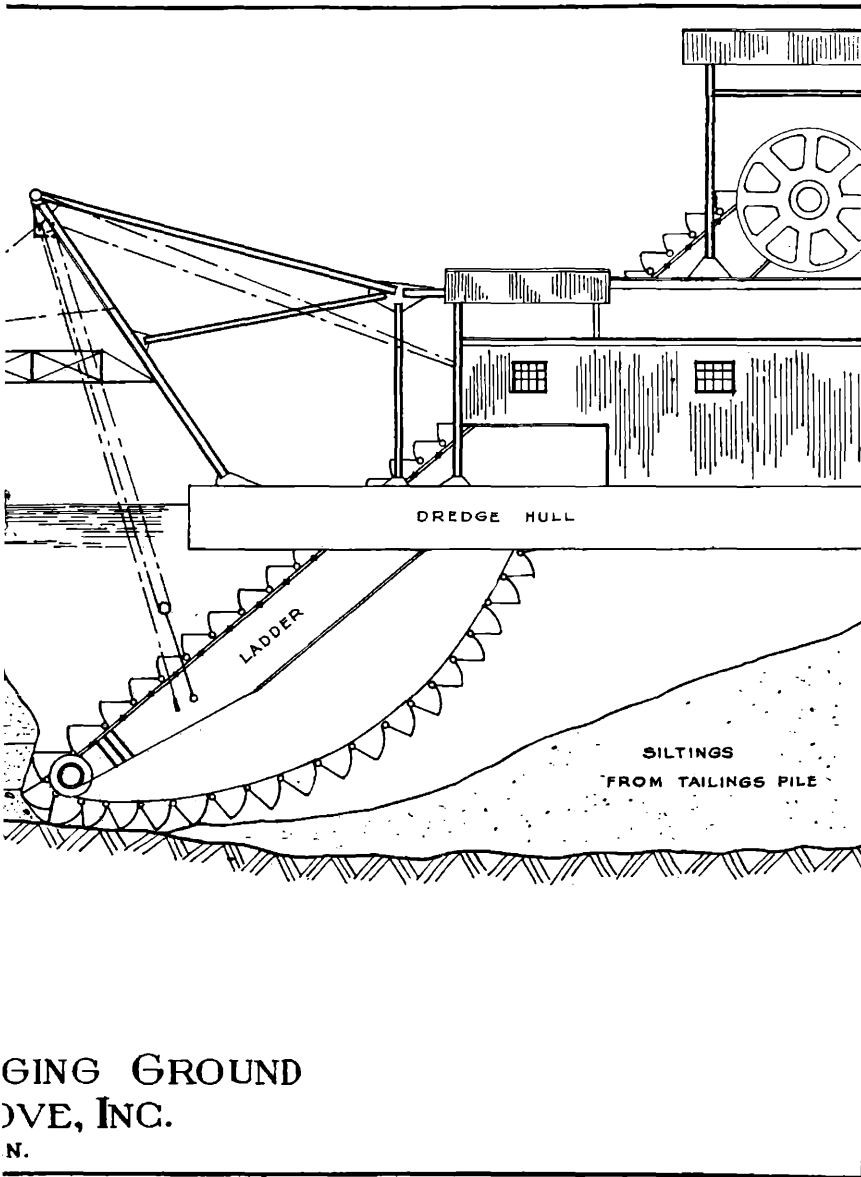


Gold Dredging At Coco Grove

This cross section shows how the two dredgers, "Mary Angus" and "Anne Petronella" dig through layers of non-productive material to reach the narrow section of gravel containing free gold. The size of the dredge hull is considerably larger in proportion than shown here; it was reduced in the drawing so that the bucket ladder could be better shown.





A Modern Floating Placer Plant

The bottom illustration shows the dredger "Mary Angus" in action at Coco Grove. It is in the same position as in the sketch above. The ladder in the back is used to convey the tailings from the gold-saving plant to the pile which is deposited back of the dredge as it progresses.

