

WORKING DRAWING

R. Y. MENDOZA

Supervisor of Vocational Education, Manila

WORKING DRAWING

PROJECT SHEET I-WD

- I. To draw the third-angle orthographic projection of a TABORET.
- II. Drawing Tools And Materials Needed.

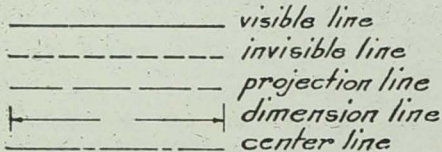
Tools

1. Dividers or Compass
2. T-square
3. 2-H Pencil
4. 30 x 6\$ & 45-degree Triangles
6. Thumbtacks
5. Drawing Board

Materials

1. Sketching Paper
2. Drawing (coupon bond)
26 x 30 cm.

- III. Convention of Lines
- III-A Lettering



These lines are commonly used in industrial or working drawings.

Use inclined single stroke commercial Gothic letters as illustrated below.

A B C D E F G H I J K L M
N O P Q R S T U V W X Y Z
a b c d e f g h i j k l m
n o p q r s t u v w x y z
1 2 3 4 5 6 7 8 9 0

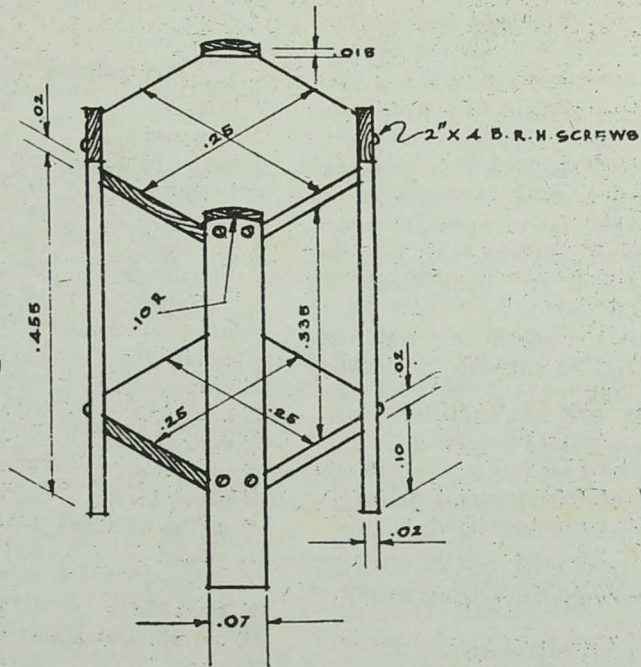
IV. Learning Units in This Project

In making this drawing, you will have an opportunity to develop skills and abilities in the following:

1. Ability to mount paper on the drawing board
2. Ability to use correctly the triangles and T-square
3. Ability to draw horizontal and vertical lines
4. Ability to arrange properly views of an orthographic drawing
5. Ability to use dividers in transferring measurements from the foot-rule or scale to the drawing
6. Ability to read and write metric measurements
7. Ability to letter legibly
8. Ability to draw to scale
9. Knowledge of the conventions of lines
10. Knowledge of the relationship between the working drawing and the object
11. To know the meaning of the scale and third-angle orthographic projection

Note: Below is the pictorial drawing of a taboret from which you are expected to draw the third-angle orthographic projection:

PICTORIAL DRAWING OF A TABORET
SCALE $\phi 1 : .10$ CM.



V. Working Directions

A. Drawing the sketch

1. With the use of a soft pencil, make your sketch of the above project in the orthographic projection.
2. Draw only the top and front views.
3. Indicate all the necessary dimensions and pertinent notes.
4. Check your sketch in accordance with the pictorial drawing above.
5. Practice lettering on your sketch by indicating all the pertinent notes and your name using the style of lettering given in the preceding paragraph.
6. Present your sketch to the teacher for checking. As soon as it is approved, you may start making your regular working drawing of the article mechanically.

B. Making the working drawing mechanically

1. Select the desired size of white paper.
2. Mount this on the drawing board with thumbtacks as demonstrated.
3. Select a convenient scale to suit the size of your paper.

(Continue 1 on page 46)